

RUFFALO NOEL LEVITZ

California State University, Stanislaus

2015 SRP Model

1/15/2016

Forecast *Plus* for
Retention
Tim Culver
Tara Stansberry
Cindy Knuth

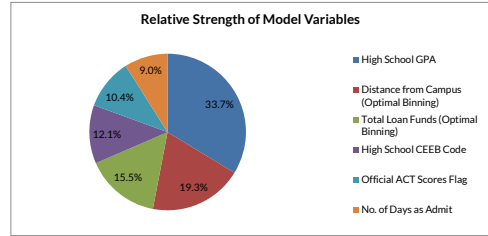
Proprietary & Confidential

www.RuffaloNL.com

©Copyright Ruffalo Noel Levitz

Model Variables

Variable	Description	Coefficient	Std Err	t-Stat	p-Value	Strength
Intercept		-16.48329	2.0706895	-7.960	0.000	
R091	High School GPA	1.1236351	0.1485379	7.565	0.000	33.7%
XOPT_R230	Distance from Campus (Optimal Binning)	6.0116736	1.3867233	4.335	0.000	19.3%
XOPT_R175	Total Loan Funds (Optimal Binning)	4.027455	1.1572465	3.480	0.001	15.5%
XR086	High School CEEB Code	2.2250784	0.8194177	2.715	0.007	12.1%
F100	Official ACT Scores Flag	0.2992314	0.1279835	2.338	0.020	10.4%
XPCTL_R234	No. of Days as Admit	4.48539	2.2184962	2.022	0.043	9.0%



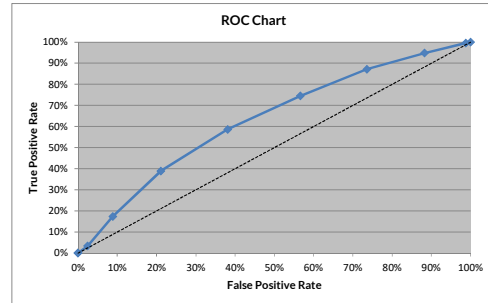
Model Testing Results

Area Measure: 0.308 (0.282, 0.335)

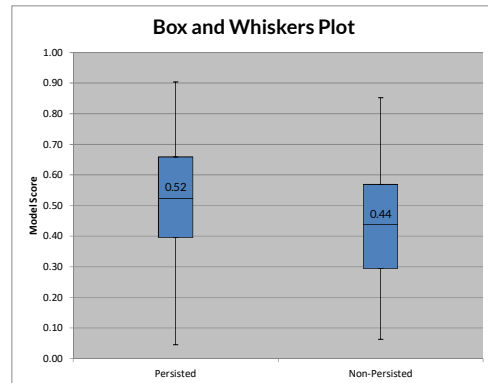
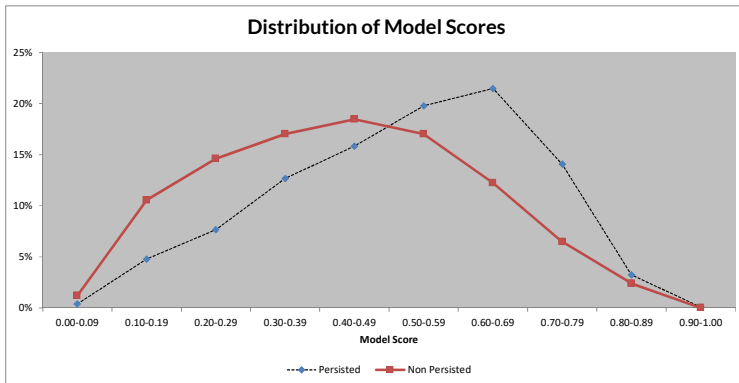
Model Score	Percent Persisted	Percent Non-Persisted	Cum. Percent Persisted	Percent Non-Persisted	Count Persisted	Count Non-Persisted	Persistence Rate	Lift	
0.00-0.09	0.4%	1.2%	0.4%	1.2%	5	5	50.0%	0.66	
0.10-0.19	4.8%	10.6%	5.2%	11.8%	62	44	58.5%	0.77	
0.20-0.29	7.7%	14.6%	12.8%	26.4%	99	61	61.9%	0.82	
0.30-0.39	12.7%	17.0%	25.5%	43.4%	164	71	69.8%	0.92	
0.40-0.49	15.8%	18.5%	41.3%	61.9%	205	77	72.7%	0.96	
0.50-0.59	19.8%	17.0%	61.1%	78.9%	256	71	78.3%	1.04	
0.60-0.69	21.5%	12.2%	82.6%	91.1%	278	51	84.5%	1.12	
0.70-0.79	14.1%	6.5%	96.7%	97.6%	182	27	87.1%	1.15	
0.80-0.89	3.2%	2.4%	99.9%	100.0%	42	10	80.8%	1.07	
0.90-1.00	0.1%	0.0%	100.0%	100.0%	1	0	100.0%	1.32	
Best Score Split: 0.48 (0.619, 0.602)					Total:	1294	417	75.6%	

ROC Analysis

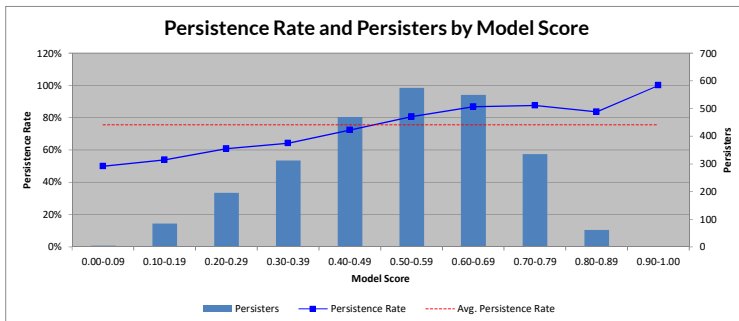
AUC: 0.692 (0.665, 0.718)



Model Score Distribution



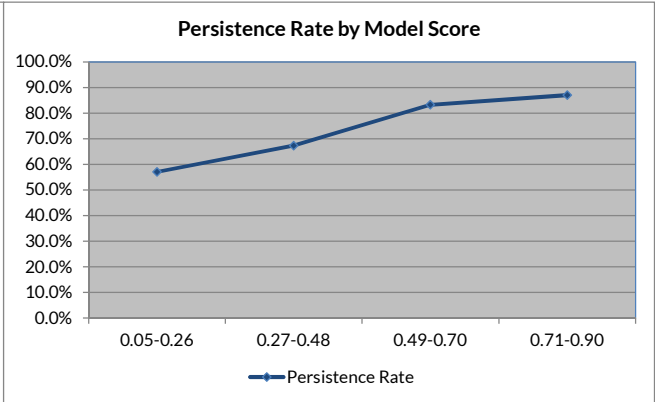
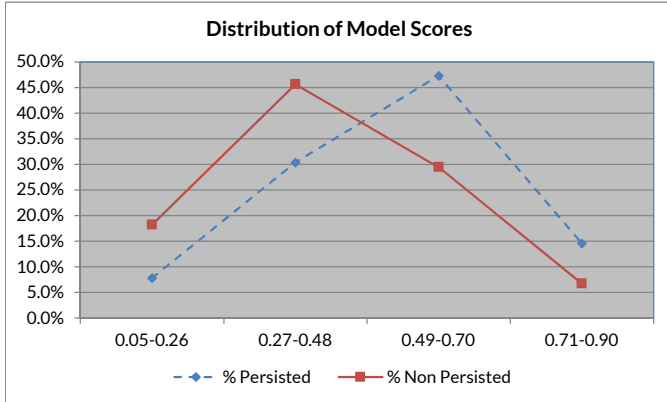
Persistence Rate Analysis



Other Information/Notes

Model Data Years: 2011, 2012, 2013

Model Score	Persist	Non-Persist	% Persisted	% Non Persisted	Persistence Rate	Goals				
						Fall 2015 Count	Predicted Retention	Goal Increase %	Retention Goal	Fall 2016 Outcome
0.05-0.26	202	152	7.8%	18.2%	57.1%	0	0	0.0%	57.1%	0
0.27-0.48	786	381	30.4%	45.6%	67.4%	0	0	0.0%	67.4%	0
0.49-0.70	1224	246	47.3%	29.5%	83.3%	0	0	0.0%	83.3%	0
0.71-0.90	376	56	14.5%	6.7%	87.0%	0	0	0.0%	87.0%	0
						0	0		n/a	0



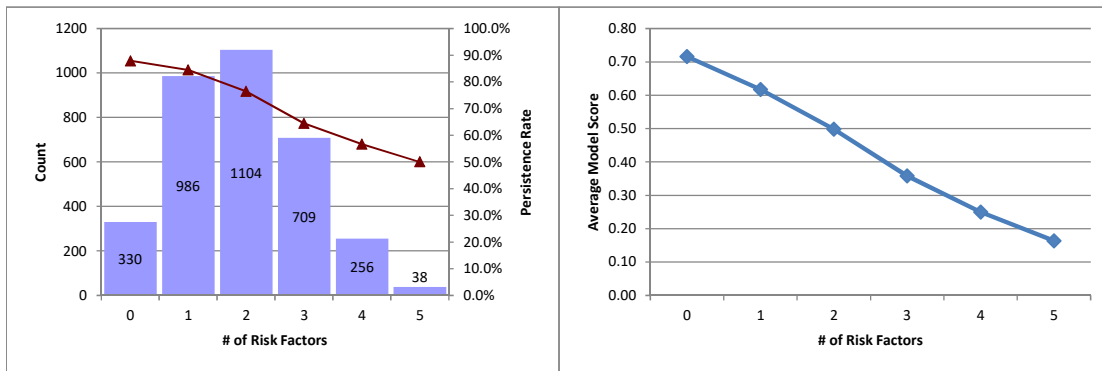
**California State University, Stanislaus
2015 SRP Model - Risk Analysis**

Impact on Persistence by Model Variable

Model Variable	Risk Category	Risk Threshold	# of students at risk for this variable	Persistence Rate of at-risk students
High School GPA	Academic Preparation	Values below 3.04	1131	65.1%
Distance from Campus (Optimal Binning)	Social Integration	Categories with persistence rates below 73.0%	470	62.8%
Total Loan Funds (Optimal Binning)	Financial Needs	Categories with persistence rates below 72.7%	945	66.6%
High School CEEB Code	Institutional	Categories with persistence rates below 75.5%	874	70.7%
Official ACT Scores Flag	Academic Preparation	Values of 0	2270	74.5%
No. of Days as Admit	Educational Aspiration	Categories with persistence rates below 73.8%	845	70.8%

Risk Factor Analysis

# of Risk Factors	Count	# Persist	Persistence Rate	Avg. Model Score
0	330	290	87.9%	0.72
1	986	833	84.5%	0.62
2	1104	844	76.4%	0.50
3	709	457	64.5%	0.36
4	256	145	56.6%	0.25
5	38	19	50.0%	0.16



Model Score	# of Risk Factors						Avg. # of Risk Factors
	0	1	2	3	4	5	
0.00-0.09	0	0	0	1	4	3	4.3
0.10-0.19	0	0	1	46	76	22	3.8
0.20-0.29	0	1	49	152	103	12	3.2
0.30-0.39	0	10	159	248	58	1	2.8
0.40-0.49	1	95	337	188	12	0	2.2
0.50-0.59	22	298	331	59	2	0	1.6
0.60-0.69	113	362	161	14	1	0	1.1
0.70-0.79	135	193	64	1	0	0	0.8
0.80-0.89	57	27	2	0	0	0	0.4
0.90-1.00	2	0	0	0	0	0	0.0

California State University, Stanislaus
2015 SRP Model - Variable Associations

Rank	Variable	Label	Logistic Regression	T-Test	Chi-Square	Strength
1	XR517	Persisted_1st term to 4th term	0.848	0.0000	0.0000	
2	M214	Fail-to-fail GPA - 2nd year	0.781	0.0000	0.0000	
3	M500	Academic Units Completed - 1st year	0.777	0.0000	0.0000	
4	XR500	Academic Units Completed - 1st year	0.777	0.0000	0.0000	
5	M213	Fail-to-spring GPA - 2nd term	0.763	0.0000	0.0000	
6	M215	Academic Units Attempted - 1st year	0.669	0.0000	0.0000	
7	XR516	Persisted_1st term to 2nd term	0.664	0.0000	0.0000	
8	XR215	Academic Units Attempted - 1st year	0.667	0.0000	0.0000	
9	XOPT_R091	High School GPA (Optimal Binning)	0.619	0.0000	0.0000	
10	R091	High School GPA	0.633	0.0000	0.0000	
11	XPCTL_R091	High School GPA	0.629	0.0000	0.0000	
12	XR086	High School CEEB Code	0.594	0.0000	0.0000	
13	XR720	Personix Cluster Code	0.587	0.0000	0.0000	
14	XOPT_R175	Total Loan Funds (Optimal Binning)	0.574	0.0000	0.0000	
15	XR014	Primary Zip Code	0.588	0.0000	0.0000	
16	XPCTL_R175	Total Loan Funds	0.572	0.0000	0.0000	
17	R175	Total Loan Funds	0.574	0.0000	0.0000	
18	XR263	City	0.579	0.0000	0.0000	
19	XPCTL_R230	Distance from Campus	0.569	0.0000	0.0000	
20	XR213	Fail-to-spring GPA - 2nd term	0.561	0.0000	0.0000	
21	XOPT_R230	Distance from Campus (Optimal Binning)	0.548	0.0000	0.0000	
22	XR237	SCF Code	0.556	0.0000	0.0000	
23	XR526	Market Segment	0.561	0.0000	0.0000	
24	XOPT_R234	Days as Admit (Optimal Binning)	0.564	0.0000	0.0000	
25	F502	PACE Flag	0.537	0.0000	0.0000	
26	F230	Distance from Campus Flag	0.544	0.0000	0.0000	
27	R230	Distance from Campus	0.570	0.0000	0.0000	
28	XOPT_R176	Financial Aid Gap (Optimal Binning)	0.555	0.0000	0.0000	
29	XR015	Primary County Code	0.554	0.0000	0.0000	
30	XR062	Academic Major	0.556	0.0000	0.0001	
31	XPCTL_R234	Days as Admit	0.554	0.0000	0.0000	
32	XR524	Major at Admit Stage	0.555	0.0000	0.0002	
33	F029	Non-Resident Flag	0.542	0.0000	0.0000	
34	XR029	Residency Status	0.542	0.0000	0.0000	
35	XOPT_R155	Financial Need (Optimal Binning)	0.544	0.0000	0.0001	
36	XR721	Personix Life Stage Group	0.552	0.0000	0.0004	
37	XPCTL_R155	Financial Need	0.546	0.0000	0.0013	
38	XOPT_R158	Total FA Package (Optimal Binning)	0.536	0.0000	0.0001	
39	R262	Student Age	0.538	0.0000	0.0005	
40	XOPT_R233	Days as Applicant (Optimal Binning)	0.526	0.0000	0.0000	
41	XR460	Household Income Level	0.539	0.0000	0.0242	
42	XR515	Ethnicity	0.536	0.0005	0.0099	
43	XOPT_R542	Total Income (Optimal Binning)	0.530	0.0012	0.0031	
44	F312	Student Total Income > 0	0.531	0.0020	0.0061	
45	XPCTL_R176	Financial Aid Gap	0.534	0.0013	0.0183	
46	R536	Placement Math	0.533	0.0216	0.0004	
47	R234	Days as Admit	0.525	0.0005	0.0054	
48	XPCTL_R111	SAT Combined Score	0.533	0.0021	0.0150	
49	XOPT_R111	SAT Combined Score (Optimal Binning)	0.528	0.0007	0.0109	
50	XPCTL_R233	Days as Applicant	0.530	0.0037	0.0277	
51	R155	Financial Need	0.531	0.0211	0.0061	
52	R542	Total Income	0.528	0.0163	0.0410	
53	XR024	Entry Term	0.526	0.0146	0.0419	
54	R233	Days as Applicant	0.523	0.0229	0.0368	
55	R110	SAT Writing Score	0.533	0.0007	0.0566	
56	XPCTL_R158	Total FA Package	0.529	0.0052	0.0546	
57	XR211	TRIO flag (SSS)	0.509	0.0001	0.0029	
58	R109	SAT Math Score	0.528	0.0060	0.1141	
59	R111	SAT Combined Score	0.527	0.0023	0.1695	
60	XR013	Primary State of Student	0.525	0.0675	0.0168	
61	XPCTL_R542	Total Income	0.525	0.0121	0.1042	
62	R176	Financial Aid Gap	0.526	0.0669	0.0375	
63	XR023	High School Graduation Year	0.524	0.0204	0.0965	
64	XR521	Admit Type	0.513	0.0188	0.0236	
65	F100	Official ACT Scores Flag	0.520	0.0308	0.0334	
66	XR504	Service Learning 1st year	0.518	0.0313	0.0360	
67	R158	Total FA Package	0.524	0.0442	0.0990	
68	XOPT_R536	Placement Math (Optimal Binning)	0.471	0.0157	0.0016	
69	XPCTL_R461	Avg. Household Income	0.524	0.0233	0.1356	
70	R108	SAT Critical Reading Score	0.523	0.0062	0.2243	
71	XR044	Subdivision or College	0.523	0.0234	0.1179	
72	XPCTL_R536	Placement Math	0.522	0.0153	0.2075	
73	F313	Independent Status Flag	0.511	0.0054	0.1533	
74	R102	ACT Math Score	0.518	0.0080	0.2637	
75	R537	Placement English	0.517	0.5112	0.0077	
76	F311	EFC > 0 Flag	0.519	0.0648	0.1549	
77	F036	Gender Flag	0.517	0.0836	0.0800	
78	XR503	FMP flag	0.508	0.0794	0.0571	
79	XPCTL_R541	Parent income	0.521	0.1786	0.1883	
80	XR501	EOP flags	0.509	0.1185	0.1026	
81	XPCTL_R106	ACT Composite Score	0.512	0.0803	0.2057	
82	XPCTL_R173	Total Gift Funds	0.518	0.1013	0.3762	
83	F107	Official SAT Scores Flag	0.510	0.1664	0.1552	
84	R156	Percent of Need Met	0.517	0.1341	0.5712	
85	F515	Race Flag	0.512	0.2287	0.2277	
86	XPCTL_R156	Percent of Need Met	0.514	0.1756	0.5548	
87	XR514	Flag Hispanic	0.512	0.2287	0.2277	
88	R106	ACT Composite Score	0.509	0.2743	0.1813	
89	XR533	Flag Pell Eligible	0.513	0.2385	0.3119	
90	R104	ACT Science Score	0.513	0.3940	0.2440	
91	XR527	Flag Athlete	0.507	0.1586	0.5353	
92	XR212	Honors Scholarship flag	0.504	0.2234	0.2540	
93	R103	ACT Reading Score	0.500	0.6050	0.1345	
94	R101	ACT English Score	0.494	0.8344	0.1015	
95	R461	Avg. Household Income	0.507	0.7141	0.2095	
96	XR532	FAFSA Position	0.508	0.1917	0.8790	
97	R541	Parent income	0.504	0.3490	0.3494	
98	XR529	Flag First Generation	0.505	0.3088	0.6238	
99	R261	Years since HS Graduation	0.502	0.4385	0.3792	
100	R173	Total Gift Funds	0.506	0.8326	0.4543	
101	F299	In-State Eligibility	0.501	0.6880	0.6735	
102	F034	FAFSA Received Flag	0.501	0.9182	0.9184	

Stronger

Weaker

Insignificant

**California State University, Stanislaus
Persisted 1st term to 4th term**

Rank	Value	Total Number	Number Persisted	Persistence Rate (%)	Lift
1	Y	2791	2550	91.37	1.21
2	N	632	38	6.01	0.08
Total		3423	2588	75.61	1.00

**California State University, Stanislaus
Fall-to-fall GPA - 2nd year (Equal Bins)**

Rank	Value	Total Number	Number Persisted	Persistence Rate (%)	Lift
1	2.89 to 3.32	857	760	88.68	1.17
2	3.33 or Greater	853	751	88.04	1.16
3	2.39 to 2.88	855	725	84.80	1.12
4	2.38 or Less	858	352	41.03	0.54
Total		3423	2588	75.61	1.00

**California State University, Stanislaus
Academic Units Completed - 1st year (Equal Bins)**

Rank	Value	Total Number	Number Persisted	Persistence Rate (%)	Lift
1	26.1 or Greater	742	667	89.89	1.19
2	23.1 to 26.0	855	756	88.42	1.17
3	18.1 to 23.0	937	776	82.82	1.10
4	18.0 or Less	889	389	43.76	0.58
Total		3423	2588	75.61	1.00

**California State University, Stanislaus
Academic Units Completed - 1st year**

Rank	Value	Total Number	Number Persisted	Persistence Rate (%)	Lift
1	34	3	3	100.00	1.32
2	36	3	3	100.00	1.32
3	37	1	1	100.00	1.32
4	32	27	26	96.30	1.27
5	29	115	105	91.30	1.21
6	28	162	147	90.74	1.20
7	27	249	224	89.96	1.19
8	26	238	214	89.92	1.19
9	24	310	278	89.68	1.19
10	31	48	43	89.58	1.18
11	30	109	95	87.16	1.15
12	25	307	264	85.99	1.14
13	23	163	140	85.89	1.14
14	22	266	224	84.21	1.11
15	33	18	15	83.33	1.10
16	21	235	195	82.98	1.10
17	19	175	143	81.71	1.08
18	20	98	74	75.51	1.00
19	18	198	144	72.73	0.96
20	35	7	5	71.43	0.94
21	16	91	56	61.54	0.81
22	17	51	31	60.78	0.80
23	15	122	74	60.66	0.80
24	14	22	12	54.55	0.72
25	13	58	25	43.10	0.57
26	12	93	29	31.18	0.41
27	11	4	1	25.00	0.33
28	9	78	14	17.95	0.24
29	10	27	2	7.41	0.10
30	7	18	1	5.56	0.07
31	6	42	0	0.00	0.00
32	0	35	0	0.00	0.00
33	3	33	0	0.00	0.00
34	4	7	0	0.00	0.00
35	1	5	0	0.00	0.00
36	2	2	0	0.00	0.00
37	8	2	0	0.00	0.00
38	5	1	0	0.00	0.00
Total		3423	2588	75.61	1.00

**California State University, Stanislaus
Fall-to-spring GPA - 2nd term (Equal Bins)**

Rank	Value	Total Number	Number Persisted	Persistence Rate (%)	Lift
1	3.38 or Greater	854	758	88.76	1.17
2	2.97 to 3.37	856	739	86.33	1.14
3	2.43 to 2.96	851	708	83.20	1.10
4	2.42 or Less	862	383	44.43	0.59
Total		3423	2588	75.61	1.00

**California State University, Stanislaus
Academic Units Attempted - 1st year (Equal Bins)**

Rank	Value	Total Number	Number Persisted	Persistence Rate (%)	Lift
1	28.1 or Greater	782	664	84.91	1.12
2	26.1 to 28.0	881	725	82.29	1.09
3	25.1 to 26.0	574	453	78.92	1.04
4	25.0 or Less	1186	746	62.90	0.83
Total		3423	2588	75.61	1.00

**California State University, Stanislaus
Persisted 1st term to 2nd term**

Rank	Value	Total Number	Number Persisted	Persistence Rate (%)	Lift
1	Y	3236	2578	79.67	1.05
2	N	187	10	5.35	0.07
Total		3423	2588	75.61	1.00

**California State University, Stanislaus
Academic Units Attempted - 1st year**

Rank	Value	Total Number	Number Persisted	Persistence Rate (%)	Lift
1	36	5	5	100.00	1.32
2	37	1	1	100.00	1.32
3	42	1	1	100.00	1.32
4	34	15	14	93.33	1.23
5	32	60	54	90.00	1.19
6	33	44	39	88.64	1.17
7	30	226	191	84.51	1.12
8	31	124	104	83.87	1.11
9	29	297	248	83.50	1.10
10	28	368	303	82.34	1.09
11	27	513	422	82.26	1.09
12	26	574	453	78.92	1.04
13	24	303	238	78.55	1.04
14	35	9	7	77.78	1.03
15	25	553	417	75.41	1.00
16	23	48	30	62.50	0.83
17	20	8	5	62.50	0.83
18	22	53	31	58.49	0.77
19	18	4	2	50.00	0.66
20	21	23	11	47.83	0.63
21	19	7	3	42.86	0.57
22	15	10	1	10.00	0.13
23	12	59	4	6.78	0.09
24	13	73	3	4.11	0.05
25	14	27	1	3.70	0.05
26	16	15	0	0.00	0.00
27	17	3	0	0.00	0.00
Total		3423	2588	75.61	1.00

**California State University, Stanislaus
High School GPA (Optimal Binning)**

Rank	Value	Total Number	Number Persisted	Persistence Rate (%)	Lift
1	Higher than 3.265	1676	1410	84.13	1.11
2	2.59 to 3.265	1590	1096	68.93	0.91
3	2.59 and below	139	74	53.24	0.70
4	ZZ	18	8	44.44	0.59
Total		3423	2588	75.61	1.00

Notes:

1. Missing values are found in category "ZZ".

**California State University, Stanislaus
High School GPA (Equal Bins)**

Rank	Value	Total Number	Number Persisted	Persistence Rate (%)	Lift
1	3.58 or Greater	847	732	86.42	1.14
2	3.24 to 3.57	851	693	81.43	1.08
3	2.94 to 3.23	844	599	70.97	0.94
4	2.93 or Less	863	556	64.43	0.85
5	ZZ	18	8	44.44	0.59
Total		3423	2588	75.61	1.00

Notes:

1. Missing values are found in category "ZZ".

**California State University, Stanislaus
High School GPA**

Rank	Value	Total Number	Number Persisted	Persistence Rate (%)	Lift
1	04:3.57-high	854	737	86.30	1.14
2	03:3.23-3.57	855	698	81.64	1.08
3	02:2.93-3.23	856	603	70.44	0.93
4	01:low-2.93	840	542	64.52	0.85
5	ZZ	18	8	44.44	0.59
Total		3423	2588	75.61	1.00

Notes:

1. Missing values are found in category "ZZ".

**California State University, Stanislaus
High School CEEB Code**

Rank	CEEB Code	High School	Total Number	Number Persisted	Persistence Rate (%)	Lift
1	503713	Whitmore Charter High	6	6	100.00	1.32
2	503031	Connecting Waters Charter	5	5	100.00	1.32
3	073779	Heritage High School	4	4	100.00	1.32
4	193374	Granada Hills Senior High	4	4	100.00	1.32
5	199580	Valencia High	4	4	100.00	1.32
6	013084	Arroyo High	3	3	100.00	1.32
7	053250	Bret Harte Union High	3	3	100.00	1.32
8	273016	Everett Alvarez High	3	3	100.00	1.32
9	343482	New Technology High	3	3	100.00	1.32
10	393904	John C Kimball High School	3	3	100.00	1.32
11	433283	Gilroy High	3	3	100.00	1.32
12	483017	Angelo Rodriguez High	3	3	100.00	1.32
13	600027	Nevada	3	3	100.00	1.32
14	013058	Amador Valley High	2	2	100.00	1.32
15	013270	Dublin High	2	2	100.00	1.32
16	103395	Laton High	2	2	100.00	1.32
17	103421	McLane High	2	2	100.00	1.32
18	103531	Reedley High	2	2	100.00	1.32
19	103830	Washington High	2	2	100.00	1.32
20	193291	Middle College High	2	2	100.00	1.32
21	193643	Camino Nuevo High School Charter	2	2	100.00	1.32
22	193686	Gertz-Ressler Academy High	2	2	100.00	1.32
23	313015	Rocklin High	2	2	100.00	1.32
24	333039	Canyon Springs High	2	2	100.00	1.32
25	333042	Vista Murrieta High	2	2	100.00	1.32
26	333101	Nuview Bridge Academy	2	2	100.00	1.32
27	333235	Elsinore High	2	2	100.00	1.32
28	343017	Valley High	2	2	100.00	1.32
29	343087	Franklin High School	2	2	100.00	1.32
30	343347	Galt High	2	2	100.00	1.32
31	343357	Vista del Lago High	2	2	100.00	1.32
32	344804	Christian Brothers High	2	2	100.00	1.32
33	363057	Rancho Cucamonga High	2	2	100.00	1.32
34	363222	Cajon High	2	2	100.00	1.32
35	373586	Poway High	2	2	100.00	1.32
36	393175	Institute of Business Management and Law	2	2	100.00	1.32
37	413281	Half Moon Bay High	2	2	100.00	1.32
38	423228	Pioneer Valley High	2	2	100.00	1.32
39	423461	Righetti (Ernest) High	2	2	100.00	1.32
40	433002	Santa Teresa High	2	2	100.00	1.32
41	433613	Prospect High	2	2	100.00	1.32

**California State University, Stanislaus
High School CEEB Code**

Rank	CEEB Code	High School	Total Number	Number Persisted	Persistence Rate (%)	Lift
42	433880	Wilcox (Adrian) High	2	2	100.00	1.32
43	483014	Bethel (Jesse M.) High	2	2	100.00	1.32
44	503023	Valley Business High	2	2	100.00	1.32
45	513772	River Valley High School	2	2	100.00	1.32
46	543278	Monache High	2	2	100.00	1.32
47	543493	Strathmore High	2	2	100.00	1.32
48	600036	Oregon	2	2	100.00	1.32
49	600046	Washington	2	2	100.00	1.32
50	992999	Home School	2	2	100.00	1.32
51	013006	American High	1	1	100.00	1.32
52	013022	Alameda High	1	1	100.00	1.32
53	013274	Emery Secondary	1	1	100.00	1.32
54	013279	Coliseum College Prep Academy	1	1	100.00	1.32
55	013339	Granada High	1	1	100.00	1.32
56	013794	Skyline High	1	1	100.00	1.32
57	014065	Valley Christian Junior/Senior	1	1	100.00	1.32
58	014294	Holy Names High	1	1	100.00	1.32
59	043560	Oroville High	1	1	100.00	1.32
60	043755	Pleasant Valley High	1	1	100.00	1.32
61	073005	California High	1	1	100.00	1.32
62	073436	Monte Vista High	1	1	100.00	1.32
63	073456	Mt. Diablo High	1	1	100.00	1.32
64	073540	Pittsburg Senior High	1	1	100.00	1.32
65	073702	Swett (John) High	1	1	100.00	1.32
66	073721	Dozier-Libbey Medical High	1	1	100.00	1.32
67	074333	Berean Christian High	1	1	100.00	1.32
68	093008	Oak Ridge High	1	1	100.00	1.32
69	093016	Union Mine High	1	1	100.00	1.32
70	103012	Firebaugh High	1	1	100.00	1.32
71	103050	Buchanan High	1	1	100.00	1.32
72	103080	University High	1	1	100.00	1.32
73	103189	Edison High	1	1	100.00	1.32
74	103215	Fowler High	1	1	100.00	1.32
75	103369	Kingsburg High	1	1	100.00	1.32
76	153025	Arvin High	1	1	100.00	1.32
77	153049	Valley Oaks Charter	1	1	100.00	1.32
78	153136	Burroughs High	1	1	100.00	1.32
79	153613	Tehachapi High	1	1	100.00	1.32
80	153644	Wasco High	1	1	100.00	1.32
81	163016	Hanford West High	1	1	100.00	1.32
82	173435	Kelseyville High	1	1	100.00	1.32

**California State University, Stanislaus
High School CEEB Code**

Rank	CEEB Code	High School	Total Number	Number Persisted	Persistence Rate (%)	Lift
83	183013	Westwood Charter School	1	1	100.00	1.32
84	193016	Alhambra High	1	1	100.00	1.32
85	193052	Azusa High	1	1	100.00	1.32
86	193077	Bellflower High	1	1	100.00	1.32
87	193082	Bell Gardens High	1	1	100.00	1.32
88	193086	Bell Senior High	1	1	100.00	1.32
89	193098	Beverly Hills High	1	1	100.00	1.32
90	193164	Tracy (Wilbur) High (Cont.)	1	1	100.00	1.32
91	193182	Claremont High	1	1	100.00	1.32
92	193208	Covina High	1	1	100.00	1.32
93	193228	Roosevelt HS Law and Govt	1	1	100.00	1.32
94	193238	Dorsey (Susan Miller) Senior H	1	1	100.00	1.32
95	193247	West Ranch High	1	1	100.00	1.32
96	193338	Garfield (James A.) Senior High	1	1	100.00	1.32
97	193339	L.A. County High School for the Arts	1	1	100.00	1.32
98	193385	Hamilton (Alexander) Senior Hi	1	1	100.00	1.32
99	193415	Huntington Park Senior High	1	1	100.00	1.32
100	193486	La Serna High	1	1	100.00	1.32
101	193551	Manual Arts Senior High	1	1	100.00	1.32
102	193561	Mayfair High	1	1	100.00	1.32
103	193586	Monroe (James) High	1	1	100.00	1.32
104	193604	Morningside High	1	1	100.00	1.32
105	193674	Paramount High	1	1	100.00	1.32
106	193699	Orthopaedic Hospital High School	1	1	100.00	1.32
107	193835	South High	1	1	100.00	1.32
108	193875	Torrance High	1	1	100.00	1.32
109	193914	Walnut High	1	1	100.00	1.32
110	193947	Westchester Senior High	1	1	100.00	1.32
111	194042	Bellarmino-Jefferson High	1	1	100.00	1.32
112	194343	Los Angeles Baptist High	1	1	100.00	1.32
113	194413	Bishop Alemany High	1	1	100.00	1.32
114	194589	St. Francis High	1	1	100.00	1.32
115	199008	William J Pete Knight High School	1	1	100.00	1.32
116	199210	Edward R. Roybal Learning Center	1	1	100.00	1.32
117	199558	Palos Verdes Peninsula High	1	1	100.00	1.32
118	199631	Animo Venice Charter High School	1	1	100.00	1.32
119	199655	Palos Verdes High	1	1	100.00	1.32
120	199683	Animo Venice Charter High School	1	1	100.00	1.32
121	199760	Alliance Environmental Science	1	1	100.00	1.32
122	199774	RFK Community Schools-Los Ange	1	1	100.00	1.32
123	199791	New Millennium Secondary	1	1	100.00	1.32

**California State University, Stanislaus
High School CEEB Code**

Rank	CEEB Code	High School	Total Number	Number Persisted	Persistence Rate (%)	Lift
124	199945	South East High	1	1	100.00	1.32
125	199972	Ramon C. Cortines School of Visual & Perf Arts	1	1	100.00	1.32
126	199987	Community Charter Early College High	1	1	100.00	1.32
127	199992	Academia Avance Charter	1	1	100.00	1.32
128	213227	Novato High	1	1	100.00	1.32
129	263300	Coleville High	1	1	100.00	1.32
130	273003	North Monterey County High	1	1	100.00	1.32
131	273217	King City High	1	1	100.00	1.32
132	273455	Salinas High	1	1	100.00	1.32
133	313017	Woodcreek High	1	1	100.00	1.32
134	313245	Del Oro High	1	1	100.00	1.32
135	313808	Whitney High	1	1	100.00	1.32
136	313850	Tahoe Truckee High	1	1	100.00	1.32
137	333002	Arlington High	1	1	100.00	1.32
138	333037	Temecula Valley High	1	1	100.00	1.32
139	333038	Palm Desert High	1	1	100.00	1.32
140	333045	Hamilton High	1	1	100.00	1.32
141	333047	Beaumont Senior High	1	1	100.00	1.32
142	333053	West Valley High	1	1	100.00	1.32
143	333055	Rancho Verde High	1	1	100.00	1.32
144	333062	Eleanor Roosevelt High	1	1	100.00	1.32
145	333072	Paloma Valley High	1	1	100.00	1.32
146	333107	Vista Del Lago High	1	1	100.00	1.32
147	333160	Corona Senior High	1	1	100.00	1.32
148	333597	Perris High	1	1	100.00	1.32
149	333879	Murrieta Mesa High	1	1	100.00	1.32
150	339075	John F. Kennedy High	1	1	100.00	1.32
151	353006	Anzar High	1	1	100.00	1.32
152	363027	Silver Valley High	1	1	100.00	1.32
153	363042	Apple Valley High	1	1	100.00	1.32
154	363059	Rialto High	1	1	100.00	1.32
155	363108	Arroyo Valley High School	1	1	100.00	1.32
156	363220	Chaffey High	1	1	100.00	1.32
157	363274	Colton High	1	1	100.00	1.32
158	363468	Pacific High	1	1	100.00	1.32
159	363504	Redlands Senior High	1	1	100.00	1.32
160	363758	Upland High	1	1	100.00	1.32
161	363911	Oak Hills High	1	1	100.00	1.32
162	373007	Mt. Carmel High	1	1	100.00	1.32
163	373017	Serra Senior High	1	1	100.00	1.32
164	373126	Steele Canyon High	1	1	100.00	1.32

**California State University, Stanislaus
High School CEEB Code**

Rank	CEEB Code	High School	Total Number	Number Persisted	Persistence Rate (%)	Lift
165	373147	Coronado High	1	1	100.00	1.32
166	373152	Westview High	1	1	100.00	1.32
167	373476	Mount Miguel High	1	1	100.00	1.32
168	373531	Orange Glen High	1	1	100.00	1.32
169	373790	Santana High	1	1	100.00	1.32
170	374700	Tri-City Christian Schools	1	1	100.00	1.32
171	374916	Marian Catholic High	1	1	100.00	1.32
172	383043	Gateway High	1	1	100.00	1.32
173	384974	Sacred Heart Cathedral Prepara	1	1	100.00	1.32
174	393042	Weber Institute for Applied Sciences and Tech	1	1	100.00	1.32
175	394885	Jim Elliot Christian High	1	1	100.00	1.32
176	413047	Burlingame High	1	1	100.00	1.32
177	413255	El Camino High	1	1	100.00	1.32
178	413805	Woodside High	1	1	100.00	1.32
179	423045	Cabrillo High	1	1	100.00	1.32
180	423172	Dos Pueblos Senior High	1	1	100.00	1.32
181	433008	Gunderson High	1	1	100.00	1.32
182	433179	Cupertino High	1	1	100.00	1.32
183	433291	Leadership Public Schools - San Jose	1	1	100.00	1.32
184	433379	Lincoln (Abraham) High	1	1	100.00	1.32
185	433395	Live Oak High	1	1	100.00	1.32
186	433449	Dr. TJ Ownes Gilroy Early College Academy	1	1	100.00	1.32
187	433490	Mt. Pleasant High	1	1	100.00	1.32
188	433542	Overfelt (William C.) High	1	1	100.00	1.32
189	433590	Piedmont Hills High	1	1	100.00	1.32
190	434034	Archbishop Mitty High	1	1	100.00	1.32
191	443051	Aptos High	1	1	100.00	1.32
192	443234	Harbor High	1	1	100.00	1.32
193	463425	Loyalton High	1	1	100.00	1.32
194	473125	Butte Valley High	1	1	100.00	1.32
195	483100	Benicia High	1	1	100.00	1.32
196	493255	Healdsburg High	1	1	100.00	1.32
197	493680	Santa Rosa High	1	1	100.00	1.32
198	503017	Oakdale Home Study Charter	1	1	100.00	1.32
199	504212	Tooman Christian Academy	1	1	100.00	1.32
200	513525	Live Oak High	1	1	100.00	1.32
201	513750	Sutter High	1	1	100.00	1.32
202	543004	Golden West High	1	1	100.00	1.32
203	543452	Redwood High	1	1	100.00	1.32
204	543960	University Preparatory High	1	1	100.00	1.32
205	563013	Oak Park High	1	1	100.00	1.32

**California State University, Stanislaus
High School CEEB Code**

Rank	CEEB Code	High School	Total Number	Number Persisted	Persistence Rate (%)	Lift
206	573515	River City Senior High	1	1	100.00	1.32
207	583520	Marysville High	1	1	100.00	1.32
208	600008	Palm Beach Lakes Community Hs	1	1	100.00	1.32
209	600031	New York	1	1	100.00	1.32
210	600041	Tennessee	1	1	100.00	1.32
211	393230	Escalon High	26	24	92.31	1.22
212	243120	Dos Palos High	24	22	91.67	1.21
213	393800	Tracy High	22	20	90.91	1.20
214	053150	Calaveras High	10	9	90.00	1.19
215	243300	Le Grand High	19	17	89.47	1.18
216	503087	Ceres High	91	80	87.91	1.16
217	243240	Hilmar High	48	42	87.50	1.16
218	249092	Pacheco High	8	7	87.50	1.16
219	503685	Riverbank High	39	34	87.18	1.15
220	503138	Grace M. Davis High	91	79	86.81	1.15
221	503265	Hughson High	57	49	85.96	1.14
222	243520	Merced High	46	39	84.78	1.12
223	503770	Turlock High	151	127	84.11	1.11
224	393815	Cesar Chavez High	24	20	83.33	1.10
225	033075	Amador County High	6	5	83.33	1.10
226	243360	Livingston High	119	98	82.35	1.09
227	503028	John H. Pitman High	220	181	82.27	1.09
228	503013	Johansen (Peter) High	105	86	81.90	1.08
229	503025	Waterford High	44	36	81.82	1.08
230	504262	Turlock Christian Junior/Senio	27	22	81.48	1.08
231	393575	Ripon High	37	30	81.08	1.07
232	503590	Orestimba High	46	37	80.43	1.06
233	393200	East Union High	30	24	80.00	1.06
234	203235	Chowchilla High	20	16	80.00	1.06
235	393030	West (Merrill F.) High	15	12	80.00	1.06
236	394992	St. Marys High	15	12	80.00	1.06
237	393380	Lincoln High	10	8	80.00	1.06
238	333070	Santiago High	5	4	80.00	1.06
239	393740	Stagg Senior High	5	4	80.00	1.06
240	243011	Delhi High	110	87	79.09	1.05
241	504516	Modesto Christian	19	15	78.95	1.04
242	353700	San Benito High	14	11	78.57	1.04
243	503059	James C. Enochs High School	149	117	78.52	1.04
244	394552	Ripon Christian	9	7	77.78	1.03
245	243009	Golden Valley High	49	38	77.55	1.03
246	393031	Sierra High	35	27	77.14	1.02

**California State University, Stanislaus
High School CEEB Code**

Rank	CEEB Code	High School	Total Number	Number Persisted	Persistence Rate (%)	Lift
247	503180	Thomas Downey High	62	47	75.81	1.00
248	503152	Denair High	28	21	75.00	0.99
249	543546	Tulare Western High	8	6	75.00	0.99
250	273317	North Salinas High	4	3	75.00	0.99
251	363850	Yucaipa High	4	3	75.00	0.99
252	393044	Middle College High	4	3	75.00	0.99
253	434070	Valley Christian High	4	3	75.00	0.99
254	484096	St. Patrick-St. Vincent High	4	3	75.00	0.99
255	543159	Exeter High	4	3	75.00	0.99
256	543241	Lindsay Senior High	4	3	75.00	0.99
257	544236	Porterville Apostolic Christia	4	3	75.00	0.99
258	243020	Buhach Colony High	58	43	74.14	0.98
259	503807	Central Valley High	130	96	73.85	0.98
260	503565	Oakdale High	71	52	73.24	0.97
261	393510	Manteca High	26	19	73.08	0.97
262	503001	Beyer (Fred C.) High	67	48	71.64	0.95
263	503490	Modesto High	140	100	71.43	0.94
264	393023	Bear Creek High	21	15	71.43	0.94
265	393265	Franklin Senior High	21	15	71.43	0.94
266	504125	Central Catholic High	21	15	71.43	0.94
267	503625	Patterson High	96	68	70.83	0.94
268	503112	Joseph A. Gregori High	34	24	70.59	0.93
269	393637	Lathrop High	10	7	70.00	0.93
270	393210	Edison High	23	16	69.57	0.92
271	243060	Atwater High	61	42	68.85	0.91
272	243180	Gustine High	16	11	68.75	0.91
273	393395	Linden High	9	6	66.67	0.88
274	433058	Downtown College Prep	9	6	66.67	0.88
275	033475	Argonaut High	6	4	66.67	0.88
276	363077	Redlands East Valley High	6	4	66.67	0.88
277	509328	Keyes to Learning Charter	6	4	66.67	0.88
278	073046	Deer Valley High	3	2	66.67	0.88
279	163560	Lemoore High	3	2	66.67	0.88
280	203020	Liberty High	3	2	66.67	0.88
281	333057	Cathedral City High	3	2	66.67	0.88
282	333440	North (John W.) High	3	2	66.67	0.88
283	343061	Sheldon High	3	2	66.67	0.88
284	373070	West Hills High	3	2	66.67	0.88
285	433086	Branham High	3	2	66.67	0.88
286	433331	Homestead High	3	2	66.67	0.88
287	483225	Dixon High	3	2	66.67	0.88

**California State University, Stanislaus
High School CEEB Code**

Rank	CEEB Code	High School	Total Number	Number Persisted	Persistence Rate (%)	Lift
288	543036	El Diamante High School	3	2	66.67	0.88
289	543628	Woodlake High	3	2	66.67	0.88
290	243420	Los Banos High	32	20	62.50	0.83
291	543021	Farmersville High	10	6	60.00	0.79
292	273017	Greenfield High	5	3	60.00	0.79
293	363055	Fontana Miller (A.B.) High	5	3	60.00	0.79
294	363390	Montclair High	5	3	60.00	0.79
295	504128	Modesto Adventist Academy	5	3	60.00	0.79
296	543323	Orosi High	5	3	60.00	0.79
297	393540	Institute of Environmental Tec	7	4	57.14	0.76
298	393157	Weston Ranch High	10	5	50.00	0.66
299	333099	Coachella Valley High	8	4	50.00	0.66
300	273010	Alisal High	4	2	50.00	0.66
301	273534	Seaside High	4	2	50.00	0.66
302	333792	Lakeside High	4	2	50.00	0.66
303	013009	Foothill High	2	1	50.00	0.66
304	013453	Livermore High	2	1	50.00	0.66
305	013466	James Logan High	2	1	50.00	0.66
306	013524	Mission San Jose High	2	1	50.00	0.66
307	013590	Oakland Senior High	2	1	50.00	0.66
308	073045	Freedom High	2	1	50.00	0.66
309	103062	Central High East Campus	2	1	50.00	0.66
310	103291	Herbert Hoover High	2	1	50.00	0.66
311	103343	Kerman High	2	1	50.00	0.66
312	153040	Frazier Mountain High	2	1	50.00	0.66
313	153660	West High	2	1	50.00	0.66
314	193123	Burroughs High	2	1	50.00	0.66
315	193130	California High	2	1	50.00	0.66
316	193149	Canyon High	2	1	50.00	0.66
317	193287	Los Angeles School of Global Studies	2	1	50.00	0.66
318	193773	San Dimas High	2	1	50.00	0.66
319	193944	Santee Educational Complex	2	1	50.00	0.66
320	194583	St. Bernard High	2	1	50.00	0.66
321	199994	Los Angeles International	2	1	50.00	0.66
322	203570	Madera High North	2	1	50.00	0.66
323	273019	Soledad High	2	1	50.00	0.66
324	274405	Notre Dame High	2	1	50.00	0.66
325	299237	Los Angeles Conservation Corps Charter	2	1	50.00	0.66
326	303057	Aliso Niguel High	2	1	50.00	0.66
327	303558	Pacifica High	2	1	50.00	0.66
328	333081	Desert Hot Springs High	2	1	50.00	0.66

**California State University, Stanislaus
High School CEEB Code**

Rank	CEEB Code	High School	Total Number	Number Persisted	Persistence Rate (%)	Lift
329	333513	Palm Springs High	2	1	50.00	0.66
330	343049	Bella Vista High	2	1	50.00	0.66
331	349913	Liberty Ranch High	2	1	50.00	0.66
332	363037	Etiwanda High	2	1	50.00	0.66
333	373233	Granite Hills High	2	1	50.00	0.66
334	393195	Benjamin Holt College Preparatory Academy	2	1	50.00	0.66
335	433001	Yerba Buena High	2	1	50.00	0.66
336	433003	Independence High	2	1	50.00	0.66
337	433066	Latino College Preparatory Academy	2	1	50.00	0.66
338	433069	Evergreen Valley High School	2	1	50.00	0.66
339	433688	KIPP San Jose Collegiate	2	1	50.00	0.66
340	443675	San Lorenzo Valley High	2	1	50.00	0.66
341	443790	Watsonville High	2	1	50.00	0.66
342	483880	Vanden High	2	1	50.00	0.66
343	493001	Casa Grande High	2	1	50.00	0.66
344	543540	Tulare High	2	1	50.00	0.66
345	563500	Royal High	2	1	50.00	0.66
346	600033	Grand Fork Central	2	1	50.00	0.66
347	504253	Big Valley Christian	13	6	46.15	0.61
348	393239	Millennium Charter	11	5	45.45	0.60
349	393822	Ronald E. McNair High	16	7	43.75	0.58
350	013390	Impact Academy of Arts and Technology	5	2	40.00	0.53
351	393047	Venture Academy	5	2	40.00	0.53
352	393475	Tokay High	5	2	40.00	0.53
353	363089	Granite Hills High	6	2	33.33	0.44
354	363090	Kaiser (Henry J.) High	6	2	33.33	0.44
355	013222	Castro Valley High	3	1	33.33	0.44
356	163440	Hanford High	3	1	33.33	0.44
357	203096	Madera South High	3	1	33.33	0.44
358	223535	Mariposa County High	3	1	33.33	0.44
359	283001	Vintage High	3	1	33.33	0.44
360	343111	Casa Roble Fundamental High	3	1	33.33	0.44
361	363080	Barstow High	3	1	33.33	0.44
362	393478	Lodi High	3	1	33.33	0.44
363	553650	Sonora High	3	1	33.33	0.44
364	553675	Summerville High	3	1	33.33	0.44
365	394227	Brookside Christian High School	4	1	25.00	0.33
366	103557	Riverdale High	6	1	16.67	0.22
367	244394	Stone Ridge Christian	3	0	0.00	0.00
368	019006	Oakland Unity High School	2	0	0.00	0.00
369	103105	Clovis High	2	0	0.00	0.00

**California State University, Stanislaus
High School CEEB Code**

Rank	CEEB Code	High School	Total Number	Number Persisted	Persistence Rate (%)	Lift
370	343463	Johnson (Hiram W.) High	2	0	0.00	0.00
371	393424	Pacific Law Academy	2	0	0.00	0.00
372	399849	Aspire Langston Hughes Academy	2	0	0.00	0.00
373	600030	New Mexico	2	0	0.00	0.00
374	013442	KIPP King Collegiate High	1	0	0.00	0.00
375	043735	Paradise Senior High	1	0	0.00	0.00
376	063750	Williams High	1	0	0.00	0.00
377	073086	Antioch High	1	0	0.00	0.00
378	073112	Campolindo High	1	0	0.00	0.00
379	073650	San Ramon Valley High	1	0	0.00	0.00
380	103019	Clovis West High	1	0	0.00	0.00
381	103049	Mendota High	1	0	0.00	0.00
382	103609	Sanger High	1	0	0.00	0.00
383	123070	Arcata High	1	0	0.00	0.00
384	133220	Calexico High	1	0	0.00	0.00
385	153070	Bakersfield High	1	0	0.00	0.00
386	153446	Mojave Senior High	1	0	0.00	0.00
387	153966	Paramount Bard Academy	1	0	0.00	0.00
388	193036	Artesia High	1	0	0.00	0.00
389	193065	Banning (Phineas) Senior High	1	0	0.00	0.00
390	193186	Cleveland (Grover) High	1	0	0.00	0.00
391	193300	King/Drew Medical Magnet High	1	0	0.00	0.00
392	193311	Fremont (John C.) Senior High	1	0	0.00	0.00
393	193324	Gardena Senior High	1	0	0.00	0.00
394	193447	Jordan High	1	0	0.00	0.00
395	193684	Animo Pat Brown	1	0	0.00	0.00
396	193756	Rowland (John A.) High	1	0	0.00	0.00
397	193762	San Fernando Senior High	1	0	0.00	0.00
398	193816	Sierra Vista High	1	0	0.00	0.00
399	193837	South Hills High	1	0	0.00	0.00
400	193855	Sylmar Senior High	1	0	0.00	0.00
401	193930	Washington (George) Preparatory High	1	0	0.00	0.00
402	193971	Vaughn Next Century Learning Center	1	0	0.00	0.00
403	194066	Bishop Montgomery High	1	0	0.00	0.00
404	194502	Junipero Serra High	1	0	0.00	0.00
405	199150	College Ready Academy High #4	1	0	0.00	0.00
406	199254	New Designs Charter	1	0	0.00	0.00
407	199539	Highland High	1	0	0.00	0.00
408	199566	South El Monte High	1	0	0.00	0.00
409	199581	Gabrielino High	1	0	0.00	0.00
410	274677	York	1	0	0.00	0.00

**California State University, Stanislaus
High School CEEB Code**

Rank	CEEB Code	High School	Total Number	Number Persisted	Persistence Rate (%)	Lift
411	283108	American Canyon High	1	0	0.00	0.00
412	293550	Nevada Union High	1	0	0.00	0.00
413	303006	El Toro High	1	0	0.00	0.00
414	303039	Trabuco Hills High	1	0	0.00	0.00
415	303166	Early College High	1	0	0.00	0.00
416	303305	Katella High	1	0	0.00	0.00
417	303393	Los Amigos High	1	0	0.00	0.00
418	303582	Saddleback High	1	0	0.00	0.00
419	313465	Lincoln High (Char)	1	0	0.00	0.00
420	313530	Oakmont High	1	0	0.00	0.00
421	313650	Roseville High	1	0	0.00	0.00
422	314289	Valley Christian Academy	1	0	0.00	0.00
423	333000	La Sierra High	1	0	0.00	0.00
424	333066	La Quinta High	1	0	0.00	0.00
425	333069	Choice 2000 On-Line (Char)	1	0	0.00	0.00
426	333085	Martin Luther King Jr. High School	1	0	0.00	0.00
427	333573	Great Oak High	1	0	0.00	0.00
428	333910	Citrus Hill High School	1	0	0.00	0.00
429	343004	Mesa Verde High	1	0	0.00	0.00
430	343101	Burbank (Luther) High	1	0	0.00	0.00
431	343242	Natomas Pacific Pathways Prep.	1	0	0.00	0.00
432	343283	Encina High	1	0	0.00	0.00
433	343321	Folsom High	1	0	0.00	0.00
434	363040	Hesperia High	1	0	0.00	0.00
435	363074	Sultana High	1	0	0.00	0.00
436	364837	Aquinas High	1	0	0.00	0.00
437	373031	University City High	1	0	0.00	0.00
438	373262	Grossmont High	1	0	0.00	0.00
439	373572	Mission Hills High	1	0	0.00	0.00
440	373741	San Dieguito High Academy	1	0	0.00	0.00
441	374881	Bishops The	1	0	0.00	0.00
442	383324	Abraham Lincoln High	1	0	0.00	0.00
443	403575	Paso Robles High	1	0	0.00	0.00
444	413272	Summit Preparatory Charter High	1	0	0.00	0.00
445	423306	Lompoc High	1	0	0.00	0.00
446	423603	Santa Maria High	1	0	0.00	0.00
447	433411	Los Altos High	1	0	0.00	0.00
448	433447	Milpitas High	1	0	0.00	0.00
449	434630	St. Francis High School	1	0	0.00	0.00
450	504023	Sierra View Christian	1	0	0.00	0.00
451	509021	Aspire Vanguard College Prepar	1	0	0.00	0.00

**California State University, Stanislaus
High School CEEB Code**

Rank	CEEB Code	High School	Total Number	Number Persisted	Persistence Rate (%)	Lift
452	543636	Mission Oak High	1	0	0.00	0.00
453	573880	Woodland Senior High	1	0	0.00	0.00
454	600003	Arizona	1	0	0.00	0.00
455	600032	North Carolina	1	0	0.00	0.00
456	600042	Texas	1	0	0.00	0.00
457	600043	Utah	1	0	0.00	0.00
458	600045	Virginia	1	0	0.00	0.00
459	600049	Wyoming	1	0	0.00	0.00
Total			3423	2588	75.61	1.00

**California State University, Stanislaus
Personix Cluster**

Rank	Value	Description	Total Number	Number Persisted	Persistence Rate (%)	Lift
1	54	Still Truckin'	5	5	100.00	1.32
2	41	Truckin' & Stylin'	3	3	100.00	1.32
3	32	Metro Mix	2	2	100.00	1.32
4	69	Pennywise Mortgages	2	2	100.00	1.32
5	30	Spouses & Houses	18	17	94.44	1.25
6	57	Collegiate Crowd	66	62	93.94	1.24
7	64	Rural Everlasting	13	12	92.31	1.22
8	34	Outward Bound	9	8	88.89	1.18
9	40	The Great Outdoors	9	8	88.89	1.18
10	51	Family Matters	16	14	87.50	1.16
11	70	Resilient Renters	15	13	86.67	1.15
12	46	Home Cooking	14	12	85.71	1.13
13	27	Soccer & SUVs	64	54	84.38	1.12
14	16	Country Single	6	5	83.33	1.10
15	18	Married Sophisticates	6	5	83.33	1.10
16	23	Acred Couples	29	24	82.76	1.09
17	12	Tots & Toys	34	28	82.35	1.09
18	6	Shooting Stars	147	120	81.63	1.08
19	42	First Mortgage	41	33	80.49	1.06
20	61	Urban Scramble	15	12	80.00	1.06
21	35	Solo & Stable	10	8	80.00	1.06
22	4	Skyboxes & Suburbans	217	173	79.72	1.05
23	36	Raisin' Grandkids	63	50	79.37	1.05
24	24	Career Building	106	84	79.25	1.05
25	45	First Digs	38	30	78.95	1.04
26	60	Rural Rovers	19	15	78.95	1.04
27	11	Kids & Clout	37	29	78.38	1.04
28	20	Dynamic Duos	23	18	78.26	1.04
29	55	Humble Homes	18	14	77.78	1.03
30	44	Community Singles	9	7	77.78	1.03
31	17	Apple Pie Families	309	240	77.67	1.03
32	19	Country Comfort	76	59	77.63	1.03
33	39	Early Parents	40	31	77.50	1.02
34	47	Rural Parents	31	24	77.42	1.02
35	63	Downtown Dwellers	53	41	77.36	1.02
36	31	Mid Americana	26	20	76.92	1.02
37	33	Urban Tenants	26	20	76.92	1.02
38	5	Sitting Pretty	190	146	76.84	1.02
39	37	Cartoons & Carpools	56	43	76.79	1.02

**California State University, Stanislaus
Personix Cluster**

Rank	Value	Description	Total Number	Number Persisted	Persistence Rate (%)	Lift
40	1	Summit Estates	57	43	75.44	1.00
41	14	Career-Centered Singles	65	49	75.38	1.00
42	25	Clubs & Causes	24	18	75.00	0.99
43	56	Modest Wages	12	9	75.00	0.99
44	52	Resolute Renters	27	20	74.07	0.98
45	53	Metro Parents	100	74	74.00	0.98
46	7	Lavish Lifestyles	123	91	73.98	0.98
47	49	Devoted Duos	11	8	72.73	0.96
48	67	Rolling Stones	51	37	72.55	0.96
49	59	Mobile Mixers	36	26	72.22	0.96
50	26	Savvy Singles	28	20	71.43	0.94
51	68	Pennywise Proprietors	7	5	71.43	0.94
52	3	Corporate Clout	101	72	71.29	0.94
53	ZZ	Missing Values	127	90	70.87	0.94
54	13	Solid Single Parents	248	174	70.16	0.93
55	38	Midtown Minivanners	131	91	69.47	0.92
56	62	Kids & Rent	39	27	69.23	0.92
57	15	Country Ways	26	18	69.23	0.92
58	58	Young Workboots	13	9	69.23	0.92
59	43	Work & Causes	16	11	68.75	0.91
60	9	Platinum Oldies	36	24	66.67	0.88
61	50	Rural Retirement	15	10	66.67	0.88
62	10	Hard Chargers	12	8	66.67	0.88
63	8	Full Steaming	55	36	65.45	0.87
64	22	Fun & Games	48	31	64.58	0.85
65	2	Established Elite	56	36	64.29	0.85
66	48	Farmland Families	22	14	63.64	0.84
67	28	Suburban Seniors	19	12	63.16	0.84
68	21	Children First	27	17	62.96	0.83
69	65	Thrifty Elders	23	14	60.87	0.81
70	66	Timeless Elders	6	3	50.00	0.66
71	29	City Mixers	1	0	0.00	0.00
Total			3423	2588	75.61	1.00

Notes:

1. Missing values are found in category "ZZ".

**California State University, Stanislaus
Total Loan Funds (Optimal Binning)**

Rank	Value	Total Number	Number Persisted	Persistence Rate (%)	Lift
1	\$1,551.00 and below	2114	1683	79.61	1.05
2	ZZ	364	276	75.82	1.00
3	Higher than \$1,551.00	945	629	66.56	0.88
Total		3423	2588	75.61	1.00

Notes:

1. Missing values are found in category "ZZ".

**California State University, Stanislaus
Primary Zip Code of Student**

Rank	Zip Code	City	State	Total Number	Number Persisted	Persistence Rate (%)	Lift
1	95020	Gilroy	CA	5	5	100.00	1.32
2	94568	Dublin	CA	4	4	100.00	1.32
3	95252	Valley Springs	CA	4	4	100.00	1.32
4	95303	Ballico	CA	4	4	100.00	1.32
5	91326	Northridge	CA	3	3	100.00	1.32
6	92399	Yucaipa	CA	3	3	100.00	1.32
7	93292	Visalia	CA	3	3	100.00	1.32
8	93905	Salinas	CA	3	3	100.00	1.32
9	94513	Brentwood	CA	3	3	100.00	1.32
10	94580	San Lorenzo	CA	3	3	100.00	1.32
11	95123	San Jose	CA	3	3	100.00	1.32
12	95313	Crows Landing	CA	3	3	100.00	1.32
13	95323	Hickman	CA	3	3	100.00	1.32
14	90042	Los Angeles	CA	2	2	100.00	1.32
15	90043	Los Angeles	CA	2	2	100.00	1.32
16	90706	Bellflower	CA	2	2	100.00	1.32
17	92324	Colton	CA	2	2	100.00	1.32
18	92551	Moreno Valley	CA	2	2	100.00	1.32
19	92562	Murrieta	CA	2	2	100.00	1.32
20	92595	Wildomar	CA	2	2	100.00	1.32
21	93242	Laton	CA	2	2	100.00	1.32
22	93247	Lindsay	CA	2	2	100.00	1.32
23	93455	Santa Maria	CA	2	2	100.00	1.32
24	93561	Tehachapi	CA	2	2	100.00	1.32
25	93622	Firebaugh	CA	2	2	100.00	1.32
26	93654	Reedley	CA	2	2	100.00	1.32
27	93725	Fresno	CA	2	2	100.00	1.32
28	94019	Half Moon Bay	CA	2	2	100.00	1.32
29	94565	Pittsburg	CA	2	2	100.00	1.32
30	94566	Pleasanton	CA	2	2	100.00	1.32
31	94605	Oakland	CA	2	2	100.00	1.32
32	95111	San Jose	CA	2	2	100.00	1.32
33	95112	San Jose	CA	2	2	100.00	1.32
34	95116	San Jose	CA	2	2	100.00	1.32
35	95118	San Jose	CA	2	2	100.00	1.32
36	95249	San Andreas	CA	2	2	100.00	1.32
37	95333	Le Grand	CA	2	2	100.00	1.32
38	95391	Tracy	CA	2	2	100.00	1.32
39	95632	Galt	CA	2	2	100.00	1.32

**California State University, Stanislaus
Primary Zip Code of Student**

Rank	Zip Code	City	State	Total Number	Number Persisted	Persistence Rate (%)	Lift
40	95640	Ione	CA	2	2	100.00	1.32
41	95831	Sacramento	CA	2	2	100.00	1.32
42	95953	Live Oak	CA	2	2	100.00	1.32
43	95993	Yuba City	CA	2	2	100.00	1.32
44	13057	East Syracuse	NY	1	1	100.00	1.32
45	58201	Grand Forks	ND	1	1	100.00	1.32
46	89436	Sparks	NV	1	1	100.00	1.32
47	89703	Carson City	NV	1	1	100.00	1.32
48	90001	Los Angeles	CA	1	1	100.00	1.32
49	90002	Los Angeles	CA	1	1	100.00	1.32
50	90003	Los Angeles	CA	1	1	100.00	1.32
51	90007	Los Angeles	CA	1	1	100.00	1.32
52	90015	Los Angeles	CA	1	1	100.00	1.32
53	90017	Los Angeles	CA	1	1	100.00	1.32
54	90018	Los Angeles	CA	1	1	100.00	1.32
55	90022	Los Angeles	CA	1	1	100.00	1.32
56	90025	Los Angeles	CA	1	1	100.00	1.32
57	90026	Los Angeles	CA	1	1	100.00	1.32
58	90031	Los Angeles	CA	1	1	100.00	1.32
59	90033	Los Angeles	CA	1	1	100.00	1.32
60	90044	Los Angeles	CA	1	1	100.00	1.32
61	90062	Los Angeles	CA	1	1	100.00	1.32
62	90212	Beverly Hills	CA	1	1	100.00	1.32
63	90255	Huntington Park	CA	1	1	100.00	1.32
64	90280	South Gate	CA	1	1	100.00	1.32
65	90301	Inglewood	CA	1	1	100.00	1.32
66	90303	Inglewood	CA	1	1	100.00	1.32
67	90304	Inglewood	CA	1	1	100.00	1.32
68	90305	Inglewood	CA	1	1	100.00	1.32
69	90501	Torrance	CA	1	1	100.00	1.32
70	90505	Torrance	CA	1	1	100.00	1.32
71	90604	Whittier	CA	1	1	100.00	1.32
72	90670	Santa Fe Springs	CA	1	1	100.00	1.32
73	91010	Duarte	CA	1	1	100.00	1.32
74	91011	La Canada Flintridge	CA	1	1	100.00	1.32
75	91105	Pasadena	CA	1	1	100.00	1.32
76	91306	Winnetka	CA	1	1	100.00	1.32
77	91344	Granada Hills	CA	1	1	100.00	1.32
78	91377	Oak Park	CA	1	1	100.00	1.32

**California State University, Stanislaus
Primary Zip Code of Student**

Rank	Zip Code	City	State	Total Number	Number Persisted	Persistence Rate (%)	Lift
79	91384	Castaic	CA	1	1	100.00	1.32
80	91387	Not Found		1	1	100.00	1.32
81	91402	Panorama City	CA	1	1	100.00	1.32
82	91423	Sherman Oaks	CA	1	1	100.00	1.32
83	91506	Burbank	CA	1	1	100.00	1.32
84	91702	Azusa	CA	1	1	100.00	1.32
85	91711	Claremont	CA	1	1	100.00	1.32
86	91730	Rancho Cucamonga	CA	1	1	100.00	1.32
87	91752	Mira Loma	CA	1	1	100.00	1.32
88	91764	Ontario	CA	1	1	100.00	1.32
89	91784	Upland	CA	1	1	100.00	1.32
90	91901	Alpine	CA	1	1	100.00	1.32
91	91913	Chula Vista	CA	1	1	100.00	1.32
92	91978	Spring Valley	CA	1	1	100.00	1.32
93	92027	Escondido	CA	1	1	100.00	1.32
94	92084	Vista	CA	1	1	100.00	1.32
95	92101	San Diego	CA	1	1	100.00	1.32
96	92107	San Diego	CA	1	1	100.00	1.32
97	92113	San Diego	CA	1	1	100.00	1.32
98	92124	San Diego	CA	1	1	100.00	1.32
99	92131	San Diego	CA	1	1	100.00	1.32
100	92270	Rancho Mirage	CA	1	1	100.00	1.32
101	92320	Calimesa	CA	1	1	100.00	1.32
102	92335	Fontana	CA	1	1	100.00	1.32
103	92354	Loma Linda	CA	1	1	100.00	1.32
104	92365	Newberry Springs	CA	1	1	100.00	1.32
105	92407	San Bernardino	CA	1	1	100.00	1.32
106	92410	San Bernardino	CA	1	1	100.00	1.32
107	92411	San Bernardino	CA	1	1	100.00	1.32
108	92503	Riverside	CA	1	1	100.00	1.32
109	92539	Anza	CA	1	1	100.00	1.32
110	92543	Hemet	CA	1	1	100.00	1.32
111	92555	Moreno Valley	CA	1	1	100.00	1.32
112	92584	Menifee	CA	1	1	100.00	1.32
113	92586	Sun City	CA	1	1	100.00	1.32
114	92841	Garden Grove	CA	1	1	100.00	1.32
115	92879	Corona	CA	1	1	100.00	1.32
116	92880	Corona	CA	1	1	100.00	1.32
117	92881	Corona	CA	1	1	100.00	1.32

**California State University, Stanislaus
Primary Zip Code of Student**

Rank	Zip Code	City	State	Total Number	Number Persisted	Persistence Rate (%)	Lift
118	93035	Oxnard	CA	1	1	100.00	1.32
119	93117	Goleta	CA	1	1	100.00	1.32
120	93202	Armona	CA	1	1	100.00	1.32
121	93203	Arvin	CA	1	1	100.00	1.32
122	93218	Ducor	CA	1	1	100.00	1.32
123	93275	Tulare	CA	1	1	100.00	1.32
124	93291	Visalia	CA	1	1	100.00	1.32
125	93314	Bakersfield	CA	1	1	100.00	1.32
126	93436	Lompoc	CA	1	1	100.00	1.32
127	93555	Ridgecrest	CA	1	1	100.00	1.32
128	93590	Palmdale	CA	1	1	100.00	1.32
129	93611	Clovis	CA	1	1	100.00	1.32
130	93625	Fowler	CA	1	1	100.00	1.32
131	93657	Sanger	CA	1	1	100.00	1.32
132	93665	South Dos Palos	CA	1	1	100.00	1.32
133	93726	Fresno	CA	1	1	100.00	1.32
134	93901	Salinas	CA	1	1	100.00	1.32
135	93907	Salinas	CA	1	1	100.00	1.32
136	93912	Not Found		1	1	100.00	1.32
137	93940	Monterey	CA	1	1	100.00	1.32
138	94014	Daly City	CA	1	1	100.00	1.32
139	94061	Redwood City	CA	1	1	100.00	1.32
140	94123	San Francisco	CA	1	1	100.00	1.32
141	94404	San Mateo	CA	1	1	100.00	1.32
142	94501	Alameda	CA	1	1	100.00	1.32
143	94502	Alameda	CA	1	1	100.00	1.32
144	94505	Not Found		1	1	100.00	1.32
145	94506	Danville	CA	1	1	100.00	1.32
146	94510	Benicia	CA	1	1	100.00	1.32
147	94539	Fremont	CA	1	1	100.00	1.32
148	94555	Fremont	CA	1	1	100.00	1.32
149	94559	Napa	CA	1	1	100.00	1.32
150	94572	Rodeo	CA	1	1	100.00	1.32
151	94585	Suisun City	CA	1	1	100.00	1.32
152	94587	Union City	CA	1	1	100.00	1.32
153	94621	Oakland	CA	1	1	100.00	1.32
154	94806	San Pablo	CA	1	1	100.00	1.32
155	94949	Novato	CA	1	1	100.00	1.32
156	95021	Gilroy	CA	1	1	100.00	1.32

**California State University, Stanislaus
Primary Zip Code of Student**

Rank	Zip Code	City	State	Total Number	Number Persisted	Persistence Rate (%)	Lift
157	95037	Morgan Hill	CA	1	1	100.00	1.32
158	95050	Santa Clara	CA	1	1	100.00	1.32
159	95060	Santa Cruz	CA	1	1	100.00	1.32
160	95070	Saratoga	CA	1	1	100.00	1.32
161	95120	San Jose	CA	1	1	100.00	1.32
162	95121	San Jose	CA	1	1	100.00	1.32
163	95126	San Jose	CA	1	1	100.00	1.32
164	95129	San Jose	CA	1	1	100.00	1.32
165	95130	San Jose	CA	1	1	100.00	1.32
166	95132	San Jose	CA	1	1	100.00	1.32
167	95134	San Jose	CA	1	1	100.00	1.32
168	95135	San Jose	CA	1	1	100.00	1.32
169	95139	San Jose	CA	1	1	100.00	1.32
170	95220	Acampo	CA	1	1	100.00	1.32
171	95223	Arnold	CA	1	1	100.00	1.32
172	95228	Copperopolis	CA	1	1	100.00	1.32
173	95234	Holt	CA	1	1	100.00	1.32
174	95245	Mokelumne Hill	CA	1	1	100.00	1.32
175	95247	Murphys	CA	1	1	100.00	1.32
176	95344	Not Found		1	1	100.00	1.32
177	95353	Not Found		1	1	100.00	1.32
178	95369	Snelling	CA	1	1	100.00	1.32
179	95404	Santa Rosa	CA	1	1	100.00	1.32
180	95448	Healdsburg	CA	1	1	100.00	1.32
181	95451	Kelseyville	CA	1	1	100.00	1.32
182	95669	Plymouth	CA	1	1	100.00	1.32
183	95677	Rocklin	CA	1	1	100.00	1.32
184	95690	Walnut Grove	CA	1	1	100.00	1.32
185	95691	West Sacramento	CA	1	1	100.00	1.32
186	95709	Camino	CA	1	1	100.00	1.32
187	95746	Granite Bay	CA	1	1	100.00	1.32
188	95758	Elk Grove	CA	1	1	100.00	1.32
189	95762	El Dorado Hills	CA	1	1	100.00	1.32
190	95829	Sacramento	CA	1	1	100.00	1.32
191	95901	Marysville	CA	1	1	100.00	1.32
192	96023	Dorris	CA	1	1	100.00	1.32
193	96133	Topaz	CA	1	1	100.00	1.32
194	96161	Truckee	CA	1	1	100.00	1.32
195	97306	Salem	OR	1	1	100.00	1.32

**California State University, Stanislaus
Primary Zip Code of Student**

Rank	Zip Code	City	State	Total Number	Number Persisted	Persistence Rate (%)	Lift
196	97401	Eugene	OR	1	1	100.00	1.32
197	98272	Monroe	WA	1	1	100.00	1.32
198	98540	East Olympia	WA	1	1	100.00	1.32
199	95365	Planada	CA	14	13	92.86	1.23
200	95320	Escalon	CA	26	24	92.31	1.22
201	95209	Stockton	CA	22	20	90.91	1.20
202	93620	Dos Palos	CA	24	21	87.50	1.16
203	95304	Tracy	CA	8	7	87.50	1.16
204	95374	Stevinson	CA	8	7	87.50	1.16
205	95324	Hilmar	CA	37	32	86.49	1.14
206	95354	Modesto	CA	35	30	85.71	1.13
207	95203	Stockton	CA	7	6	85.71	1.13
208	95326	Hughson	CA	56	47	83.93	1.11
209	95386	Waterford	CA	43	36	83.72	1.11
210	93257	Porterville	CA	6	5	83.33	1.10
211	94531	Antioch	CA	6	5	83.33	1.10
212	95336	Manteca	CA	41	34	82.93	1.10
213	95388	Winton	CA	29	24	82.76	1.09
214	95334	Livingston	CA	104	86	82.69	1.09
215	95328	Keyes	CA	23	19	82.61	1.09
216	95348	Merced	CA	38	31	81.58	1.08
217	95351	Modesto	CA	138	112	81.16	1.07
218	95380	Turlock	CA	156	125	80.13	1.06
219	95315	Delhi	CA	115	92	80.00	1.06
220	95023	Hollister	CA	10	8	80.00	1.06
221	95307	Ceres	CA	182	145	79.67	1.05
222	95356	Modesto	CA	82	65	79.27	1.05
223	95337	Manteca	CA	48	38	79.17	1.05
224	95367	Riverbank	CA	90	71	78.89	1.04
225	95382	Turlock	CA	354	279	78.81	1.04
226	95360	Newman	CA	42	33	78.57	1.04
227	95355	Modesto	CA	162	127	78.40	1.04
228	95316	Denair	CA	46	36	78.26	1.04
229	95376	Tracy	CA	31	24	77.42	1.02
230	95358	Modesto	CA	104	80	76.92	1.02
231	93610	Chowchilla	CA	17	13	76.47	1.01
232	95340	Merced	CA	20	15	75.00	0.99
233	95219	Stockton	CA	8	6	75.00	0.99
234	93277	Visalia	CA	4	3	75.00	0.99

**California State University, Stanislaus
Primary Zip Code of Student**

Rank	Zip Code	City	State	Total Number	Number Persisted	Persistence Rate (%)	Lift
235	95231	French Camp	CA	4	3	75.00	0.99
236	95387	Westley	CA	4	3	75.00	0.99
237	95685	Sutter Creek	CA	4	3	75.00	0.99
238	95357	Modesto	CA	59	44	74.58	0.99
239	95322	Gustine	CA	15	11	73.33	0.97
240	95330	Lathrop	CA	15	11	73.33	0.97
241	95207	Stockton	CA	11	8	72.73	0.96
242	95361	Oakdale	CA	72	52	72.22	0.96
243	95366	Ripon	CA	39	28	71.79	0.95
244	95363	Patterson	CA	95	68	71.58	0.95
245	95368	Salida	CA	49	35	71.43	0.94
246	95377	Tracy	CA	7	5	71.43	0.94
247	95341	Not Found		50	35	70.00	0.93
248	93274	Tulare	CA	10	7	70.00	0.93
249	95215	Stockton	CA	10	7	70.00	0.93
250	95301	Atwater	CA	73	51	69.86	0.92
251	95350	Modesto	CA	78	54	69.23	0.92
252	95205	Stockton	CA	19	13	68.42	0.90
253	93635	Los Banos	CA	34	23	67.65	0.89
254	95236	Linden	CA	6	4	66.67	0.88
255	91354	Valencia	CA	3	2	66.67	0.88
256	92071	Santee	CA	3	2	66.67	0.88
257	92882	Corona	CA	3	2	66.67	0.88
258	93286	Woodlake	CA	3	2	66.67	0.88
259	93638	Madera	CA	3	2	66.67	0.88
260	93906	Salinas	CA	3	2	66.67	0.88
261	94534	Fairfield	CA	3	2	66.67	0.88
262	94591	Vallejo	CA	3	2	66.67	0.88
263	95076	Watsonville	CA	3	2	66.67	0.88
264	93223	Farmersville	CA	8	5	62.50	0.83
265	95206	Stockton	CA	42	26	61.90	0.82
266	92336	Fontana	CA	5	3	60.00	0.79
267	93647	Orosi	CA	5	3	60.00	0.79
268	93927	Greenfield	CA	5	3	60.00	0.79
269	92236	Coachella	CA	7	4	57.14	0.76
270	95210	Stockton	CA	18	10	55.56	0.73
271	95212	Stockton	CA	18	10	55.56	0.73
272	95204	Stockton	CA	6	3	50.00	0.66
273	91763	Montclair	CA	4	2	50.00	0.66

**California State University, Stanislaus
Primary Zip Code of Student**

Rank	Zip Code	City	State	Total Number	Number Persisted	Persistence Rate (%)	Lift
274	92530	Lake Elsinore	CA	4	2	50.00	0.66
275	93727	Fresno	CA	4	2	50.00	0.66
276	95242	Lodi	CA	4	2	50.00	0.66
277	95319	Empire	CA	4	2	50.00	0.66
278	95370	Sonora	CA	4	2	50.00	0.66
279	90057	Los Angeles	CA	2	1	50.00	0.66
280	90221	Compton	CA	2	1	50.00	0.66
281	91342	Sylmar	CA	2	1	50.00	0.66
282	91723	Covina	CA	2	1	50.00	0.66
283	91773	San Dimas	CA	2	1	50.00	0.66
284	92223	Beaumont	CA	2	1	50.00	0.66
285	92240	Desert Hot Springs	CA	2	1	50.00	0.66
286	92311	Barstow	CA	2	1	50.00	0.66
287	92345	Hesperia	CA	2	1	50.00	0.66
288	92359	Mentone	CA	2	1	50.00	0.66
289	92563	Murrieta	CA	2	1	50.00	0.66
290	93225	Frazier Park	CA	2	1	50.00	0.66
291	93230	Hanford	CA	2	1	50.00	0.66
292	93245	Lemoore	CA	2	1	50.00	0.66
293	93309	Bakersfield	CA	2	1	50.00	0.66
294	93637	Madera	CA	2	1	50.00	0.66
295	93710	Fresno	CA	2	1	50.00	0.66
296	93955	Seaside	CA	2	1	50.00	0.66
297	93960	Soledad	CA	2	1	50.00	0.66
298	94541	Hayward	CA	2	1	50.00	0.66
299	94550	Livermore	CA	2	1	50.00	0.66
300	94588	Pleasanton	CA	2	1	50.00	0.66
301	94590	Vallejo	CA	2	1	50.00	0.66
302	94954	Petaluma	CA	2	1	50.00	0.66
303	95122	San Jose	CA	2	1	50.00	0.66
304	95124	San Jose	CA	2	1	50.00	0.66
305	95127	San Jose	CA	2	1	50.00	0.66
306	95312	Cressey	CA	2	1	50.00	0.66
307	95338	Mariposa	CA	2	1	50.00	0.66
308	95610	Citrus Heights	CA	2	1	50.00	0.66
309	95620	Dixon	CA	2	1	50.00	0.66
310	95630	Folsom	CA	2	1	50.00	0.66
311	95642	Jackson	CA	2	1	50.00	0.66
312	95666	Pioneer	CA	2	1	50.00	0.66

**California State University, Stanislaus
Primary Zip Code of Student**

Rank	Zip Code	City	State	Total Number	Number Persisted	Persistence Rate (%)	Lift
313	95757	Elk Grove	CA	2	1	50.00	0.66
314	95822	Sacramento	CA	2	1	50.00	0.66
315	95823	Sacramento	CA	2	1	50.00	0.66
316	92337	Fontana	CA	5	2	40.00	0.53
317	95381	Not Found		8	3	37.50	0.50
318	92307	Apple Valley	CA	3	1	33.33	0.44
319	92374	Redlands	CA	3	1	33.33	0.44
320	95240	Lodi	CA	3	1	33.33	0.44
321	95678	Roseville	CA	3	1	33.33	0.44
322	95128	San Jose	CA	4	1	25.00	0.33
323	93656	Riverdale	CA	5	1	20.00	0.26
324	92308	Apple Valley	CA	2	0	0.00	0.00
325	92592	Temecula	CA	2	0	0.00	0.00
326	92704	Santa Ana	CA	2	0	0.00	0.00
327	13090	Liverpool	NY	1	0	0.00	0.00
328	75078	Prosper	TX	1	0	0.00	0.00
329	83001	Jackson	WY	1	0	0.00	0.00
330	84341	Logan	UT	1	0	0.00	0.00
331	85711	Tucson	AZ	1	0	0.00	0.00
332	87544	Los Alamos	NM	1	0	0.00	0.00
333	90008	Los Angeles	CA	1	0	0.00	0.00
334	90037	Los Angeles	CA	1	0	0.00	0.00
335	90056	Los Angeles	CA	1	0	0.00	0.00
336	90059	Los Angeles	CA	1	0	0.00	0.00
337	90248	Gardena	CA	1	0	0.00	0.00
338	90603	Whittier	CA	1	0	0.00	0.00
339	90805	Long Beach	CA	1	0	0.00	0.00
340	91006	Arcadia	CA	1	0	0.00	0.00
341	91325	Northridge	CA	1	0	0.00	0.00
342	91331	Pacoima	CA	1	0	0.00	0.00
343	91504	Burbank	CA	1	0	0.00	0.00
344	91706	Baldwin Park	CA	1	0	0.00	0.00
345	91733	South El Monte	CA	1	0	0.00	0.00
346	91748	Rowland Heights	CA	1	0	0.00	0.00
347	91776	San Gabriel	CA	1	0	0.00	0.00
348	92020	El Cajon	CA	1	0	0.00	0.00
349	92021	El Cajon	CA	1	0	0.00	0.00
350	92024	Encinitas	CA	1	0	0.00	0.00
351	92069	San Marcos	CA	1	0	0.00	0.00

**California State University, Stanislaus
Primary Zip Code of Student**

Rank	Zip Code	City	State	Total Number	Number Persisted	Persistence Rate (%)	Lift
352	92117	San Diego	CA	1	0	0.00	0.00
353	92122	San Diego	CA	1	0	0.00	0.00
354	92201	Indio	CA	1	0	0.00	0.00
355	92253	La Quinta	CA	1	0	0.00	0.00
356	92262	Palm Springs	CA	1	0	0.00	0.00
357	92392	Victorville	CA	1	0	0.00	0.00
358	92507	Riverside	CA	1	0	0.00	0.00
359	92508	Riverside	CA	1	0	0.00	0.00
360	92626	Costa Mesa	CA	1	0	0.00	0.00
361	92649	Huntington Beach	CA	1	0	0.00	0.00
362	92656	Aliso Viejo	CA	1	0	0.00	0.00
363	92679	Trabuco Canyon	CA	1	0	0.00	0.00
364	92683	Westminster	CA	1	0	0.00	0.00
365	92691	Mission Viejo	CA	1	0	0.00	0.00
366	92806	Anaheim	CA	1	0	0.00	0.00
367	93065	Simi Valley	CA	1	0	0.00	0.00
368	93215	Delano	CA	1	0	0.00	0.00
369	93221	Exeter	CA	1	0	0.00	0.00
370	93458	Santa Maria	CA	1	0	0.00	0.00
371	93551	Palmdale	CA	1	0	0.00	0.00
372	93619	Clovis	CA	1	0	0.00	0.00
373	93630	Kerman	CA	1	0	0.00	0.00
374	93636	Not Found		1	0	0.00	0.00
375	93711	Fresno	CA	1	0	0.00	0.00
376	93722	Fresno	CA	1	0	0.00	0.00
377	93930	King City	CA	1	0	0.00	0.00
378	94010	Burlingame	CA	1	0	0.00	0.00
379	94024	Los Altos	CA	1	0	0.00	0.00
380	94043	Mountain View	CA	1	0	0.00	0.00
381	94070	San Carlos	CA	1	0	0.00	0.00
382	94121	San Francisco	CA	1	0	0.00	0.00
383	94509	Antioch	CA	1	0	0.00	0.00
384	94526	Danville	CA	1	0	0.00	0.00
385	94536	Fremont	CA	1	0	0.00	0.00
386	94544	Hayward	CA	1	0	0.00	0.00
387	94545	Hayward	CA	1	0	0.00	0.00
388	94549	Lafayette	CA	1	0	0.00	0.00
389	94558	Napa	CA	1	0	0.00	0.00
390	94578	San Leandro	CA	1	0	0.00	0.00

**California State University, Stanislaus
Primary Zip Code of Student**

Rank	Zip Code	City	State	Total Number	Number Persisted	Persistence Rate (%)	Lift
391	94579	San Leandro	CA	1	0	0.00	0.00
392	94601	Oakland	CA	1	0	0.00	0.00
393	94603	Oakland	CA	1	0	0.00	0.00
394	94606	Oakland	CA	1	0	0.00	0.00
395	95003	Aptos	CA	1	0	0.00	0.00
396	95018	Felton	CA	1	0	0.00	0.00
397	95035	Milpitas	CA	1	0	0.00	0.00
398	95045	San Juan Bautista	CA	1	0	0.00	0.00
399	95051	Santa Clara	CA	1	0	0.00	0.00
400	95054	Santa Clara	CA	1	0	0.00	0.00
401	95131	San Jose	CA	1	0	0.00	0.00
402	95148	San Jose	CA	1	0	0.00	0.00
403	95310	Columbia	CA	1	0	0.00	0.00
404	95327	Jamestown	CA	1	0	0.00	0.00
405	95383	Twain Harte	CA	1	0	0.00	0.00
406	95521	Arcata	CA	1	0	0.00	0.00
407	95628	Fair Oaks	CA	1	0	0.00	0.00
408	95638	Herald	CA	1	0	0.00	0.00
409	95648	Lincoln	CA	1	0	0.00	0.00
410	95661	Roseville	CA	1	0	0.00	0.00
411	95662	Orangevale	CA	1	0	0.00	0.00
412	95670	Rancho Cordova	CA	1	0	0.00	0.00
413	95695	Woodland	CA	1	0	0.00	0.00
414	95820	Sacramento	CA	1	0	0.00	0.00
415	95825	Sacramento	CA	1	0	0.00	0.00
416	95834	Sacramento	CA	1	0	0.00	0.00
417	95945	Grass Valley	CA	1	0	0.00	0.00
418	95969	Paradise	CA	1	0	0.00	0.00
419	95987	Williams	CA	1	0	0.00	0.00
420	97532	Merlin	OR	1	0	0.00	0.00
421	98684	Vancouver	WA	1	0	0.00	0.00
Total				3423	2588	75.61	1.00

**California State University, Stanislaus
Total Loan Funds**

Rank	Value	Total Number	Number Persisted	Persistence Rate (%)	Lift
1	\$0.00-\$1,749.00	2139	1699	79.43	1.05
2	ZZ	364	276	75.82	1.00
3	\$1,750.00-high	920	613	66.63	0.88
Total		3423	2588	75.61	1.00

Notes:

1. Missing values are found in category "ZZ".

**California State University, Stanislaus
Total Loan Funds (Equal Bins)**

Rank	Value	Total Number	Number Persisted	Persistence Rate (%)	Lift
1	\$0.00 or Less	1949	1553	79.68	1.05
2	ZZ	364	276	75.82	1.00
3	\$0.01 to \$1,750.00	1107	758	68.47	0.91
4	\$1,750.01 or Greater	3	1	33.33	0.44
Total		3423	2588	75.61	1.00

Notes:

1. Missing values are found in category "ZZ".

**California State University, Stanislaus
State/City Combination**

Rank	State	City	Total Number	Number Persisted	Persistence Rate (%)	Lift
1	CA	Gilroy	6	6	100.00	1.32
2	CA	Ballico	4	4	100.00	1.32
3	CA	Dublin	4	4	100.00	1.32
4	CA	Inglewood	4	4	100.00	1.32
5	CA	Valley Springs	4	4	100.00	1.32
6	CA	Brentwood	3	3	100.00	1.32
7	CA	Crows Landing	3	3	100.00	1.32
8	CA	Hickman	3	3	100.00	1.32
9	CA	Moreno Valley	3	3	100.00	1.32
10	CA	San Bernardino	3	3	100.00	1.32
11	CA	San Lorenzo	3	3	100.00	1.32
12	CA	Yucaipa	3	3	100.00	1.32
13	CA	Alameda	2	2	100.00	1.32
14	CA	Bellflower	2	2	100.00	1.32
15	CA	Colton	2	2	100.00	1.32
16	CA	Firebaugh	2	2	100.00	1.32
17	CA	Galt	2	2	100.00	1.32
18	CA	Half Moon Bay	2	2	100.00	1.32
19	CA	Ione	2	2	100.00	1.32
20	CA	Laton	2	2	100.00	1.32
21	CA	Le Grand	2	2	100.00	1.32
22	CA	Lindsay	2	2	100.00	1.32
23	CA	Live Oak	2	2	100.00	1.32
24	CA	Porter Ranch	2	2	100.00	1.32
25	CA	Reedley	2	2	100.00	1.32
26	CA	San Andreas	2	2	100.00	1.32
27	CA	Tehachapi	2	2	100.00	1.32
28	CA	Torrance	2	2	100.00	1.32
29	CA	Wildomar	2	2	100.00	1.32
30	CA	Yuba City	2	2	100.00	1.32
31	CA	Acampo	1	1	100.00	1.32
32	CA	Alpine	1	1	100.00	1.32
33	CA	Anza	1	1	100.00	1.32
34	CA	Armona	1	1	100.00	1.32
35	CA	Arnold	1	1	100.00	1.32
36	CA	Arvin	1	1	100.00	1.32
37	CA	Azusa	1	1	100.00	1.32
38	CA	Bay Point	1	1	100.00	1.32
39	CA	Benicia	1	1	100.00	1.32

**California State University, Stanislaus
State/City Combination**

Rank	State	City	Total Number	Number Persisted	Persistence Rate (%)	Lift
40	CA	Beverly Hills	1	1	100.00	1.32
41	CA	Calimesa	1	1	100.00	1.32
42	CA	Camino	1	1	100.00	1.32
43	CA	Canyon Country	1	1	100.00	1.32
44	CA	Castaic	1	1	100.00	1.32
45	CA	Chula Vista	1	1	100.00	1.32
46	CA	Claremont	1	1	100.00	1.32
47	CA	Copperopolis	1	1	100.00	1.32
48	CA	Daly City	1	1	100.00	1.32
49	CA	Discovery Bay	1	1	100.00	1.32
50	CA	Dorris	1	1	100.00	1.32
51	CA	Duarte	1	1	100.00	1.32
52	CA	Ducor	1	1	100.00	1.32
53	CA	El Dorado Hills	1	1	100.00	1.32
54	CA	Escondido	1	1	100.00	1.32
55	CA	Foster City	1	1	100.00	1.32
56	CA	Fowler	1	1	100.00	1.32
57	CA	Garden Grove	1	1	100.00	1.32
58	CA	Goleta	1	1	100.00	1.32
59	CA	Granada Hills	1	1	100.00	1.32
60	CA	Granite Bay	1	1	100.00	1.32
61	CA	Grayson	1	1	100.00	1.32
62	CA	Healdsburg	1	1	100.00	1.32
63	CA	Hemet	1	1	100.00	1.32
64	CA	Holt	1	1	100.00	1.32
65	CA	Huntington Park	1	1	100.00	1.32
66	CA	Kelseyville	1	1	100.00	1.32
67	CA	La Canada Flintridge	1	1	100.00	1.32
68	CA	Loma Linda	1	1	100.00	1.32
69	CA	Lompoc	1	1	100.00	1.32
70	CA	Marysville	1	1	100.00	1.32
71	CA	Menifee	1	1	100.00	1.32
72	CA	Mira Loma	1	1	100.00	1.32
73	CA	Mokelumne Hill	1	1	100.00	1.32
74	CA	Monterey	1	1	100.00	1.32
75	CA	Morgan Hill	1	1	100.00	1.32
76	CA	Mountain House	1	1	100.00	1.32
77	CA	Murphys	1	1	100.00	1.32
78	CA	Newberry Springs	1	1	100.00	1.32

**California State University, Stanislaus
State/City Combination**

Rank	State	City	Total Number	Number Persisted	Persistence Rate (%)	Lift
79	CA	Novato	1	1	100.00	1.32
80	CA	Oak Park	1	1	100.00	1.32
81	CA	Ontario	1	1	100.00	1.32
82	CA	Oxnard	1	1	100.00	1.32
83	CA	Panorama City	1	1	100.00	1.32
84	CA	Pasadena	1	1	100.00	1.32
85	CA	Pittsburg	1	1	100.00	1.32
86	CA	Plymouth	1	1	100.00	1.32
87	CA	Porter Rance	1	1	100.00	1.32
88	CA	Rancho Cucamonga	1	1	100.00	1.32
89	CA	Rancho Mirage	1	1	100.00	1.32
90	CA	Redwood City	1	1	100.00	1.32
91	CA	Ridgecrest	1	1	100.00	1.32
92	CA	Rocklin	1	1	100.00	1.32
93	CA	Rodeo	1	1	100.00	1.32
94	CA	San Pablo	1	1	100.00	1.32
95	CA	Sanger	1	1	100.00	1.32
96	CA	Santa Cruz	1	1	100.00	1.32
97	CA	Santa Fe Springs	1	1	100.00	1.32
98	CA	Santa Rosa	1	1	100.00	1.32
99	CA	Saratoga	1	1	100.00	1.32
100	CA	Sherman Oaks	1	1	100.00	1.32
101	CA	Snelling	1	1	100.00	1.32
102	CA	South Dos Palos	1	1	100.00	1.32
103	CA	South Gate	1	1	100.00	1.32
104	CA	Spring Valley	1	1	100.00	1.32
105	CA	Suisun City	1	1	100.00	1.32
106	CA	Sun City	1	1	100.00	1.32
107	CA	Topaz	1	1	100.00	1.32
108	CA	Truckee	1	1	100.00	1.32
109	CA	Union City	1	1	100.00	1.32
110	CA	Upland	1	1	100.00	1.32
111	CA	Vista	1	1	100.00	1.32
112	CA	Walnut Grove	1	1	100.00	1.32
113	CA	West Sacramento	1	1	100.00	1.32
114	CA	Winnetka	1	1	100.00	1.32
115	ND	Grand Forks	1	1	100.00	1.32
116	NV	Carson City	1	1	100.00	1.32
117	NV	Sparks	1	1	100.00	1.32

**California State University, Stanislaus
State/City Combination**

Rank	State	City	Total Number	Number Persisted	Persistence Rate (%)	Lift
118	NY	East Syracuse	1	1	100.00	1.32
119	OR	Eugene	1	1	100.00	1.32
120	OR	Salem	1	1	100.00	1.32
121	WA	East Olympia	1	1	100.00	1.32
122	WA	Monroe	1	1	100.00	1.32
123	CA	Planada	14	13	92.86	1.23
124	CA	Escalon	26	24	92.31	1.22
125	CA	Salinas	9	8	88.89	1.18
126	CA	Dos Palos	24	21	87.50	1.16
127	CA	Stevinson	8	7	87.50	1.16
128	CA	Visalia	8	7	87.50	1.16
129	CA	Hilmar	37	32	86.49	1.14
130	CA	Hughson	56	47	83.93	1.11
131	CA	Waterford	43	36	83.72	1.11
132	CA	Corona	6	5	83.33	1.10
133	CA	Porterville	6	5	83.33	1.10
134	CA	Winton	29	24	82.76	1.09
135	CA	Livingston	104	86	82.69	1.09
136	CA	Keyes	23	19	82.61	1.09
137	CA	Manteca	89	72	80.90	1.07
138	CA	Delhi	115	92	80.00	1.06
139	CA	Hollister	10	8	80.00	1.06
140	CA	Ceres	182	145	79.67	1.05
141	CA	Los Angeles	24	19	79.17	1.05
142	CA	Riverbank	90	71	78.89	1.04
143	CA	Turlock	517	407	78.72	1.04
144	CA	Tracy	47	37	78.72	1.04
145	CA	Newman	42	33	78.57	1.04
146	CA	Denair	46	36	78.26	1.04
147	CA	Modesto	659	513	77.85	1.03
148	CA	Chowchilla	17	13	76.47	1.01
149	CA	Merced	109	82	75.23	0.99
150	CA	San Jose	32	24	75.00	0.99
151	CA	French Camp	4	3	75.00	0.99
152	CA	Murrieta	4	3	75.00	0.99
153	CA	Pleasanton	4	3	75.00	0.99
154	CA	Sutter Creek	4	3	75.00	0.99
155	CA	Westley	4	3	75.00	0.99
156	CA	Gustine	15	11	73.33	0.97

**California State University, Stanislaus
State/City Combination**

Rank	State	City	Total Number	Number Persisted	Persistence Rate (%)	Lift
157	CA	Lathrop	15	11	73.33	0.97
158	CA	Tulare	11	8	72.73	0.96
159	CA	Oakdale	72	52	72.22	0.96
160	CA	Ripon	39	28	71.79	0.95
161	CA	Salida	49	35	71.43	0.94
162	CA	Antioch	7	5	71.43	0.94
163	CA	San Diego	7	5	71.43	0.94
164	CA	Patterson	94	67	71.28	0.94
165	CA	Atwater	73	51	69.86	0.92
166	CA	Stockton	161	109	67.70	0.90
167	CA	Los Banos	34	23	67.65	0.89
168	CA	Linden	6	4	66.67	0.88
169	CA	Bakersfield	3	2	66.67	0.88
170	CA	Elk Grove	3	2	66.67	0.88
171	CA	Fairfield	3	2	66.67	0.88
172	CA	Fremont	3	2	66.67	0.88
173	CA	Santa Maria	3	2	66.67	0.88
174	CA	Santee	3	2	66.67	0.88
175	CA	Valencia	3	2	66.67	0.88
176	CA	Watsonville	3	2	66.67	0.88
177	CA	Woodlake	3	2	66.67	0.88
178	CA	Farmersville	8	5	62.50	0.83
179	CA	Greenfield	5	3	60.00	0.79
180	CA	Orosi	5	3	60.00	0.79
181	CA	Vallejo	5	3	60.00	0.79
182	CA	Coachella	7	4	57.14	0.76
183	CA	Fontana	11	6	54.55	0.72
184	CA	Fresno	11	6	54.55	0.72
185	CA	Sacramento	10	5	50.00	0.66
186	CA	Madera	6	3	50.00	0.66
187	CA	Oakland	6	3	50.00	0.66
188	CA	Empire	4	2	50.00	0.66
189	CA	Lake Elsinore	4	2	50.00	0.66
190	CA	Montclair	4	2	50.00	0.66
191	CA	Sonora	4	2	50.00	0.66
192	CA	Barstow	2	1	50.00	0.66
193	CA	Beaumont	2	1	50.00	0.66
194	CA	Burbank	2	1	50.00	0.66
195	CA	Citrus Heights	2	1	50.00	0.66

**California State University, Stanislaus
State/City Combination**

Rank	State	City	Total Number	Number Persisted	Persistence Rate (%)	Lift
196	CA	Clovis	2	1	50.00	0.66
197	CA	Compton	2	1	50.00	0.66
198	CA	Covina	2	1	50.00	0.66
199	CA	Cressey	2	1	50.00	0.66
200	CA	Danville	2	1	50.00	0.66
201	CA	Desert Hot Springs	2	1	50.00	0.66
202	CA	Dixon	2	1	50.00	0.66
203	CA	Folsom	2	1	50.00	0.66
204	CA	Frazier Park	2	1	50.00	0.66
205	CA	Hanford	2	1	50.00	0.66
206	CA	Hesperia	2	1	50.00	0.66
207	CA	Jackson	2	1	50.00	0.66
208	CA	Lemoore	2	1	50.00	0.66
209	CA	Livermore	2	1	50.00	0.66
210	CA	Mariposa	2	1	50.00	0.66
211	CA	Mentone	2	1	50.00	0.66
212	CA	Napa	2	1	50.00	0.66
213	CA	Palmdale	2	1	50.00	0.66
214	CA	Petaluma	2	1	50.00	0.66
215	CA	Pioneer	2	1	50.00	0.66
216	CA	San Dimas	2	1	50.00	0.66
217	CA	San Francisco	2	1	50.00	0.66
218	CA	Seaside	2	1	50.00	0.66
219	CA	Soledad	2	1	50.00	0.66
220	CA	Sylmar	2	1	50.00	0.66
221	CA	Whittier	2	1	50.00	0.66
222	CA	Lodi	7	3	42.86	0.57
223	CA	Redlands	3	1	33.33	0.44
224	CA	Riverside	3	1	33.33	0.44
225	CA	Santa Clara	3	1	33.33	0.44
226	CA	Hayward	4	1	25.00	0.33
227	CA	Roseville	4	1	25.00	0.33
228	CA	Apple Valley	5	1	20.00	0.26
229	CA	Riverdale	5	1	20.00	0.26
230	CA	El Cajon	2	0	0.00	0.00
231	CA	San Leandro	2	0	0.00	0.00
232	CA	Santa Ana	2	0	0.00	0.00
233	CA	Temecula	2	0	0.00	0.00
234	AZ	Tucson	1	0	0.00	0.00

**California State University, Stanislaus
State/City Combination**

Rank	State	City	Total Number	Number Persisted	Persistence Rate (%)	Lift
235	CA	Aliso Viejo	1	0	0.00	0.00
236	CA	Anaheim	1	0	0.00	0.00
237	CA	Aptos	1	0	0.00	0.00
238	CA	Arcadia	1	0	0.00	0.00
239	CA	Arcata	1	0	0.00	0.00
240	CA	Baldwin Park	1	0	0.00	0.00
241	CA	Columbia	1	0	0.00	0.00
242	CA	Costa Mesa	1	0	0.00	0.00
243	CA	Delano	1	0	0.00	0.00
244	CA	Encinitas	1	0	0.00	0.00
245	CA	Exeter	1	0	0.00	0.00
246	CA	Fair Oaks	1	0	0.00	0.00
247	CA	Felton	1	0	0.00	0.00
248	CA	Gardena	1	0	0.00	0.00
249	CA	Grass Valley	1	0	0.00	0.00
250	CA	Herald	1	0	0.00	0.00
251	CA	Hillsborough	1	0	0.00	0.00
252	CA	Huntington Beach	1	0	0.00	0.00
253	CA	Indio	1	0	0.00	0.00
254	CA	Jamestown	1	0	0.00	0.00
255	CA	Kerman	1	0	0.00	0.00
256	CA	King City	1	0	0.00	0.00
257	CA	La Quinta	1	0	0.00	0.00
258	CA	Lafayette	1	0	0.00	0.00
259	CA	Lincoln	1	0	0.00	0.00
260	CA	Long Beach	1	0	0.00	0.00
261	CA	Los Altos	1	0	0.00	0.00
262	CA	Milpitas	1	0	0.00	0.00
263	CA	Mission Viejo	1	0	0.00	0.00
264	CA	Mountain View	1	0	0.00	0.00
265	CA	Northridge	1	0	0.00	0.00
266	CA	Orangevale	1	0	0.00	0.00
267	CA	Pacoima	1	0	0.00	0.00
268	CA	Palm Springs	1	0	0.00	0.00
269	CA	Paradise	1	0	0.00	0.00
270	CA	Rancho Cordova	1	0	0.00	0.00
271	CA	Rowland Heights	1	0	0.00	0.00
272	CA	San Carlos	1	0	0.00	0.00
273	CA	San Gabriel	1	0	0.00	0.00

**California State University, Stanislaus
State/City Combination**

Rank	State	City	Total Number	Number Persisted	Persistence Rate (%)	Lift
274	CA	San Juan Bautista	1	0	0.00	0.00
275	CA	San Marcos	1	0	0.00	0.00
276	CA	Simi Valley	1	0	0.00	0.00
277	CA	South El Monte	1	0	0.00	0.00
278	CA	Trabuco Canyon	1	0	0.00	0.00
279	CA	Turlock	1	0	0.00	0.00
280	CA	Twain Harte	1	0	0.00	0.00
281	CA	Victorville	1	0	0.00	0.00
282	CA	Westminster	1	0	0.00	0.00
283	CA	Williams	1	0	0.00	0.00
284	CA	Woodland	1	0	0.00	0.00
285	NM	Los Alamos	1	0	0.00	0.00
286	NY	Liverpool	1	0	0.00	0.00
287	OR	Merlin	1	0	0.00	0.00
288	TX	Prosper	1	0	0.00	0.00
289	UT	Logan	1	0	0.00	0.00
290	WA	Vancouver	1	0	0.00	0.00
291	WY	Jackson Hole	1	0	0.00	0.00
Total			3423	2588	75.61	1.00

**California State University, Stanislaus
Distance from Campus**

Rank	Value	Total Number	Number Persisted	Persistence Rate (%)	Lift
1	01:low-7.72 miles	854	684	80.09	1.06
2	02:7.73-14.40 miles	857	676	78.88	1.04
3	03:14.41-31.62 miles	856	650	75.93	1.00
4	04:31.63 miles-high	856	578	67.52	0.89
Total		3423	2588	75.61	1.00

California State University, Stanislaus
Fall-to-spring GPA - 2nd term

Rank	Total		Number		Persistence	Lift
	Value	Number	Persisted	Rate (%)		
1	3.538	13	13	100.00	1.32	
2	3.575	13	13	100.00	1.32	
3	3.469	9	9	100.00	1.32	
4	3.158	8	8	100.00	1.32	
5	3.163	8	8	100.00	1.32	
6	2.28	7	7	100.00	1.32	
7	3.05	7	7	100.00	1.32	
8	3.167	7	7	100.00	1.32	
9	3.19	7	7	100.00	1.32	
10	3.283	7	7	100.00	1.32	
11	3.61	7	7	100.00	1.32	
12	2.588	6	6	100.00	1.32	
13	2.814	6	6	100.00	1.32	
14	2.857	6	6	100.00	1.32	
15	2.905	6	6	100.00	1.32	
16	2.98	6	6	100.00	1.32	
17	2.986	6	6	100.00	1.32	
18	3.008	6	6	100.00	1.32	
19	3.14	6	6	100.00	1.32	
20	3.162	6	6	100.00	1.32	
21	3.338	6	6	100.00	1.32	
22	3.45	6	6	100.00	1.32	
23	3.608	6	6	100.00	1.32	
24	3.667	6	6	100.00	1.32	
25	2.117	5	5	100.00	1.32	
26	2.231	5	5	100.00	1.32	
27	2.46	5	5	100.00	1.32	
28	2.529	5	5	100.00	1.32	
29	2.86	5	5	100.00	1.32	
30	2.862	5	5	100.00	1.32	
31	2.918	5	5	100.00	1.32	
32	3.025	5	5	100.00	1.32	
33	3.092	5	5	100.00	1.32	
34	3.125	5	5	100.00	1.32	
35	3.31	5	5	100.00	1.32	
36	3.352	5	5	100.00	1.32	
37	3.567	5	5	100.00	1.32	
38	3.625	5	5	100.00	1.32	
39	3.637	5	5	100.00	1.32	

California State University, Stanislaus
Fall-to-spring GPA - 2nd term

Rank	Total		Number		Persistence	
	Value	Number	Persisted	Rate (%)	Lift	
40	3.844	5	5	100.00	1.32	
41	2.463	4	4	100.00	1.32	
42	2.631	4	4	100.00	1.32	
43	2.632	4	4	100.00	1.32	
44	2.68	4	4	100.00	1.32	
45	2.74	4	4	100.00	1.32	
46	2.742	4	4	100.00	1.32	
47	2.796	4	4	100.00	1.32	
48	2.82	4	4	100.00	1.32	
49	2.832	4	4	100.00	1.32	
50	2.915	4	4	100.00	1.32	
51	2.964	4	4	100.00	1.32	
52	2.975	4	4	100.00	1.32	
53	3.111	4	4	100.00	1.32	
54	3.133	4	4	100.00	1.32	
55	3.243	4	4	100.00	1.32	
56	3.271	4	4	100.00	1.32	
57	3.288	4	4	100.00	1.32	
58	3.315	4	4	100.00	1.32	
59	3.364	4	4	100.00	1.32	
60	3.464	4	4	100.00	1.32	
61	3.486	4	4	100.00	1.32	
62	3.54	4	4	100.00	1.32	
63	3.588	4	4	100.00	1.32	
64	3.631	4	4	100.00	1.32	
65	3.636	4	4	100.00	1.32	
66	3.638	4	4	100.00	1.32	
67	3.64	4	4	100.00	1.32	
68	3.677	4	4	100.00	1.32	
69	3.756	4	4	100.00	1.32	
70	3.76	4	4	100.00	1.32	
71	3.838	4	4	100.00	1.32	
72	3.889	4	4	100.00	1.32	
73	3.931	4	4	100.00	1.32	
74	3.94	4	4	100.00	1.32	
75	3.963	4	4	100.00	1.32	
76	2.423	3	3	100.00	1.32	
77	2.426	3	3	100.00	1.32	
78	2.43	3	3	100.00	1.32	

California State University, Stanislaus
Fall-to-spring GPA - 2nd term

Rank	Total		Number		Persistence	
	Value	Number	Persisted	Rate (%)	Lift	
79	2.462	3	3	100.00	1.32	
80	2.472	3	3	100.00	1.32	
81	2.538	3	3	100.00	1.32	
82	2.55	3	3	100.00	1.32	
83	2.554	3	3	100.00	1.32	
84	2.58	3	3	100.00	1.32	
85	2.586	3	3	100.00	1.32	
86	2.614	3	3	100.00	1.32	
87	2.629	3	3	100.00	1.32	
88	2.645	3	3	100.00	1.32	
89	2.684	3	3	100.00	1.32	
90	2.685	3	3	100.00	1.32	
91	2.733	3	3	100.00	1.32	
92	2.771	3	3	100.00	1.32	
93	2.784	3	3	100.00	1.32	
94	2.829	3	3	100.00	1.32	
95	2.843	3	3	100.00	1.32	
96	2.846	3	3	100.00	1.32	
97	2.856	3	3	100.00	1.32	
98	2.865	3	3	100.00	1.32	
99	2.883	3	3	100.00	1.32	
100	2.888	3	3	100.00	1.32	
101	2.892	3	3	100.00	1.32	
102	2.895	3	3	100.00	1.32	
103	2.908	3	3	100.00	1.32	
104	2.92	3	3	100.00	1.32	
105	2.927	3	3	100.00	1.32	
106	2.943	3	3	100.00	1.32	
107	2.953	3	3	100.00	1.32	
108	2.992	3	3	100.00	1.32	
109	2.995	3	3	100.00	1.32	
110	3.012	3	3	100.00	1.32	
111	3.033	3	3	100.00	1.32	
112	3.038	3	3	100.00	1.32	
113	3.057	3	3	100.00	1.32	
114	3.06	3	3	100.00	1.32	
115	3.063	3	3	100.00	1.32	
116	3.079	3	3	100.00	1.32	
117	3.082	3	3	100.00	1.32	

California State University, Stanislaus
Fall-to-spring GPA - 2nd term

Rank	Total		Number		Persistence	
	Value	Number	Persisted	Rate (%)	Lift	
118	3.084	3	3	100.00	1.32	
119	3.086	3	3	100.00	1.32	
120	3.129	3	3	100.00	1.32	
121	3.156	3	3	100.00	1.32	
122	3.16	3	3	100.00	1.32	
123	3.191	3	3	100.00	1.32	
124	3.254	3	3	100.00	1.32	
125	3.256	3	3	100.00	1.32	
126	3.257	3	3	100.00	1.32	
127	3.27	3	3	100.00	1.32	
128	3.275	3	3	100.00	1.32	
129	3.313	3	3	100.00	1.32	
130	3.357	3	3	100.00	1.32	
131	3.439	3	3	100.00	1.32	
132	3.443	3	3	100.00	1.32	
133	3.444	3	3	100.00	1.32	
134	3.458	3	3	100.00	1.32	
135	3.46	3	3	100.00	1.32	
136	3.485	3	3	100.00	1.32	
137	3.495	3	3	100.00	1.32	
138	3.515	3	3	100.00	1.32	
139	3.535	3	3	100.00	1.32	
140	3.536	3	3	100.00	1.32	
141	3.584	3	3	100.00	1.32	
142	3.619	3	3	100.00	1.32	
143	3.633	3	3	100.00	1.32	
144	3.663	3	3	100.00	1.32	
145	3.692	3	3	100.00	1.32	
146	3.724	3	3	100.00	1.32	
147	3.748	3	3	100.00	1.32	
148	3.852	3	3	100.00	1.32	
149	3.869	3	3	100.00	1.32	
150	3.964	3	3	100.00	1.32	
151	2.057	2	2	100.00	1.32	
152	2.09	2	2	100.00	1.32	
153	2.11	2	2	100.00	1.32	
154	2.125	2	2	100.00	1.32	
155	2.131	2	2	100.00	1.32	
156	2.15	2	2	100.00	1.32	

California State University, Stanislaus
Fall-to-spring GPA - 2nd term

Rank	Total		Number		Persistence	Lift
	Value	Number	Persisted	Rate (%)		
157	2.17	2	2	100.00	1.32	
158	2.183	2	2	100.00	1.32	
159	2.191	2	2	100.00	1.32	
160	2.232	2	2	100.00	1.32	
161	2.271	2	2	100.00	1.32	
162	2.288	2	2	100.00	1.32	
163	2.295	2	2	100.00	1.32	
164	2.308	2	2	100.00	1.32	
165	2.312	2	2	100.00	1.32	
166	2.319	2	2	100.00	1.32	
167	2.357	2	2	100.00	1.32	
168	2.38	2	2	100.00	1.32	
169	2.383	2	2	100.00	1.32	
170	2.409	2	2	100.00	1.32	
171	2.41	2	2	100.00	1.32	
172	2.413	2	2	100.00	1.32	
173	2.42	2	2	100.00	1.32	
174	2.438	2	2	100.00	1.32	
175	2.445	2	2	100.00	1.32	
176	2.467	2	2	100.00	1.32	
177	2.471	2	2	100.00	1.32	
178	2.486	2	2	100.00	1.32	
179	2.491	2	2	100.00	1.32	
180	2.504	2	2	100.00	1.32	
181	2.514	2	2	100.00	1.32	
182	2.52	2	2	100.00	1.32	
183	2.545	2	2	100.00	1.32	
184	2.555	2	2	100.00	1.32	
185	2.56	2	2	100.00	1.32	
186	2.564	2	2	100.00	1.32	
187	2.584	2	2	100.00	1.32	
188	2.589	2	2	100.00	1.32	
189	2.592	2	2	100.00	1.32	
190	2.636	2	2	100.00	1.32	
191	2.638	2	2	100.00	1.32	
192	2.64	2	2	100.00	1.32	
193	2.641	2	2	100.00	1.32	
194	2.646	2	2	100.00	1.32	
195	2.652	2	2	100.00	1.32	

California State University, Stanislaus
Fall-to-spring GPA - 2nd term

Rank	Value	Total	Number	Persistence	Lift
		Number	Persisted	Rate (%)	
196	2.694	2	2	100.00	1.32
197	2.709	2	2	100.00	1.32
198	2.712	2	2	100.00	1.32
199	2.725	2	2	100.00	1.32
200	2.739	2	2	100.00	1.32
201	2.743	2	2	100.00	1.32
202	2.747	2	2	100.00	1.32
203	2.754	2	2	100.00	1.32
204	2.756	2	2	100.00	1.32
205	2.765	2	2	100.00	1.32
206	2.769	2	2	100.00	1.32
207	2.776	2	2	100.00	1.32
208	2.778	2	2	100.00	1.32
209	2.786	2	2	100.00	1.32
210	2.827	2	2	100.00	1.32
211	2.836	2	2	100.00	1.32
212	2.837	2	2	100.00	1.32
213	2.877	2	2	100.00	1.32
214	2.889	2	2	100.00	1.32
215	2.894	2	2	100.00	1.32
216	2.917	2	2	100.00	1.32
217	2.923	2	2	100.00	1.32
218	2.926	2	2	100.00	1.32
219	2.928	2	2	100.00	1.32
220	2.929	2	2	100.00	1.32
221	2.94	2	2	100.00	1.32
222	2.941	2	2	100.00	1.32
223	2.944	2	2	100.00	1.32
224	2.947	2	2	100.00	1.32
225	2.957	2	2	100.00	1.32
226	2.96	2	2	100.00	1.32
227	2.962	2	2	100.00	1.32
228	2.965	2	2	100.00	1.32
229	2.968	2	2	100.00	1.32
230	2.971	2	2	100.00	1.32
231	2.979	2	2	100.00	1.32
232	2.989	2	2	100.00	1.32
233	2.991	2	2	100.00	1.32
234	3.011	2	2	100.00	1.32

California State University, Stanislaus
Fall-to-spring GPA - 2nd term

Rank	Total		Number		Persistence	
	Value	Number	Persisted	Rate (%)	Lift	
235	3.016	2	2	100.00	1.32	
236	3.023	2	2	100.00	1.32	
237	3.029	2	2	100.00	1.32	
238	3.041	2	2	100.00	1.32	
239	3.042	2	2	100.00	1.32	
240	3.045	2	2	100.00	1.32	
241	3.053	2	2	100.00	1.32	
242	3.067	2	2	100.00	1.32	
243	3.068	2	2	100.00	1.32	
244	3.07	2	2	100.00	1.32	
245	3.073	2	2	100.00	1.32	
246	3.074	2	2	100.00	1.32	
247	3.088	2	2	100.00	1.32	
248	3.089	2	2	100.00	1.32	
249	3.094	2	2	100.00	1.32	
250	3.112	2	2	100.00	1.32	
251	3.113	2	2	100.00	1.32	
252	3.115	2	2	100.00	1.32	
253	3.116	2	2	100.00	1.32	
254	3.117	2	2	100.00	1.32	
255	3.119	2	2	100.00	1.32	
256	3.123	2	2	100.00	1.32	
257	3.127	2	2	100.00	1.32	
258	3.137	2	2	100.00	1.32	
259	3.152	2	2	100.00	1.32	
260	3.154	2	2	100.00	1.32	
261	3.164	2	2	100.00	1.32	
262	3.17	2	2	100.00	1.32	
263	3.174	2	2	100.00	1.32	
264	3.18	2	2	100.00	1.32	
265	3.182	2	2	100.00	1.32	
266	3.193	2	2	100.00	1.32	
267	3.194	2	2	100.00	1.32	
268	3.195	2	2	100.00	1.32	
269	3.208	2	2	100.00	1.32	
270	3.211	2	2	100.00	1.32	
271	3.227	2	2	100.00	1.32	
272	3.238	2	2	100.00	1.32	
273	3.24	2	2	100.00	1.32	

California State University, Stanislaus
Fall-to-spring GPA - 2nd term

Rank	Total		Number		Persistence	
	Value	Number	Persisted	Rate (%)	Lift	
274	3.244	2	2	100.00	1.32	
275	3.255	2	2	100.00	1.32	
276	3.279	2	2	100.00	1.32	
277	3.282	2	2	100.00	1.32	
278	3.285	2	2	100.00	1.32	
279	3.289	2	2	100.00	1.32	
280	3.296	2	2	100.00	1.32	
281	3.304	2	2	100.00	1.32	
282	3.306	2	2	100.00	1.32	
283	3.309	2	2	100.00	1.32	
284	3.319	2	2	100.00	1.32	
285	3.32	2	2	100.00	1.32	
286	3.323	2	2	100.00	1.32	
287	3.324	2	2	100.00	1.32	
288	3.33	2	2	100.00	1.32	
289	3.373	2	2	100.00	1.32	
290	3.379	2	2	100.00	1.32	
291	3.409	2	2	100.00	1.32	
292	3.411	2	2	100.00	1.32	
293	3.422	2	2	100.00	1.32	
294	3.43	2	2	100.00	1.32	
295	3.436	2	2	100.00	1.32	
296	3.44	2	2	100.00	1.32	
297	3.465	2	2	100.00	1.32	
298	3.467	2	2	100.00	1.32	
299	3.474	2	2	100.00	1.32	
300	3.478	2	2	100.00	1.32	
301	3.482	2	2	100.00	1.32	
302	3.489	2	2	100.00	1.32	
303	3.492	2	2	100.00	1.32	
304	3.503	2	2	100.00	1.32	
305	3.504	2	2	100.00	1.32	
306	3.506	2	2	100.00	1.32	
307	3.509	2	2	100.00	1.32	
308	3.514	2	2	100.00	1.32	
309	3.517	2	2	100.00	1.32	
310	3.52	2	2	100.00	1.32	
311	3.532	2	2	100.00	1.32	
312	3.534	2	2	100.00	1.32	

California State University, Stanislaus
Fall-to-spring GPA - 2nd term

Rank	Value	Total	Number	Persistence	Lift
		Number	Persisted	Rate (%)	
313	3.542	2	2	100.00	1.32
314	3.554	2	2	100.00	1.32
315	3.563	2	2	100.00	1.32
316	3.569	2	2	100.00	1.32
317	3.571	2	2	100.00	1.32
318	3.596	2	2	100.00	1.32
319	3.604	2	2	100.00	1.32
320	3.607	2	2	100.00	1.32
321	3.617	2	2	100.00	1.32
322	3.621	2	2	100.00	1.32
323	3.623	2	2	100.00	1.32
324	3.642	2	2	100.00	1.32
325	3.676	2	2	100.00	1.32
326	3.679	2	2	100.00	1.32
327	3.68	2	2	100.00	1.32
328	3.681	2	2	100.00	1.32
329	3.684	2	2	100.00	1.32
330	3.72	2	2	100.00	1.32
331	3.723	2	2	100.00	1.32
332	3.725	2	2	100.00	1.32
333	3.732	2	2	100.00	1.32
334	3.739	2	2	100.00	1.32
335	3.744	2	2	100.00	1.32
336	3.754	2	2	100.00	1.32
337	3.757	2	2	100.00	1.32
338	3.764	2	2	100.00	1.32
339	3.765	2	2	100.00	1.32
340	3.771	2	2	100.00	1.32
341	3.774	2	2	100.00	1.32
342	3.785	2	2	100.00	1.32
343	3.786	2	2	100.00	1.32
344	3.787	2	2	100.00	1.32
345	3.796	2	2	100.00	1.32
346	3.808	2	2	100.00	1.32
347	3.822	2	2	100.00	1.32
348	3.823	2	2	100.00	1.32
349	3.86	2	2	100.00	1.32
350	3.862	2	2	100.00	1.32
351	3.875	2	2	100.00	1.32

California State University, Stanislaus
Fall-to-spring GPA - 2nd term

Rank	Value	Total	Number	Persistence	Lift
		Number	Persisted	Rate (%)	
352	3.876	2	2	100.00	1.32
353	3.88	2	2	100.00	1.32
354	3.918	2	2	100.00	1.32
355	3.928	2	2	100.00	1.32
356	3.936	2	2	100.00	1.32
357	3.959	2	2	100.00	1.32
358	3.965	2	2	100.00	1.32
359	3.968	2	2	100.00	1.32
360	0.65	1	1	100.00	1.32
361	1.138	1	1	100.00	1.32
362	1.22	1	1	100.00	1.32
363	1.486	1	1	100.00	1.32
364	1.493	1	1	100.00	1.32
365	1.52	1	1	100.00	1.32
366	1.543	1	1	100.00	1.32
367	1.571	1	1	100.00	1.32
368	1.61	1	1	100.00	1.32
369	1.618	1	1	100.00	1.32
370	1.633	1	1	100.00	1.32
371	1.681	1	1	100.00	1.32
372	1.685	1	1	100.00	1.32
373	1.688	1	1	100.00	1.32
374	1.713	1	1	100.00	1.32
375	1.715	1	1	100.00	1.32
376	1.724	1	1	100.00	1.32
377	1.743	1	1	100.00	1.32
378	1.754	1	1	100.00	1.32
379	1.769	1	1	100.00	1.32
380	1.808	1	1	100.00	1.32
381	1.809	1	1	100.00	1.32
382	1.813	1	1	100.00	1.32
383	1.829	1	1	100.00	1.32
384	1.846	1	1	100.00	1.32
385	1.856	1	1	100.00	1.32
386	1.857	1	1	100.00	1.32
387	1.863	1	1	100.00	1.32
388	1.877	1	1	100.00	1.32
389	1.881	1	1	100.00	1.32
390	1.923	1	1	100.00	1.32

California State University, Stanislaus
Fall-to-spring GPA - 2nd term

Rank	Value	Total	Number	Persistence	Lift
		Number	Persisted	Rate (%)	
391	1.943	1	1	100.00	1.32
392	1.963	1	1	100.00	1.32
393	1.971	1	1	100.00	1.32
394	1.992	1	1	100.00	1.32
395	1.994	1	1	100.00	1.32
396	1.996	1	1	100.00	1.32
397	2.016	1	1	100.00	1.32
398	2.017	1	1	100.00	1.32
399	2.021	1	1	100.00	1.32
400	2.04	1	1	100.00	1.32
401	2.042	1	1	100.00	1.32
402	2.045	1	1	100.00	1.32
403	2.046	1	1	100.00	1.32
404	2.048	1	1	100.00	1.32
405	2.056	1	1	100.00	1.32
406	2.064	1	1	100.00	1.32
407	2.068	1	1	100.00	1.32
408	2.069	1	1	100.00	1.32
409	2.07	1	1	100.00	1.32
410	2.072	1	1	100.00	1.32
411	2.077	1	1	100.00	1.32
412	2.085	1	1	100.00	1.32
413	2.093	1	1	100.00	1.32
414	2.095	1	1	100.00	1.32
415	2.115	1	1	100.00	1.32
416	2.132	1	1	100.00	1.32
417	2.135	1	1	100.00	1.32
418	2.136	1	1	100.00	1.32
419	2.138	1	1	100.00	1.32
420	2.144	1	1	100.00	1.32
421	2.157	1	1	100.00	1.32
422	2.162	1	1	100.00	1.32
423	2.165	1	1	100.00	1.32
424	2.171	1	1	100.00	1.32
425	2.186	1	1	100.00	1.32
426	2.189	1	1	100.00	1.32
427	2.207	1	1	100.00	1.32
428	2.208	1	1	100.00	1.32
429	2.211	1	1	100.00	1.32

California State University, Stanislaus
Fall-to-spring GPA - 2nd term

Rank	Value	Total	Number	Persistence	Lift
		Number	Persisted	Rate (%)	
430	2.214	1	1	100.00	1.32
431	2.225	1	1	100.00	1.32
432	2.236	1	1	100.00	1.32
433	2.24	1	1	100.00	1.32
434	2.244	1	1	100.00	1.32
435	2.247	1	1	100.00	1.32
436	2.254	1	1	100.00	1.32
437	2.265	1	1	100.00	1.32
438	2.268	1	1	100.00	1.32
439	2.274	1	1	100.00	1.32
440	2.277	1	1	100.00	1.32
441	2.284	1	1	100.00	1.32
442	2.285	1	1	100.00	1.32
443	2.286	1	1	100.00	1.32
444	2.292	1	1	100.00	1.32
445	2.304	1	1	100.00	1.32
446	2.305	1	1	100.00	1.32
447	2.31	1	1	100.00	1.32
448	2.313	1	1	100.00	1.32
449	2.314	1	1	100.00	1.32
450	2.32	1	1	100.00	1.32
451	2.323	1	1	100.00	1.32
452	2.324	1	1	100.00	1.32
453	2.326	1	1	100.00	1.32
454	2.327	1	1	100.00	1.32
455	2.329	1	1	100.00	1.32
456	2.33	1	1	100.00	1.32
457	2.346	1	1	100.00	1.32
458	2.355	1	1	100.00	1.32
459	2.359	1	1	100.00	1.32
460	2.367	1	1	100.00	1.32
461	2.39	1	1	100.00	1.32
462	2.392	1	1	100.00	1.32
463	2.414	1	1	100.00	1.32
464	2.415	1	1	100.00	1.32
465	2.418	1	1	100.00	1.32
466	2.421	1	1	100.00	1.32
467	2.432	1	1	100.00	1.32
468	2.437	1	1	100.00	1.32

California State University, Stanislaus
Fall-to-spring GPA - 2nd term

Rank	Value	Total	Number	Persistence	Lift
		Number	Persisted	Rate (%)	
469	2.454	1	1	100.00	1.32
470	2.461	1	1	100.00	1.32
471	2.464	1	1	100.00	1.32
472	2.465	1	1	100.00	1.32
473	2.469	1	1	100.00	1.32
474	2.474	1	1	100.00	1.32
475	2.488	1	1	100.00	1.32
476	2.489	1	1	100.00	1.32
477	2.496	1	1	100.00	1.32
478	2.505	1	1	100.00	1.32
479	2.506	1	1	100.00	1.32
480	2.512	1	1	100.00	1.32
481	2.516	1	1	100.00	1.32
482	2.521	1	1	100.00	1.32
483	2.524	1	1	100.00	1.32
484	2.525	1	1	100.00	1.32
485	2.526	1	1	100.00	1.32
486	2.53	1	1	100.00	1.32
487	2.535	1	1	100.00	1.32
488	2.541	1	1	100.00	1.32
489	2.542	1	1	100.00	1.32
490	2.559	1	1	100.00	1.32
491	2.568	1	1	100.00	1.32
492	2.579	1	1	100.00	1.32
493	2.582	1	1	100.00	1.32
494	2.585	1	1	100.00	1.32
495	2.587	1	1	100.00	1.32
496	2.59	1	1	100.00	1.32
497	2.608	1	1	100.00	1.32
498	2.613	1	1	100.00	1.32
499	2.62	1	1	100.00	1.32
500	2.624	1	1	100.00	1.32
501	2.627	1	1	100.00	1.32
502	2.63	1	1	100.00	1.32
503	2.647	1	1	100.00	1.32
504	2.648	1	1	100.00	1.32
505	2.654	1	1	100.00	1.32
506	2.655	1	1	100.00	1.32
507	2.656	1	1	100.00	1.32

California State University, Stanislaus
Fall-to-spring GPA - 2nd term

Rank	Value	Total	Number	Persistence	Lift
		Number	Persisted	Rate (%)	
508	2.658	1	1	100.00	1.32
509	2.664	1	1	100.00	1.32
510	2.668	1	1	100.00	1.32
511	2.67	1	1	100.00	1.32
512	2.672	1	1	100.00	1.32
513	2.673	1	1	100.00	1.32
514	2.674	1	1	100.00	1.32
515	2.681	1	1	100.00	1.32
516	2.683	1	1	100.00	1.32
517	2.686	1	1	100.00	1.32
518	2.69	1	1	100.00	1.32
519	2.691	1	1	100.00	1.32
520	2.693	1	1	100.00	1.32
521	2.696	1	1	100.00	1.32
522	2.708	1	1	100.00	1.32
523	2.71	1	1	100.00	1.32
524	2.711	1	1	100.00	1.32
525	2.716	1	1	100.00	1.32
526	2.718	1	1	100.00	1.32
527	2.719	1	1	100.00	1.32
528	2.724	1	1	100.00	1.32
529	2.729	1	1	100.00	1.32
530	2.73	1	1	100.00	1.32
531	2.734	1	1	100.00	1.32
532	2.735	1	1	100.00	1.32
533	2.736	1	1	100.00	1.32
534	2.741	1	1	100.00	1.32
535	2.744	1	1	100.00	1.32
536	2.748	1	1	100.00	1.32
537	2.752	1	1	100.00	1.32
538	2.76	1	1	100.00	1.32
539	2.761	1	1	100.00	1.32
540	2.764	1	1	100.00	1.32
541	2.773	1	1	100.00	1.32
542	2.774	1	1	100.00	1.32
543	2.781	1	1	100.00	1.32
544	2.788	1	1	100.00	1.32
545	2.795	1	1	100.00	1.32
546	2.797	1	1	100.00	1.32

California State University, Stanislaus
Fall-to-spring GPA - 2nd term

Rank	Value	Total	Number	Persistence	Lift
		Number	Persisted	Rate (%)	
547	2.806	1	1	100.00	1.32
548	2.808	1	1	100.00	1.32
549	2.811	1	1	100.00	1.32
550	2.816	1	1	100.00	1.32
551	2.822	1	1	100.00	1.32
552	2.828	1	1	100.00	1.32
553	2.835	1	1	100.00	1.32
554	2.838	1	1	100.00	1.32
555	2.84	1	1	100.00	1.32
556	2.847	1	1	100.00	1.32
557	2.852	1	1	100.00	1.32
558	2.853	1	1	100.00	1.32
559	2.854	1	1	100.00	1.32
560	2.855	1	1	100.00	1.32
561	2.861	1	1	100.00	1.32
562	2.863	1	1	100.00	1.32
563	2.876	1	1	100.00	1.32
564	2.878	1	1	100.00	1.32
565	2.89	1	1	100.00	1.32
566	2.896	1	1	100.00	1.32
567	2.904	1	1	100.00	1.32
568	2.909	1	1	100.00	1.32
569	2.922	1	1	100.00	1.32
570	2.924	1	1	100.00	1.32
571	2.933	1	1	100.00	1.32
572	2.935	1	1	100.00	1.32
573	2.937	1	1	100.00	1.32
574	2.938	1	1	100.00	1.32
575	2.946	1	1	100.00	1.32
576	2.955	1	1	100.00	1.32
577	2.958	1	1	100.00	1.32
578	2.966	1	1	100.00	1.32
579	2.967	1	1	100.00	1.32
580	2.973	1	1	100.00	1.32
581	2.977	1	1	100.00	1.32
582	3.005	1	1	100.00	1.32
583	3.006	1	1	100.00	1.32
584	3.007	1	1	100.00	1.32
585	3.009	1	1	100.00	1.32

California State University, Stanislaus
Fall-to-spring GPA - 2nd term

Rank	Total		Number		Persistence	
	Value	Number	Persisted	Rate (%)	Lift	
586	3.022	1	1	100.00	1.32	
587	3.024	1	1	100.00	1.32	
588	3.028	1	1	100.00	1.32	
589	3.03	1	1	100.00	1.32	
590	3.032	1	1	100.00	1.32	
591	3.035	1	1	100.00	1.32	
592	3.036	1	1	100.00	1.32	
593	3.037	1	1	100.00	1.32	
594	3.047	1	1	100.00	1.32	
595	3.052	1	1	100.00	1.32	
596	3.058	1	1	100.00	1.32	
597	3.064	1	1	100.00	1.32	
598	3.065	1	1	100.00	1.32	
599	3.071	1	1	100.00	1.32	
600	3.076	1	1	100.00	1.32	
601	3.085	1	1	100.00	1.32	
602	3.087	1	1	100.00	1.32	
603	3.104	1	1	100.00	1.32	
604	3.109	1	1	100.00	1.32	
605	3.11	1	1	100.00	1.32	
606	3.128	1	1	100.00	1.32	
607	3.13	1	1	100.00	1.32	
608	3.131	1	1	100.00	1.32	
609	3.132	1	1	100.00	1.32	
610	3.144	1	1	100.00	1.32	
611	3.146	1	1	100.00	1.32	
612	3.147	1	1	100.00	1.32	
613	3.155	1	1	100.00	1.32	
614	3.165	1	1	100.00	1.32	
615	3.166	1	1	100.00	1.32	
616	3.171	1	1	100.00	1.32	
617	3.181	1	1	100.00	1.32	
618	3.185	1	1	100.00	1.32	
619	3.188	1	1	100.00	1.32	
620	3.196	1	1	100.00	1.32	
621	3.206	1	1	100.00	1.32	
622	3.207	1	1	100.00	1.32	
623	3.209	1	1	100.00	1.32	
624	3.214	1	1	100.00	1.32	

California State University, Stanislaus
Fall-to-spring GPA - 2nd term

Rank	Value	Total	Number	Persistence	Lift
		Number	Persisted	Rate (%)	
625	3.215	1	1	100.00	1.32
626	3.222	1	1	100.00	1.32
627	3.229	1	1	100.00	1.32
628	3.23	1	1	100.00	1.32
629	3.231	1	1	100.00	1.32
630	3.251	1	1	100.00	1.32
631	3.258	1	1	100.00	1.32
632	3.262	1	1	100.00	1.32
633	3.263	1	1	100.00	1.32
634	3.265	1	1	100.00	1.32
635	3.267	1	1	100.00	1.32
636	3.268	1	1	100.00	1.32
637	3.269	1	1	100.00	1.32
638	3.272	1	1	100.00	1.32
639	3.292	1	1	100.00	1.32
640	3.294	1	1	100.00	1.32
641	3.297	1	1	100.00	1.32
642	3.303	1	1	100.00	1.32
643	3.311	1	1	100.00	1.32
644	3.321	1	1	100.00	1.32
645	3.327	1	1	100.00	1.32
646	3.337	1	1	100.00	1.32
647	3.345	1	1	100.00	1.32
648	3.346	1	1	100.00	1.32
649	3.353	1	1	100.00	1.32
650	3.354	1	1	100.00	1.32
651	3.358	1	1	100.00	1.32
652	3.359	1	1	100.00	1.32
653	3.363	1	1	100.00	1.32
654	3.369	1	1	100.00	1.32
655	3.371	1	1	100.00	1.32
656	3.372	1	1	100.00	1.32
657	3.374	1	1	100.00	1.32
658	3.376	1	1	100.00	1.32
659	3.381	1	1	100.00	1.32
660	3.383	1	1	100.00	1.32
661	3.385	1	1	100.00	1.32
662	3.389	1	1	100.00	1.32
663	3.391	1	1	100.00	1.32

California State University, Stanislaus
Fall-to-spring GPA - 2nd term

Rank	Value	Total	Number	Persistence	Lift
		Number	Persisted	Rate (%)	
664	3.393	1	1	100.00	1.32
665	3.394	1	1	100.00	1.32
666	3.407	1	1	100.00	1.32
667	3.413	1	1	100.00	1.32
668	3.415	1	1	100.00	1.32
669	3.42	1	1	100.00	1.32
670	3.423	1	1	100.00	1.32
671	3.426	1	1	100.00	1.32
672	3.431	1	1	100.00	1.32
673	3.435	1	1	100.00	1.32
674	3.438	1	1	100.00	1.32
675	3.442	1	1	100.00	1.32
676	3.453	1	1	100.00	1.32
677	3.455	1	1	100.00	1.32
678	3.456	1	1	100.00	1.32
679	3.459	1	1	100.00	1.32
680	3.462	1	1	100.00	1.32
681	3.472	1	1	100.00	1.32
682	3.476	1	1	100.00	1.32
683	3.479	1	1	100.00	1.32
684	3.48	1	1	100.00	1.32
685	3.484	1	1	100.00	1.32
686	3.488	1	1	100.00	1.32
687	3.494	1	1	100.00	1.32
688	3.508	1	1	100.00	1.32
689	3.51	1	1	100.00	1.32
690	3.511	1	1	100.00	1.32
691	3.513	1	1	100.00	1.32
692	3.516	1	1	100.00	1.32
693	3.518	1	1	100.00	1.32
694	3.528	1	1	100.00	1.32
695	3.539	1	1	100.00	1.32
696	3.544	1	1	100.00	1.32
697	3.545	1	1	100.00	1.32
698	3.552	1	1	100.00	1.32
699	3.559	1	1	100.00	1.32
700	3.564	1	1	100.00	1.32
701	3.568	1	1	100.00	1.32
702	3.57	1	1	100.00	1.32

California State University, Stanislaus
Fall-to-spring GPA - 2nd term

Rank	Value	Total	Number	Persistence	Lift
		Number	Persisted	Rate (%)	
703	3.572	1	1	100.00	1.32
704	3.574	1	1	100.00	1.32
705	3.58	1	1	100.00	1.32
706	3.581	1	1	100.00	1.32
707	3.582	1	1	100.00	1.32
708	3.587	1	1	100.00	1.32
709	3.609	1	1	100.00	1.32
710	3.612	1	1	100.00	1.32
711	3.614	1	1	100.00	1.32
712	3.615	1	1	100.00	1.32
713	3.618	1	1	100.00	1.32
714	3.622	1	1	100.00	1.32
715	3.624	1	1	100.00	1.32
716	3.627	1	1	100.00	1.32
717	3.632	1	1	100.00	1.32
718	3.639	1	1	100.00	1.32
719	3.647	1	1	100.00	1.32
720	3.648	1	1	100.00	1.32
721	3.653	1	1	100.00	1.32
722	3.659	1	1	100.00	1.32
723	3.66	1	1	100.00	1.32
724	3.661	1	1	100.00	1.32
725	3.662	1	1	100.00	1.32
726	3.665	1	1	100.00	1.32
727	3.671	1	1	100.00	1.32
728	3.673	1	1	100.00	1.32
729	3.686	1	1	100.00	1.32
730	3.687	1	1	100.00	1.32
731	3.694	1	1	100.00	1.32
732	3.696	1	1	100.00	1.32
733	3.713	1	1	100.00	1.32
734	3.716	1	1	100.00	1.32
735	3.721	1	1	100.00	1.32
736	3.73	1	1	100.00	1.32
737	3.731	1	1	100.00	1.32
738	3.735	1	1	100.00	1.32
739	3.736	1	1	100.00	1.32
740	3.737	1	1	100.00	1.32
741	3.742	1	1	100.00	1.32

California State University, Stanislaus
Fall-to-spring GPA - 2nd term

Rank	Value	Total	Number	Persistence	Lift
		Number	Persisted	Rate (%)	
742	3.752	1	1	100.00	1.32
743	3.767	1	1	100.00	1.32
744	3.775	1	1	100.00	1.32
745	3.779	1	1	100.00	1.32
746	3.783	1	1	100.00	1.32
747	3.788	1	1	100.00	1.32
748	3.79	1	1	100.00	1.32
749	3.803	1	1	100.00	1.32
750	3.811	1	1	100.00	1.32
751	3.813	1	1	100.00	1.32
752	3.815	1	1	100.00	1.32
753	3.824	1	1	100.00	1.32
754	3.831	1	1	100.00	1.32
755	3.835	1	1	100.00	1.32
756	3.837	1	1	100.00	1.32
757	3.841	1	1	100.00	1.32
758	3.845	1	1	100.00	1.32
759	3.856	1	1	100.00	1.32
760	3.857	1	1	100.00	1.32
761	3.882	1	1	100.00	1.32
762	3.883	1	1	100.00	1.32
763	3.885	1	1	100.00	1.32
764	3.886	1	1	100.00	1.32
765	3.888	1	1	100.00	1.32
766	3.891	1	1	100.00	1.32
767	3.897	1	1	100.00	1.32
768	3.9	1	1	100.00	1.32
769	3.903	1	1	100.00	1.32
770	3.908	1	1	100.00	1.32
771	3.91	1	1	100.00	1.32
772	3.913	1	1	100.00	1.32
773	3.919	1	1	100.00	1.32
774	3.93	1	1	100.00	1.32
775	3.932	1	1	100.00	1.32
776	3.933	1	1	100.00	1.32
777	3.938	1	1	100.00	1.32
778	3.944	1	1	100.00	1.32
779	3.953	1	1	100.00	1.32
780	3.954	1	1	100.00	1.32

California State University, Stanislaus
Fall-to-spring GPA - 2nd term

Rank	Value	Total	Number	Persistence	Lift
		Number	Persisted	Rate (%)	
781	3.955	1	1	100.00	1.32
782	3.957	1	1	100.00	1.32
783	3.96	1	1	100.00	1.32
784	3.967	1	1	100.00	1.32
785	3.969	1	1	100.00	1.32
786	3.975	1	1	100.00	1.32
787	3.989	1	1	100.00	1.32
788	3.175	23	22	95.65	1.27
789	2.925	14	13	92.86	1.23
790	3.75	14	13	92.86	1.23
791	3.333	12	11	91.67	1.21
792	2.675	10	9	90.00	1.19
793	3.49	10	9	90.00	1.19
794	3.769	10	9	90.00	1.19
795	4	56	50	89.29	1.18
796	2.433	9	8	88.89	1.18
797	2.567	9	8	88.89	1.18
798	2.6	9	8	88.89	1.18
799	2.95	9	8	88.89	1.18
800	3.077	9	8	88.89	1.18
801	3.143	9	8	88.89	1.18
802	3.34	9	8	88.89	1.18
803	3.446	9	8	88.89	1.18
804	2.963	8	7	87.50	1.16
805	3.6	8	7	87.50	1.16
806	3.675	8	7	87.50	1.16
807	3.3	22	19	86.36	1.14
808	2.425	7	6	85.71	1.13
809	3.5	26	22	84.62	1.12
810	3.4	30	25	83.33	1.10
811	2.75	12	10	83.33	1.10
812	2.85	12	10	83.33	1.10
813	2.455	6	5	83.33	1.10
814	2.48	6	5	83.33	1.10
815	2.714	6	5	83.33	1.10
816	2.762	6	5	83.33	1.10
817	2.88	6	5	83.33	1.10
818	3.12	6	5	83.33	1.10
819	3.138	6	5	83.33	1.10

California State University, Stanislaus
Fall-to-spring GPA - 2nd term

Rank	Value	Total	Number	Persistence	Lift
		Number	Persisted	Rate (%)	
820	3.15	6	5	83.33	1.10
821	3.308	6	5	83.33	1.10
822	3.343	6	5	83.33	1.10
823	3.429	6	5	83.33	1.10
824	3.7	23	19	82.61	1.09
825	3.1	27	22	81.48	1.08
826	2.9	16	13	81.25	1.07
827	3.325	20	16	80.00	1.06
828	2.7	10	8	80.00	1.06
829	3.233	10	8	80.00	1.06
830	2.167	5	4	80.00	1.06
831	2.3	5	4	80.00	1.06
832	2.479	5	4	80.00	1.06
833	2.768	5	4	80.00	1.06
834	2.959	5	4	80.00	1.06
835	2.984	5	4	80.00	1.06
836	3.186	5	4	80.00	1.06
837	3.368	5	4	80.00	1.06
838	3.433	5	4	80.00	1.06
839	3.65	5	4	80.00	1.06
840	3	68	54	79.41	1.05
841	2.25	9	7	77.78	1.03
842	2.767	9	7	77.78	1.03
843	2.4	13	10	76.92	1.02
844	3.2	13	10	76.92	1.02
845	3.85	13	10	76.92	1.02
846	2.8	17	13	76.47	1.01
847	1.777	4	3	75.00	0.99
848	1.825	4	3	75.00	0.99
849	2.238	4	3	75.00	0.99
850	2.34	4	3	75.00	0.99
851	2.61	4	3	75.00	0.99
852	2.625	4	3	75.00	0.99
853	2.775	4	3	75.00	0.99
854	2.844	4	3	75.00	0.99
855	2.87	4	3	75.00	0.99
856	2.914	4	3	75.00	0.99
857	3.015	4	3	75.00	0.99
858	3.02	4	3	75.00	0.99

California State University, Stanislaus
Fall-to-spring GPA - 2nd term

Rank	Value	Total	Number	Persistence	Lift
		Number	Persisted	Rate (%)	
859	3.043	4	3	75.00	0.99
860	3.069	4	3	75.00	0.99
861	3.213	4	3	75.00	0.99
862	3.223	4	3	75.00	0.99
863	3.225	4	3	75.00	0.99
864	3.26	4	3	75.00	0.99
865	3.273	4	3	75.00	0.99
866	3.316	4	3	75.00	0.99
867	3.375	4	3	75.00	0.99
868	3.448	4	3	75.00	0.99
869	3.505	4	3	75.00	0.99
870	3.55	4	3	75.00	0.99
871	3.586	4	3	75.00	0.99
872	2.325	11	8	72.73	0.96
873	3.925	11	8	72.73	0.96
874	3.25	21	15	71.43	0.94
875	2.45	7	5	71.43	0.94
876	3.177	7	5	71.43	0.94
877	3.286	7	5	71.43	0.94
878	3.425	17	12	70.59	0.93
879	2.5	23	16	69.57	0.92
880	3.075	12	8	66.67	0.88
881	2.617	6	4	66.67	0.88
882	2.867	6	4	66.67	0.88
883	3.055	6	4	66.67	0.88
884	3.35	6	4	66.67	0.88
885	3.414	6	4	66.67	0.88
886	3.825	6	4	66.67	0.88
887	1.2	3	2	66.67	0.88
888	1.615	3	2	66.67	0.88
889	1.7	3	2	66.67	0.88
890	1.71	3	2	66.67	0.88
891	1.913	3	2	66.67	0.88
892	1.931	3	2	66.67	0.88
893	1.95	3	2	66.67	0.88
894	1.99	3	2	66.67	0.88
895	2.01	3	2	66.67	0.88
896	2.14	3	2	66.67	0.88
897	2.143	3	2	66.67	0.88

California State University, Stanislaus
Fall-to-spring GPA - 2nd term

Rank	Value	Total Number	Number Persisted	Persistence Rate (%)	Lift
898	2.158	3	2	66.67	0.88
899	2.19	3	2	66.67	0.88
900	2.217	3	2	66.67	0.88
901	2.243	3	2	66.67	0.88
902	2.26	3	2	66.67	0.88
903	2.343	3	2	66.67	0.88
904	2.36	3	2	66.67	0.88
905	2.429	3	2	66.67	0.88
906	2.443	3	2	66.67	0.88
907	2.446	3	2	66.67	0.88
908	2.49	3	2	66.67	0.88
909	2.517	3	2	66.67	0.88
910	2.531	3	2	66.67	0.88
911	2.54	3	2	66.67	0.88
912	2.66	3	2	66.67	0.88
913	2.688	3	2	66.67	0.88
914	2.692	3	2	66.67	0.88
915	2.72	3	2	66.67	0.88
916	2.732	3	2	66.67	0.88
917	2.783	3	2	66.67	0.88
918	2.81	3	2	66.67	0.88
919	2.813	3	2	66.67	0.88
920	2.823	3	2	66.67	0.88
921	2.875	3	2	66.67	0.88
922	2.913	3	2	66.67	0.88
923	2.97	3	2	66.67	0.88
924	2.988	3	2	66.67	0.88
925	3.013	3	2	66.67	0.88
926	3.04	3	2	66.67	0.88
927	3.095	3	2	66.67	0.88
928	3.136	3	2	66.67	0.88
929	3.178	3	2	66.67	0.88
930	3.189	3	2	66.67	0.88
931	3.204	3	2	66.67	0.88
932	3.21	3	2	66.67	0.88
933	3.217	3	2	66.67	0.88
934	3.264	3	2	66.67	0.88
935	3.318	3	2	66.67	0.88
936	3.39	3	2	66.67	0.88

California State University, Stanislaus
Fall-to-spring GPA - 2nd term

Rank	Total		Number		Persistence	
	Value	Number	Persisted	Rate (%)	Lift	
937	3.427	3	2	66.67	0.88	
938	3.441	3	2	66.67	0.88	
939	3.471	3	2	66.67	0.88	
940	3.507	3	2	66.67	0.88	
941	3.556	3	2	66.67	0.88	
942	3.629	3	2	66.67	0.88	
943	3.768	3	2	66.67	0.88	
944	3.829	3	2	66.67	0.88	
945	2	34	22	64.71	0.86	
946	2.333	17	11	64.71	0.86	
947	1.9	11	7	63.64	0.84	
948	2.1	11	7	63.64	0.84	
949	2.175	11	7	63.64	0.84	
950	2.075	8	5	62.50	0.83	
951	2.667	13	8	61.54	0.81	
952	2.825	10	6	60.00	0.79	
953	2.571	5	3	60.00	0.79	
954	2.833	5	3	60.00	0.79	
955	2.931	5	3	60.00	0.79	
956	3.377	5	3	60.00	0.79	
957	3.463	5	3	60.00	0.79	
958	2.35	12	7	58.33	0.77	
959	2.575	9	5	55.56	0.73	
960	1.5	8	4	50.00	0.66	
961	2.233	8	4	50.00	0.66	
962	1.8	6	3	50.00	0.66	
963	1.925	4	2	50.00	0.66	
964	3.122	4	2	50.00	0.66	
965	3.232	4	2	50.00	0.66	
966	3.714	4	2	50.00	0.66	
967	3.74	4	2	50.00	0.66	
968	1.1	2	1	50.00	0.66	
969	1.429	2	1	50.00	0.66	
970	1.81	2	1	50.00	0.66	
971	1.831	2	1	50.00	0.66	
972	1.862	2	1	50.00	0.66	
973	1.871	2	1	50.00	0.66	
974	1.88	2	1	50.00	0.66	
975	1.915	2	1	50.00	0.66	

California State University, Stanislaus
Fall-to-spring GPA - 2nd term

Rank	Total		Number		Persistence	
	Value	Number	Persisted	Rate (%)	Lift	
976	2.008	2	1	50.00	0.66	
977	2.025	2	1	50.00	0.66	
978	2.08	2	1	50.00	0.66	
979	2.105	2	1	50.00	0.66	
980	2.12	2	1	50.00	0.66	
981	2.133	2	1	50.00	0.66	
982	2.154	2	1	50.00	0.66	
983	2.163	2	1	50.00	0.66	
984	2.18	2	1	50.00	0.66	
985	2.229	2	1	50.00	0.66	
986	2.253	2	1	50.00	0.66	
987	2.256	2	1	50.00	0.66	
988	2.267	2	1	50.00	0.66	
989	2.273	2	1	50.00	0.66	
990	2.377	2	1	50.00	0.66	
991	2.386	2	1	50.00	0.66	
992	2.448	2	1	50.00	0.66	
993	2.456	2	1	50.00	0.66	
994	2.468	2	1	50.00	0.66	
995	2.495	2	1	50.00	0.66	
996	2.51	2	1	50.00	0.66	
997	2.523	2	1	50.00	0.66	
998	2.528	2	1	50.00	0.66	
999	2.557	2	1	50.00	0.66	
1000	2.561	2	1	50.00	0.66	
1001	2.574	2	1	50.00	0.66	
1002	2.611	2	1	50.00	0.66	
1003	2.615	2	1	50.00	0.66	
1004	2.633	2	1	50.00	0.66	
1005	2.653	2	1	50.00	0.66	
1006	2.677	2	1	50.00	0.66	
1007	2.717	2	1	50.00	0.66	
1008	2.757	2	1	50.00	0.66	
1009	2.779	2	1	50.00	0.66	
1010	2.78	2	1	50.00	0.66	
1011	2.859	2	1	50.00	0.66	
1012	2.864	2	1	50.00	0.66	
1013	2.868	2	1	50.00	0.66	
1014	2.91	2	1	50.00	0.66	

California State University, Stanislaus
Fall-to-spring GPA - 2nd term

Rank	Value	Total	Number	Persistence	Lift
		Number	Persisted	Rate (%)	
1015	2.93	2	1	50.00	0.66
1016	2.932	2	1	50.00	0.66
1017	2.942	2	1	50.00	0.66
1018	2.952	2	1	50.00	0.66
1019	3.01	2	1	50.00	0.66
1020	3.046	2	1	50.00	0.66
1021	3.056	2	1	50.00	0.66
1022	3.105	2	1	50.00	0.66
1023	3.139	2	1	50.00	0.66
1024	3.216	2	1	50.00	0.66
1025	3.241	2	1	50.00	0.66
1026	3.261	2	1	50.00	0.66
1027	3.28	2	1	50.00	0.66
1028	3.36	2	1	50.00	0.66
1029	3.388	2	1	50.00	0.66
1030	3.41	2	1	50.00	0.66
1031	3.416	2	1	50.00	0.66
1032	3.421	2	1	50.00	0.66
1033	3.432	2	1	50.00	0.66
1034	3.522	2	1	50.00	0.66
1035	3.527	2	1	50.00	0.66
1036	3.56	2	1	50.00	0.66
1037	3.573	2	1	50.00	0.66
1038	3.589	2	1	50.00	0.66
1039	3.658	2	1	50.00	0.66
1040	3.727	2	1	50.00	0.66
1041	3.8	2	1	50.00	0.66
1042	3.893	2	1	50.00	0.66
1043	1.667	7	3	42.86	0.57
1044	2.2	7	3	42.86	0.57
1045	1.85	10	4	40.00	0.53
1046	1.75	5	2	40.00	0.53
1047	1.075	3	1	33.33	0.44
1048	1.833	3	1	33.33	0.44
1049	2.283	3	1	33.33	0.44
1050	2.533	3	1	33.33	0.44
1051	2.573	3	1	33.33	0.44
1052	2.679	3	1	33.33	0.44
1053	2.821	3	1	33.33	0.44

California State University, Stanislaus
Fall-to-spring GPA - 2nd term

Rank	Total		Number		Persistence	
	Value	Number	Persisted	Rate (%)	Lift	
1054	3.014	3	1	33.33	0.44	
1055	3.277	3	1	33.33	0.44	
1056	3.367	3	1	33.33	0.44	
1057	3.533	3	1	33.33	0.44	
1058	1.575	4	1	25.00	0.33	
1059	2.06	4	1	25.00	0.33	
1060	2.246	4	1	25.00	0.33	
1061	1	12	2	16.67	0.22	
1062	0	43	0	0.00	0.00	
1063	0.925	6	0	0.00	0.00	
1064	0.25	5	0	0.00	0.00	
1065	0.5	5	0	0.00	0.00	
1066	0.75	5	0	0.00	0.00	
1067	1.333	4	0	0.00	0.00	
1068	1.48	4	0	0.00	0.00	
1069	1.6	4	0	0.00	0.00	
1070	0.567	3	0	0.00	0.00	
1071	0.571	3	0	0.00	0.00	
1072	0.667	3	0	0.00	0.00	
1073	0.8	3	0	0.00	0.00	
1074	0.825	3	0	0.00	0.00	
1075	0.9	3	0	0.00	0.00	
1076	1.15	3	0	0.00	0.00	
1077	1.167	3	0	0.00	0.00	
1078	1.233	3	0	0.00	0.00	
1079	1.34	3	0	0.00	0.00	
1080	1.425	3	0	0.00	0.00	
1081	1.671	3	0	0.00	0.00	
1082	0.233	2	0	0.00	0.00	
1083	0.286	2	0	0.00	0.00	
1084	0.333	2	0	0.00	0.00	
1085	0.46	2	0	0.00	0.00	
1086	0.6	2	0	0.00	0.00	
1087	0.623	2	0	0.00	0.00	
1088	0.854	2	0	0.00	0.00	
1089	0.869	2	0	0.00	0.00	
1090	0.883	2	0	0.00	0.00	
1091	0.95	2	0	0.00	0.00	
1092	0.955	2	0	0.00	0.00	

California State University, Stanislaus
Fall-to-spring GPA - 2nd term

Rank	Total		Number		Persistence	
	Value	Number	Persisted	Rate (%)	Lift	
1093	1.05	2	0	0.00	0.00	
1094	1.14	2	0	0.00	0.00	
1095	1.213	2	0	0.00	0.00	
1096	1.246	2	0	0.00	0.00	
1097	1.325	2	0	0.00	0.00	
1098	1.375	2	0	0.00	0.00	
1099	1.4	2	0	0.00	0.00	
1100	1.404	2	0	0.00	0.00	
1101	1.477	2	0	0.00	0.00	
1102	1.567	2	0	0.00	0.00	
1103	1.614	2	0	0.00	0.00	
1104	1.714	2	0	0.00	0.00	
1105	1.717	2	0	0.00	0.00	
1106	1.767	2	0	0.00	0.00	
1107	1.92	2	0	0.00	0.00	
1108	2.263	2	0	0.00	0.00	
1109	2.29	2	0	0.00	0.00	
1110	2.315	2	0	0.00	0.00	
1111	2.482	2	0	0.00	0.00	
1112	2.956	2	0	0.00	0.00	
1113	3.362	2	0	0.00	0.00	
1114	3.529	2	0	0.00	0.00	
1115	0.111	1	0	0.00	0.00	
1116	0.163	1	0	0.00	0.00	
1117	0.2	1	0	0.00	0.00	
1118	0.221	1	0	0.00	0.00	
1119	0.231	1	0	0.00	0.00	
1120	0.3	1	0	0.00	0.00	
1121	0.321	1	0	0.00	0.00	
1122	0.4	1	0	0.00	0.00	
1123	0.409	1	0	0.00	0.00	
1124	0.425	1	0	0.00	0.00	
1125	0.433	1	0	0.00	0.00	
1126	0.45	1	0	0.00	0.00	
1127	0.538	1	0	0.00	0.00	
1128	0.554	1	0	0.00	0.00	
1129	0.586	1	0	0.00	0.00	
1130	0.617	1	0	0.00	0.00	
1131	0.632	1	0	0.00	0.00	

California State University, Stanislaus
Fall-to-spring GPA - 2nd term

Rank	Value	Total	Number	Persistence	Lift
		Number	Persisted	Rate (%)	
1132	0.652	1	0	0.00	0.00
1133	0.66	1	0	0.00	0.00
1134	0.692	1	0	0.00	0.00
1135	0.733	1	0	0.00	0.00
1136	0.74	1	0	0.00	0.00
1137	0.767	1	0	0.00	0.00
1138	0.775	1	0	0.00	0.00
1139	0.81	1	0	0.00	0.00
1140	0.814	1	0	0.00	0.00
1141	0.822	1	0	0.00	0.00
1142	0.827	1	0	0.00	0.00
1143	0.829	1	0	0.00	0.00
1144	0.833	1	0	0.00	0.00
1145	0.84	1	0	0.00	0.00
1146	0.859	1	0	0.00	0.00
1147	0.867	1	0	0.00	0.00
1148	0.908	1	0	0.00	0.00
1149	0.92	1	0	0.00	0.00
1150	0.923	1	0	0.00	0.00
1151	0.938	1	0	0.00	0.00
1152	0.94	1	0	0.00	0.00
1153	0.947	1	0	0.00	0.00
1154	0.953	1	0	0.00	0.00
1155	0.982	1	0	0.00	0.00
1156	0.995	1	0	0.00	0.00
1157	1.006	1	0	0.00	0.00
1158	1.009	1	0	0.00	0.00
1159	1.02	1	0	0.00	0.00
1160	1.036	1	0	0.00	0.00
1161	1.043	1	0	0.00	0.00
1162	1.045	1	0	0.00	0.00
1163	1.053	1	0	0.00	0.00
1164	1.056	1	0	0.00	0.00
1165	1.063	1	0	0.00	0.00
1166	1.077	1	0	0.00	0.00
1167	1.085	1	0	0.00	0.00
1168	1.089	1	0	0.00	0.00
1169	1.111	1	0	0.00	0.00
1170	1.117	1	0	0.00	0.00

California State University, Stanislaus
Fall-to-spring GPA - 2nd term

Rank	Value	Total	Number	Persistence	Lift
		Number	Persisted	Rate (%)	
1171	1.125	1	0	0.00	0.00
1172	1.128	1	0	0.00	0.00
1173	1.146	1	0	0.00	0.00
1174	1.153	1	0	0.00	0.00
1175	1.154	1	0	0.00	0.00
1176	1.164	1	0	0.00	0.00
1177	1.175	1	0	0.00	0.00
1178	1.177	1	0	0.00	0.00
1179	1.194	1	0	0.00	0.00
1180	1.205	1	0	0.00	0.00
1181	1.212	1	0	0.00	0.00
1182	1.238	1	0	0.00	0.00
1183	1.26	1	0	0.00	0.00
1184	1.28	1	0	0.00	0.00
1185	1.282	1	0	0.00	0.00
1186	1.286	1	0	0.00	0.00
1187	1.294	1	0	0.00	0.00
1188	1.305	1	0	0.00	0.00
1189	1.308	1	0	0.00	0.00
1190	1.32	1	0	0.00	0.00
1191	1.326	1	0	0.00	0.00
1192	1.328	1	0	0.00	0.00
1193	1.35	1	0	0.00	0.00
1194	1.364	1	0	0.00	0.00
1195	1.37	1	0	0.00	0.00
1196	1.374	1	0	0.00	0.00
1197	1.378	1	0	0.00	0.00
1198	1.386	1	0	0.00	0.00
1199	1.41	1	0	0.00	0.00
1200	1.433	1	0	0.00	0.00
1201	1.437	1	0	0.00	0.00
1202	1.442	1	0	0.00	0.00
1203	1.443	1	0	0.00	0.00
1204	1.448	1	0	0.00	0.00
1205	1.46	1	0	0.00	0.00
1206	1.467	1	0	0.00	0.00
1207	1.484	1	0	0.00	0.00
1208	1.49	1	0	0.00	0.00
1209	1.509	1	0	0.00	0.00

California State University, Stanislaus
Fall-to-spring GPA - 2nd term

Rank	Value	Total	Number	Persistence	Lift
		Number	Persisted	Rate (%)	
1210	1.529	1	0	0.00	0.00
1211	1.532	1	0	0.00	0.00
1212	1.533	1	0	0.00	0.00
1213	1.535	1	0	0.00	0.00
1214	1.538	1	0	0.00	0.00
1215	1.54	1	0	0.00	0.00
1216	1.547	1	0	0.00	0.00
1217	1.55	1	0	0.00	0.00
1218	1.555	1	0	0.00	0.00
1219	1.576	1	0	0.00	0.00
1220	1.579	1	0	0.00	0.00
1221	1.59	1	0	0.00	0.00
1222	1.617	1	0	0.00	0.00
1223	1.632	1	0	0.00	0.00
1224	1.636	1	0	0.00	0.00
1225	1.641	1	0	0.00	0.00
1226	1.652	1	0	0.00	0.00
1227	1.655	1	0	0.00	0.00
1228	1.657	1	0	0.00	0.00
1229	1.68	1	0	0.00	0.00
1230	1.683	1	0	0.00	0.00
1231	1.712	1	0	0.00	0.00
1232	1.723	1	0	0.00	0.00
1233	1.732	1	0	0.00	0.00
1234	1.733	1	0	0.00	0.00
1235	1.757	1	0	0.00	0.00
1236	1.763	1	0	0.00	0.00
1237	1.79	1	0	0.00	0.00
1238	1.814	1	0	0.00	0.00
1239	1.876	1	0	0.00	0.00
1240	1.895	1	0	0.00	0.00
1241	1.933	1	0	0.00	0.00
1242	1.938	1	0	0.00	0.00
1243	1.94	1	0	0.00	0.00
1244	1.955	1	0	0.00	0.00
1245	1.964	1	0	0.00	0.00
1246	1.975	1	0	0.00	0.00
1247	1.98	1	0	0.00	0.00
1248	2.005	1	0	0.00	0.00

California State University, Stanislaus
Fall-to-spring GPA - 2nd term

Rank	Value	Total	Number	Persistence	Lift
		Number	Persisted	Rate (%)	
1249	2.031	1	0	0.00	0.00
1250	2.033	1	0	0.00	0.00
1251	2.037	1	0	0.00	0.00
1252	2.043	1	0	0.00	0.00
1253	2.053	1	0	0.00	0.00
1254	2.058	1	0	0.00	0.00
1255	2.063	1	0	0.00	0.00
1256	2.092	1	0	0.00	0.00
1257	2.103	1	0	0.00	0.00
1258	2.129	1	0	0.00	0.00
1259	2.142	1	0	0.00	0.00
1260	2.148	1	0	0.00	0.00
1261	2.172	1	0	0.00	0.00
1262	2.174	1	0	0.00	0.00
1263	2.212	1	0	0.00	0.00
1264	2.222	1	0	0.00	0.00
1265	2.272	1	0	0.00	0.00
1266	2.275	1	0	0.00	0.00
1267	2.289	1	0	0.00	0.00
1268	2.331	1	0	0.00	0.00
1269	2.368	1	0	0.00	0.00
1270	2.375	1	0	0.00	0.00
1271	2.378	1	0	0.00	0.00
1272	2.379	1	0	0.00	0.00
1273	2.395	1	0	0.00	0.00
1274	2.494	1	0	0.00	0.00
1275	2.513	1	0	0.00	0.00
1276	2.562	1	0	0.00	0.00
1277	2.577	1	0	0.00	0.00
1278	2.619	1	0	0.00	0.00
1279	2.663	1	0	0.00	0.00
1280	2.669	1	0	0.00	0.00
1281	2.671	1	0	0.00	0.00
1282	2.706	1	0	0.00	0.00
1283	2.738	1	0	0.00	0.00
1284	2.746	1	0	0.00	0.00
1285	2.777	1	0	0.00	0.00
1286	2.789	1	0	0.00	0.00
1287	2.812	1	0	0.00	0.00

California State University, Stanislaus
Fall-to-spring GPA - 2nd term

Rank	Value	Total	Number	Persistence	Lift
		Number	Persisted	Rate (%)	
1288	2.831	1	0	0.00	0.00
1289	2.839	1	0	0.00	0.00
1290	2.871	1	0	0.00	0.00
1291	2.906	1	0	0.00	0.00
1292	2.982	1	0	0.00	0.00
1293	3.004	1	0	0.00	0.00
1294	3.08	1	0	0.00	0.00
1295	3.091	1	0	0.00	0.00
1296	3.097	1	0	0.00	0.00
1297	3.145	1	0	0.00	0.00
1298	3.153	1	0	0.00	0.00
1299	3.218	1	0	0.00	0.00
1300	3.245	1	0	0.00	0.00
1301	3.293	1	0	0.00	0.00
1302	3.417	1	0	0.00	0.00
1303	3.452	1	0	0.00	0.00
1304	3.47	1	0	0.00	0.00
1305	3.473	1	0	0.00	0.00
1306	3.475	1	0	0.00	0.00
1307	3.577	1	0	0.00	0.00
1308	3.697	1	0	0.00	0.00
1309	3.726	1	0	0.00	0.00
1310	3.745	1	0	0.00	0.00
1311	3.777	1	0	0.00	0.00
1312	3.791	1	0	0.00	0.00
1313	3.827	1	0	0.00	0.00
1314	3.871	1	0	0.00	0.00
Total		3423	2588	75.61	1.00

California State University, Stanislaus Distance from Campus (Optimal Binning)					
Rank	Value	Total Number	Number Persisted	Persistence Rate (%)	Lift
1	58.15 miles and below	2953	2293	77.65	1.03
2	Higher than 58.15 miles	470	295	62.77	0.83
Total		3423	2588	75.61	1.00

**California State University, Stanislaus
Sectional Center Facility Code**

Rank	SCF Code	City	State	Total Number	Number Persisted	Persistence Rate (%)	Lift
1	903	Inglewood	CA	4	4	100.00	1.32
2	919	San Diego	CA	3	3	100.00	1.32
3	924	San Bernadino	CA	3	3	100.00	1.32
4	954	North Bay	CA	3	3	100.00	1.32
5	905	Inglewood	CA	2	2	100.00	1.32
6	907	Long Beach	CA	2	2	100.00	1.32
7	914	Van Nuys	CA	2	2	100.00	1.32
8	961	Olympic Valley	CA	2	2	100.00	1.32
9	582	Grand Forks	ND	1	1	100.00	1.32
10	894	Reno	NV	1	1	100.00	1.32
11	897	Reno	NV	1	1	100.00	1.32
12	911	Pasadena	CA	1	1	100.00	1.32
13	931	Santa Barbara	CA	1	1	100.00	1.32
14	944	San Francisco	CA	1	1	100.00	1.32
15	948	Oakland	CA	1	1	100.00	1.32
16	960	Redding	CA	1	1	100.00	1.32
17	973	Salem	OR	1	1	100.00	1.32
18	974	Eugene	OR	1	1	100.00	1.32
19	982	Everett	WA	1	1	100.00	1.32
20	985	Olympia	WA	1	1	100.00	1.32
21	957	Sacramento	CA	6	5	83.33	1.10
22	935	Mojave	CA	5	4	80.00	1.06
23	900	Los Angeles	CA	24	19	79.17	1.05
24	953	Stockton	CA	2628	2055	78.20	1.03
25	951	San Jose	CA	32	24	75.00	0.99
26	928	Santa Ana	CA	8	6	75.00	0.99
27	934	Santa Barbara	CA	4	3	75.00	0.99
28	913	Van Nuys	CA	15	11	73.33	0.97
29	932	Bakersfield	CA	51	37	72.55	0.96
30	921	San Diego	CA	7	5	71.43	0.94
31	936	Fresno	CA	101	72	71.29	0.94
32	945	Oakland	CA	54	38	70.37	0.93
33	939	Salinas	CA	20	14	70.00	0.93
34	950	San Jose	CA	29	20	68.97	0.91
35	952	Stockton	CA	190	131	68.95	0.91
36	925	San Bernadino	CA	22	15	68.18	0.90
37	902	Inglewood	CA	6	4	66.67	0.88
38	906	Long Beach	CA	3	2	66.67	0.88
39	910	Pasadena	CA	3	2	66.67	0.88

**California State University, Stanislaus
Sectional Center Facility Code**

Rank	SCF Code	City	State	Total Number	Number Persisted	Persistence Rate (%)	Lift
40	933	Bakersfield	CA	3	2	66.67	0.88
41	949	North Bay	CA	3	2	66.67	0.88
42	959	Marysville	CA	8	5	62.50	0.83
43	923	San Bernadino	CA	34	19	55.88	0.74
44	917	Alhambra	CA	18	10	55.56	0.73
45	937	Fresno	CA	11	6	54.55	0.72
46	956	Sacramento	CA	32	17	53.13	0.70
47	958	Sacramento	CA	10	5	50.00	0.66
48	940	San Francisco	CA	8	4	50.00	0.66
49	946	Oakland	CA	6	3	50.00	0.66
50	130	Syracuse	NY	2	1	50.00	0.66
51	915	Van Nuys	CA	2	1	50.00	0.66
52	930	Oxnard	CA	2	1	50.00	0.66
53	941	San Francisco	CA	2	1	50.00	0.66
54	922	Palm Springs	CA	15	7	46.67	0.62
55	920	San Diego	CA	9	4	44.44	0.59
56	926	Santa Ana	CA	6	0	0.00	0.00
57	927	Santa Ana	CA	2	0	0.00	0.00
58	750	North Texas	TX	1	0	0.00	0.00
59	830	Rock Springs	WY	1	0	0.00	0.00
60	843	Salt Lake City	UT	1	0	0.00	0.00
61	857	Tucson	AZ	1	0	0.00	0.00
62	875	Albuquerque	NM	1	0	0.00	0.00
63	908	Long Beach	CA	1	0	0.00	0.00
64	955	Eureka	CA	1	0	0.00	0.00
65	975	Medford	OR	1	0	0.00	0.00
66	986	Vancouver	WA	1	0	0.00	0.00
Total				3423	2588	75.61	1.00

**California State University, Stanislaus
Market Segment**

Rank	Value	Description	Total Number	Number Persisted	Persistence Rate (%)	Lift
1	0051	Sutter	4	4	100.00	1.32
2	0009	El Dorado	2	2	100.00	1.32
3	6027	Nevada	2	2	100.00	1.32
4	6036	Oregon	2	2	100.00	1.32
5	6046	Washington	2	2	100.00	1.32
6	0017	Lake	1	1	100.00	1.32
7	0021	Marin	1	1	100.00	1.32
8	0025	Code Not Provided	1	1	100.00	1.32
9	0026	Mono	1	1	100.00	1.32
10	0032	Plumas	1	1	100.00	1.32
11	0047	Siskiyou	1	1	100.00	1.32
12	0058	Yuba	1	1	100.00	1.32
13	6031	New York	1	1	100.00	1.32
14	6033	Code Not Provided	1	1	100.00	1.32
15	0005	Calaveras	13	12	92.31	1.22
16	0035	San Benito	14	12	85.71	1.13
17	0024	Merced	588	467	79.42	1.05
18	0050	Stanislaus	1724	1347	78.13	1.03
19	0048	Solano	13	10	76.92	1.02
20	0007	Contra Costa	21	16	76.19	1.01
21	0042	Santa Barbara	8	6	75.00	0.99
22	0049	Sonoma	4	3	75.00	0.99
23	0039	San Joaquin	436	323	74.08	0.98
24	0043	Santa Clara	52	38	73.08	0.97
25	0003	Amador	11	8	72.73	0.96
26	0054	Tulare	50	36	72.00	0.95
27	0020	Madera	28	20	71.43	0.94
28	0041	San Mateo	7	5	71.43	0.94
29	0033	Riverside	56	39	69.64	0.92
30	0037	San Diego	22	15	68.18	0.90
31	0019	Los Angeles	97	66	68.04	0.90
32	0027	Monterrey	27	18	66.67	0.88
33	0015	Kern	9	6	66.67	0.88
34	0004	Butte	3	2	66.67	0.88
35	0001	Alameda	33	21	63.64	0.84
36	0036	San Bernardino	52	32	61.54	0.81
37	0034	Sacramento	35	21	60.00	0.79
38	0056	Ventura	5	3	60.00	0.79
39	0010	Fresno	32	19	59.38	0.79

**California State University, Stanislaus
Market Segment**

Rank	Value	Description	Total Number	Number Persisted	Persistence Rate (%)	Lift
40	0016	Kings	7	4	57.14	0.76
41	0044	Santa Cruz	7	4	57.14	0.76
42	0031	Placer	8	4	50.00	0.66
43	0029	Nevada	2	1	50.00	0.66
44	0057	Yolo	2	1	50.00	0.66
45	0028	Napa	5	2	40.00	0.53
46	0055	Tuolumne	6	2	33.33	0.44
47	0022	Mariposa	3	1	33.33	0.44
48	0038	San Francisco	3	1	33.33	0.44
49	0030	Orange	10	2	20.00	0.26
50	0006	Code Not Provided	1	0	0.00	0.00
51	0012	Code Not Provided	1	0	0.00	0.00
52	0013	Imperial	1	0	0.00	0.00
53	0040	San Luis Obispo	1	0	0.00	0.00
54	6003	Arizona	1	0	0.00	0.00
55	6030	New Mexico	1	0	0.00	0.00
56	6032	North Carolina	1	0	0.00	0.00
57	6043	Utah	1	0	0.00	0.00
58	6049	Wyoming	1	0	0.00	0.00
Total			3423	2588	75.61	1.00

**California State University, Stanislaus
No. of Days as Admit (Optimal Binning)**

Rank	Value	Total Number	Number Persisted	Persistence Rate (%)	Lift
1	71.5 to 82.5 days	1146	930	81.15	1.07
2	Higher than 82.5 days	1105	823	74.48	0.99
3	47 to 71.5 days	1026	746	72.71	0.96
4	47 days and below	146	89	60.96	0.81
Total		3423	2588	75.61	1.00

**California State University, Stanislaus
PACE Flag**

Rank	Value	Total Number	Number Persisted	Persistence Rate (%)	Lift
1	1	378	333	88.10	1.17
2	0	3045	2255	74.06	0.98
Total		3423	2588	75.61	1.00

**California State University, Stanislaus
Distance from Campus Flag**

Rank	Value	Total Number	Number Persisted	Persistence Rate (%)	Lift
1	1	2894	2244	77.54	1.03
2	0	529	344	65.03	0.86
Total		3423	2588	75.61	1.00

**California State University, Stanislaus
Distance from Campus (Equal Bins)**

Rank	Value	Total Number	Number Persisted	Persistence Rate (%)	Lift
1	7.7 miles or Less	856	686	80.14	1.06
2	7.8 to 14.4 miles	857	674	78.65	1.04
3	14.5 to 31.6 miles	855	651	76.14	1.01
4	31.7 miles or Greater	855	577	67.49	0.89
Total		3423	2588	75.61	1.00

**California State University, Stanislaus
Financial Aid Gap (Optimal Binning)**

Rank	Value	Total Number	Number Persisted	Persistence Rate (%)	Lift
1	-\$1,583.00 to \$1,484.00	1067	855	80.13	1.06
2	-\$1,847.50 and below	175	139	79.43	1.05
3	ZZ	364	276	75.82	1.00
4	Higher than \$1,484.00	1672	1227	73.39	0.97
5	-\$1,847.50 to -\$1,583.00	145	91	62.76	0.83
Total		3423	2588	75.61	1.00

Notes:

1. Missing values are found in category "ZZ".

**California State University, Stanislaus
Primary County Code of Student**

Rank	County Code	County	State	Total Number	Number Persisted	Persistence Rate (%)	Lift
1	06009	Calaveras	CA	10	10	100.00	1.32
2	06101	Sutter	CA	4	4	100.00	1.32
3	06017	El Dorado	CA	2	2	100.00	1.32
4	06033	Lake	CA	1	1	100.00	1.32
5	06041	Marin	CA	1	1	100.00	1.32
6	06051	Mono	CA	1	1	100.00	1.32
7	06093	Siskiyou	CA	1	1	100.00	1.32
8	06115	Yuba	CA	1	1	100.00	1.32
9	32031	Washoe	NV	1	1	100.00	1.32
10	32510	Carson City	NV	1	1	100.00	1.32
11	38035	Grand Forks	ND	1	1	100.00	1.32
12	41039	Lane	OR	1	1	100.00	1.32
13	41047	Marion	OR	1	1	100.00	1.32
14	53061	Snohomish	WA	1	1	100.00	1.32
15	53067	Thurston	WA	1	1	100.00	1.32
16	06083	Santa Barbara	CA	5	4	80.00	1.06
17	06047	Merced	CA	573	452	78.88	1.04
18	06099	Stanislaus	CA	1884	1468	77.92	1.03
19	06013	Contra Costa	CA	18	14	77.78	1.03
20	06097	Sonoma	CA	4	3	75.00	0.99
21	06077	San Joaquin	CA	400	297	74.25	0.98
22	06107	Tulare	CA	45	33	73.33	0.97
23	06005	Amador	CA	11	8	72.73	0.96
24	06069	San Benito	CA	11	8	72.73	0.96
25	06085	Santa Clara	CA	46	33	71.74	0.95
26	06081	San Mateo	CA	7	5	71.43	0.94
27	06037	Los Angeles	CA	76	54	71.05	0.94
28	06053	Monterey	CA	20	14	70.00	0.93
29	06029	Kern	CA	10	7	70.00	0.93
30	06039	Madera	CA	23	16	69.57	0.92
31	06095	Solano	CA	12	8	66.67	0.88
32	06111	Ventura	CA	3	2	66.67	0.88
33	06001	Alameda	CA	31	20	64.52	0.85
34	06065	Riverside	CA	45	29	64.44	0.85
35	06073	San Diego	CA	19	12	63.16	0.84
36	06019	Fresno	CA	28	17	60.71	0.80
37	06071	San Bernardino	CA	43	26	60.47	0.80
38	06031	Kings	CA	5	3	60.00	0.79
39	06067	Sacramento	CA	24	12	50.00	0.66

**California State University, Stanislaus
Primary County Code of Student**

Rank	County Code	County	State	Total Number	Number Persisted	Persistence Rate (%)	Lift
40	06087	Santa Cruz	CA	6	3	50.00	0.66
41	06043	Mariposa	CA	2	1	50.00	0.66
42	06055	Napa	CA	2	1	50.00	0.66
43	06057	Nevada	CA	2	1	50.00	0.66
44	06075	San Francisco	CA	2	1	50.00	0.66
45	06113	Yolo	CA	2	1	50.00	0.66
46	36067	Onondaga	NY	2	1	50.00	0.66
47	06061	Placer	CA	7	3	42.86	0.57
48	06109	Tuolumne	CA	7	2	28.57	0.38
49	06059	Orange	CA	10	1	10.00	0.13
50	04019	Pima	AZ	1	0	0.00	0.00
51	06007	Butte	CA	1	0	0.00	0.00
52	06011	Colusa	CA	1	0	0.00	0.00
53	06023	Humboldt	CA	1	0	0.00	0.00
54	35028	Los Alamos	NM	1	0	0.00	0.00
55	41033	Josephine	OR	1	0	0.00	0.00
56	48085	Collin	TX	1	0	0.00	0.00
57	49005	Cache	UT	1	0	0.00	0.00
58	53011	Clark	WA	1	0	0.00	0.00
59	56039	Teton	WY	1	0	0.00	0.00
Total				3423	2588	75.61	1.00

**California State University, Stanislaus
Academic Major**

Rank	Value	Description	Total Number	Number Persisted	Persistence Rate (%)	Lift
1	49016	Cognitive Studies	5	5	100.00	1.32
2	15091	Philosophy	2	2	100.00	1.32
3	19141	Geology	2	2	100.00	1.32
4	10022	Art (BFA)	1	1	100.00	1.32
5	22991	Ethnic Studies	1	1	100.00	1.32
6	22021	Anthropology	19	17	89.47	1.18
7	19051	Chemistry	64	55	85.94	1.14
8	22041	Economics	7	6	85.71	1.13
9	22081	Sociology	49	41	83.67	1.11
10	11051	Spanish	12	10	83.33	1.10
11	07021	Computer Information Systems	6	5	83.33	1.10
12	22051	History	35	29	82.86	1.10
13	49012	Liberal Studies	151	123	81.46	1.08
14	17011	Mathematics	48	39	81.25	1.07
15	15011	English	53	43	81.13	1.07
16	20011	Psychology	238	186	78.15	1.03
17	04011	Biological Sciences	338	264	78.11	1.03
18	07011	Computer Science	92	70	76.09	1.01
19	00121	Pre-Nursing	652	496	76.07	1.01
20	06011	Communication Studies	50	38	76.00	1.01
21	05011	Business Administration	356	263	73.88	0.98
22	00000	Undeclared/Undecided	577	425	73.66	0.97
23	08351	Kinesiology	115	84	73.04	0.97
24	08231	Child Development	44	32	72.73	0.96
25	10021	Art (BA)	50	36	72.00	0.95
26	01014	Agricultural Studies	25	18	72.00	0.95
27	19011	Physical Sciences	7	5	71.43	0.94
28	21051	Criminal Justice	304	214	70.39	0.93
29	10071	Theatre Arts	20	14	70.00	0.93
30	22071	Political Science	34	23	67.65	0.89
31	10041	Music	18	12	66.67	0.88
32	19021	Physics	17	11	64.71	0.86
33	10051	Music	21	13	61.90	0.82
34	22011	Social Sciences	9	5	55.56	0.73
35	22061	Geography	1	0	0.00	0.00
Total			3423	2588	75.61	1.00

California State University, Stanislaus
No. of Days as Admit

Rank	Value	Total Number	Number Persisted	Persistence Rate (%)	Lift
1	03:78-83 days	800	646	80.75	1.07
2	02:61-78 days	673	521	77.41	1.02
3	04:83 days-high	1105	823	74.48	0.99
4	01:low-61 days	845	598	70.77	0.94
Total		3423	2588	75.61	1.00

**California State University, Stanislaus
Major at Admit Stage**

Rank	Value	Description	Total Number	Number Persisted	Persistence Rate (%)	Lift
1	49016	Cognitive Studies	3	3	100.00	1.32
2	15091	Philosophy	2	2	100.00	1.32
3	19141	Geology	1	1	100.00	1.32
4	22990	Code Not Provided	1	1	100.00	1.32
5	22991	Code Not Provided	1	1	100.00	1.32
6	22041	Economics	8	7	87.50	1.16
7	19051	Chemistry	69	59	85.51	1.13
8	11051	Spanish	13	11	84.62	1.12
9	22021	Anthropology	19	16	84.21	1.11
10	07021	Computer Information Systems	12	10	83.33	1.10
11	22081	Sociology	45	37	82.22	1.09
12	15011	English	56	46	82.14	1.09
13	22051	History	38	31	81.58	1.08
14	49012	Liberal Studies	153	124	81.05	1.07
15	17011	Mathematics	46	37	80.43	1.06
16	06011	Communication Studies	47	37	78.72	1.04
17	20011	Psychology	236	184	77.97	1.03
18	04011	Biological Sciences	339	264	77.88	1.03
19	08231	Child Development	44	34	77.27	1.02
20	07011	Computer Science	88	67	76.14	1.01
21	00121	Pre-Nursing	646	490	75.85	1.00
22	10021	Art (BA)	52	39	75.00	0.99
23	00000	Undeclared/Undecided	600	444	74.00	0.98
24	05011	Business Administration	336	247	73.51	0.97
25	10041	Music	18	13	72.22	0.96
26	08351	Kinesiology	104	75	72.12	0.95
27	19011	Physical Sciences	7	5	71.43	0.94
28	01014	Agricultural Studies	24	17	70.83	0.94
29	21051	Criminal Justice	306	216	70.59	0.93
30	19021	Physics	17	12	70.59	0.93
31	22071	Political Science	34	23	67.65	0.89
32	10071	Theatre Arts	21	14	66.67	0.88
33	22011	Social Sciences	11	7	63.64	0.84
34	10051	Music	25	14	56.00	0.74
35	22061	Geography	1	0	0.00	0.00
Total			3423	2588	75.61	1.00

**California State University, Stanislaus
Non-Resident Flag**

Rank	Value	Total Number	Number Persisted	Persistence Rate (%)	Lift
1	1	2622	2036	77.65	1.03
2	0	801	552	68.91	0.91
Total		3423	2588	75.61	1.00

**California State University, Stanislaus
Residency Status**

Rank	Value	Description	Total Number	Number Persisted	Persistence Rate (%)	Lift
1	C	Off-Campus/Commuter	2622	2036	77.65	1.03
2	R	On-Campus Resident	801	552	68.91	0.91
Total			3423	2588	75.61	1.00

**California State University, Stanislaus
Financial Need (Optimal Binning)**

Rank	Value	Total Number	Number Persisted	Persistence Rate (%)	Lift
1	\$10,020.50 and below	2243	1740	77.57	1.03
2	Higher than \$11,199.50	328	254	77.44	1.02
3	ZZ	364	276	75.82	1.00
4	\$10,020.50 to \$11,199.50	488	318	65.16	0.86
Total		3423	2588	75.61	1.00

Notes:

1. Missing values are found in category "ZZ".

**California State University, Stanislaus
Personix Life Stage Group**

Rank	Value	Description	Total Number	Number Persisted	Persistence Rate (%)	Lift
1	3	Transition Time	26	23	88.46	1.17
2	6	Mixed Singles	32	27	84.38	1.12
3	1	Beginnings	208	169	81.25	1.07
4	8	Jumbo Families	211	170	80.57	1.07
5	18	Mature Rustics	29	23	79.31	1.05
6	7	Cash & Careers	210	166	79.05	1.05
7	2	Taking Hold	157	123	78.34	1.04
8	11	Fortunes & Families	397	307	77.33	1.02
9	4	Flying Solo	104	79	75.96	1.00
10	16	Aging Upscale	120	91	75.83	1.00
11	17	Modest Means	103	78	75.73	1.00
12	20	Active Elders	106	80	75.47	1.00
13	10	Mixed Middlers	150	113	75.33	1.00
14	12	Flush Families	557	414	74.33	0.98
15	21	Leisure Buffs	69	51	73.91	0.98
16	9	Middling Singles	23	17	73.91	0.98
17	5	Family Focused	95	70	73.68	0.97
18	19	Golden Years	281	206	73.31	0.97
19	14	Our Turn	108	78	72.22	0.96
20	ZZ	Missing Values	127	90	70.87	0.94
21	15	Mature Wealth	157	108	68.79	0.91
22	13	True Blues	153	105	68.63	0.91
Total			3423	2588	75.61	1.00

Notes:

1. Missing values are found in category "ZZ".

**California State University, Stanislaus
Financial Need**

Rank	Value	Total Number	Number Persisted	Persistence Rate (%)	Lift
1	02:\$2,993.00-\$7,787.00	651	519	79.72	1.05
2	03:\$7,787.00-\$10,030.00	830	637	76.75	1.02
3	01:low-\$2,993.00	764	585	76.57	1.01
4	ZZ	364	276	75.82	1.00
5	04:\$10,030.00-high	814	571	70.15	0.93
Total		3423	2588	75.61	1.00

Notes:

1. Missing values are found in category "ZZ".

**California State University, Stanislaus
Total Financial Aid Package (Optimal Binning)**

Rank	Value	Total Number	Number Persisted	Persistence Rate (%)	Lift
1	\$7,122.00 and below	2639	2037	77.19	1.02
2	ZZ	310	234	75.48	1.00
3	Higher than \$7,122.00	474	317	66.88	0.88
Total		3423	2588	75.61	1.00

Notes:

1. Missing values are found in category "ZZ".

**California State University, Stanislaus
Student Age (Equal Bins)**

Rank	Value	Total Number	Number Persisted	Persistence Rate (%)	Lift
1	18.0 or Less	3213	2453	76.35	1.01
2	18.1 or Greater	210	135	64.29	0.85
Total		3423	2588	75.61	1.00

California State University, Stanislaus No. of Days as Applicant (Optimal Binning)					
Rank	Value	Total Number	Number Persisted	Persistence Rate (%)	Lift
1	265.5 to 325.5 days	3146	2411	76.64	1.01
2	265.5 days and below	255	167	65.49	0.87
3	Higher than 325.5 days	22	10	45.45	0.60
Total		3423	2588	75.61	1.00

**California State University, Stanislaus
Average Income**

Rank	Value	Description	Total Number	Number Persisted	Persistence Rate (%)	Lift
1	Q	\$175,000 to \$199,999	33	30	90.91	1.20
2	F	\$30,000 to \$34,999	82	68	82.93	1.10
3	D	\$20,000 to \$24,999	46	36	78.26	1.04
4	K	\$55,000 to \$59,999	213	166	77.93	1.03
5	M	\$65,000 to \$74,999	414	320	77.29	1.02
6	L	\$60,000 to \$64,999	205	157	76.59	1.01
7	N	\$75,000 to \$99,999	655	501	76.49	1.01
8	H	\$40,000 to \$44,999	161	123	76.40	1.01
9	G	\$35,000 to \$39,999	138	105	76.09	1.01
10	O	\$100,000 to \$149,999	413	313	75.79	1.00
11	I	\$45,000 to \$49,999	208	156	75.00	0.99
12	C	\$15,000 to \$19,999	114	85	74.56	0.99
13	B	\$10,000 to \$14,999	78	58	74.36	0.98
14	R	\$200,000 to \$249,999	31	23	74.19	0.98
15	S	\$250,000 and Above	41	30	73.17	0.97
16	ZZ	Missing Values	168	121	72.02	0.95
17	J	\$50,000 to \$54,999	203	145	71.43	0.94
18	A	Less than \$10,000	101	72	71.29	0.94
19	E	\$25,000 to \$29,999	83	56	67.47	0.89
20	P	\$150,000 to \$174,999	36	23	63.89	0.84
Total			3423	2588	75.61	1.00

Notes:

1. Missing values are found in category "ZZ".

**California State University, Stanislaus
Ethnicity**

Rank	Value	Description	Total Number	Number Persisted	Persistence Rate (%)	Lift
1	4	Asian - Non-Hispanic	381	303	79.53	1.05
2	8	Unknown	127	100	78.74	1.04
3	7	Hispanic/Latino	1837	1404	76.43	1.01
4	5	Native Hawaiian or Other Pacific Islander-NonHis	25	19	76.00	1.01
5	1	White - Non-Hispanic	824	605	73.42	0.97
6	3	American Indian or Alaska Native - Non-Hispanic	7	5	71.43	0.94
7	2	Black or African American - Non-Hispanic	93	64	68.82	0.91
8	6	Two or More Races - Non-Hispanic	129	88	68.22	0.90
Total			3423	2588	75.61	1.00

**California State University, Stanislaus
Total Income (Optimal Binning)**

Rank	Value	Total Number	Number Persisted	Persistence Rate (%)	Lift
1	Higher than \$21,709.50	2350	1812	77.11	1.02
2	ZZ	225	171	76.00	1.01
3	\$21,709.50 and below	848	605	71.34	0.94
Total		3423	2588	75.61	1.00

Notes:

1. Missing values are found in category "ZZ".

**California State University, Stanislaus
Student Total Income > 0 Flag**

Rank	Value	Total Number	Number Persisted	Persistence Rate (%)	Lift
1	0	2027	1568	77.36	1.02
2	ZZ	365	276	75.62	1.00
3	1	1031	744	72.16	0.95
Total		3423	2588	75.61	1.00

Notes:

1. Missing values are found in category "ZZ".

**California State University, Stanislaus
Financial Aid Gap**

Rank	Value	Total Number	Number Persisted	Persistence Rate (%)	Lift
1	02:\$0.00-\$1,580.00	845	669	79.17	1.05
2	01:low-\$0.00	684	520	76.02	1.01
3	ZZ	364	276	75.82	1.00
4	04:\$3,261.00-high	781	575	73.62	0.97
5	03:\$1,580.00-\$3,261.00	749	548	73.16	0.97
Total		3423	2588	75.61	1.00

Notes:

1. Missing values are found in category "ZZ".

**California State University, Stanislaus
Placement Math (Equal Bins)**

Rank	Value	Total Number	Number Persisted	Persistence Rate (%)	Lift
1	ZZ	1052	842	80.04	1.06
2	40.1 to 50.0	639	488	76.37	1.01
3	50.1 or Greater	542	412	76.01	1.01
4	34.0 or Less	723	518	71.65	0.95
5	34.1 to 40.0	467	328	70.24	0.93
Total		3423	2588	75.61	1.00

Notes:

1. Missing values are found in category "ZZ".

**California State University, Stanislaus
No. of Days as Admit (Equal Bins)**

Rank	Value	Total Number	Number Persisted	Persistence Rate (%)	Lift
1	61.1 to 78.0 days	1304	1029	78.91	1.04
2	83.1 days or Greater	28	22	78.57	1.04
3	78.1 to 83.0 days	1233	929	75.34	1.00
4	61.0 days or Less	858	608	70.86	0.94
Total		3423	2588	75.61	1.00

**California State University, Stanislaus
SAT Combined Score**

Rank	Value	Total Number	Number Persisted	Persistence Rate (%)	Lift
1	04:1020-high	767	611	79.66	1.05
2	02:820-910	703	536	76.24	1.01
3	03:910-1020	746	557	74.66	0.99
4	01:low-820	666	488	73.27	0.97
5	ZZ	541	396	73.20	0.97
Total		3423	2588	75.61	1.00

Notes:

1. Missing values are found in category "ZZ".

**California State University, Stanislaus
SAT Combined Score (Optimal Binning)**

Rank	Value	Total Number	Number Persisted	Persistence Rate (%)	Lift
1	Higher than 995	880	704	80.00	1.06
2	995 and below	2002	1488	74.33	0.98
3	ZZ	541	396	73.20	0.97
Total		3423	2588	75.61	1.00

Notes:

1. Missing values are found in category "ZZ".

California State University, Stanislaus
No. of Days as Applicant

Rank	Value	Total Number	Number Persisted	Persistence Rate (%)	Lift
1	03:285-305 days	868	675	77.76	1.03
2	02:269-285 days	867	663	76.47	1.01
3	04:305 days-high	859	654	76.14	1.01
4	01:low-269 days	829	596	71.89	0.95
Total		3423	2588	75.61	1.00

**California State University, Stanislaus
Financial Need (Equal Bins)**

Rank	Value	Total Number	Number Persisted	Persistence Rate (%)	Lift
1	\$2,993.01 to \$7,787.00	899	710	78.98	1.04
2	\$2,993.00 or Less	765	585	76.47	1.01
3	ZZ	364	276	75.82	1.00
4	\$7,787.01 to \$10,030.00	752	552	73.40	0.97
5	\$10,030.01 or Greater	643	465	72.32	0.96
Total		3423	2588	75.61	1.00

Notes:

1. Missing values are found in category "ZZ".

**California State University, Stanislaus
Total Income (Equal Bins)**

Rank	Value	Total Number	Number Persisted	Persistence Rate (%)	Lift
1	\$74,612.00 or Greater	799	616	77.10	1.02
2	\$42,708.00 to \$74,611.00	800	613	76.63	1.01
3	\$20,687.00 to \$42,707.00	799	611	76.47	1.01
4	ZZ	226	171	75.66	1.00
5	\$20,686.00 or Less	799	577	72.22	0.96
Total		3423	2588	75.61	1.00

Notes:

1. Missing values are found in category "ZZ".

**California State University, Stanislaus
Entry Term**

Rank	Value	Description	Total Number	Number Persisted	Persistence Rate (%)	Lift
1	F2012	Fall 2012	1070	831	77.66	1.03
2	F2013	Fall 2013	1178	896	76.06	1.01
3	F2011	Fall 2011	1175	861	73.28	0.97
Total			3423	2588	75.61	1.00

**California State University, Stanislaus
No. of Days as Applicant (Equal Bins)**

Rank	Value	Total Number	Number Persisted	Persistence Rate (%)	Lift
1	286 to 305 days	876	689	78.65	1.04
2	270 to 285 days	785	597	76.05	1.01
3	306 days or Greater	822	622	75.67	1.00
4	269 days or Less	940	680	72.34	0.96
Total		3423	2588	75.61	1.00

**California State University, Stanislaus
SAT Writing Score (Equal Bins)**

Rank	Value	Total Number	Number Persisted	Persistence Rate (%)	Lift
1	511 or Greater	506	402	79.45	1.05
2	451 to 510	677	536	79.17	1.05
3	411 to 450	521	393	75.43	1.00
4	410 or Less	684	503	73.54	0.97
5	ZZ	1035	754	72.85	0.96
Total		3423	2588	75.61	1.00

Notes:

1. Missing values are found in category "ZZ".

**California State University, Stanislaus
Total Financial Aid Package**

Rank	Value	Total Number	Number Persisted	Persistence Rate (%)	Lift
1	03:\$5,476.00-\$6,412.00	776	604	77.84	1.03
2	01:low-\$2,736.00	761	582	76.48	1.01
3	02:\$2,736.00-\$5,476.00	795	606	76.23	1.01
4	ZZ	310	234	75.48	1.00
5	04:\$6,412.00-high	781	562	71.96	0.95
Total		3423	2588	75.61	1.00

Notes:

1. Missing values are found in category "ZZ".

**California State University, Stanislaus
TRIO flag (SSS)**

Rank	Value	Description	Total Number	Number Persisted	Persistence Rate (%)	Lift
1	Y	TRIO flag (SSS)	73	66	90.41	1.20
2	N	Not TRIO	3350	2522	75.28	1.00
Total			3423	2588	75.61	1.00

**California State University, Stanislaus
SAT Math Score (Equal Bins)**

Rank	Value	Total Number	Number Persisted	Persistence Rate (%)	Lift
1	521 or Greater	684	536	78.36	1.04
2	461 to 520	727	560	77.03	1.02
3	411 to 460	701	535	76.32	1.01
4	ZZ	541	396	73.20	0.97
5	410 or Less	770	561	72.86	0.96
Total		3423	2588	75.61	1.00

Notes:

1. Missing values are found in category "ZZ".

California State University, Stanislaus SAT Combined Score (Equal Bins)					
Rank	Value	Total Number	Number Persisted	Persistence Rate (%)	Lift
1	1021 or Greater	715	576	80.56	1.07
2	821 to 910	723	561	77.59	1.03
3	ZZ	541	396	73.20	0.97
4	911 to 1020	707	517	73.13	0.97
5	820 or Less	737	538	73.00	0.97
Total		3423	2588	75.61	1.00

Notes:

1. Missing values are found in category "ZZ".

**California State University, Stanislaus
Primary State of Student**

Rank	Value	State	Total Number	Number Persisted	Persistence Rate (%)	Lift
1	NV	Nevada	2	2	100.00	1.32
2	ND	North Dakota	1	1	100.00	1.32
3	CA	California	3407	2580	75.73	1.00
4	OR	Oregon	3	2	66.67	0.88
5	WA	Washington	3	2	66.67	0.88
6	NY	New York	2	1	50.00	0.66
7	AZ	Arizona	1	0	0.00	0.00
8	NM	New Mexico	1	0	0.00	0.00
9	TX	Texas	1	0	0.00	0.00
10	UT	Utah	1	0	0.00	0.00
11	WY	Wyoming	1	0	0.00	0.00
Total			3423	2588	75.61	1.00

**California State University, Stanislaus
Total Income**

Rank	Value	Total Number	Number Persisted	Persistence Rate (%)	Lift
1	04:\$74,611.00-high	800	617	77.13	1.02
2	03:\$42,707.00-\$74,611.00	799	612	76.60	1.01
3	02:\$20,686.00-\$42,707.00	800	611	76.38	1.01
4	ZZ	225	171	76.00	1.01
5	01:low-\$20,686.00	799	577	72.22	0.96
Total		3423	2588	75.61	1.00

Notes:

1. Missing values are found in category "ZZ".

**California State University, Stanislaus
Financial Aid Gap (Equal Bins)**

Rank	Value	Total Number	Number Persisted	Persistence Rate (%)	Lift
1	\$0.01 to \$1,580.00	627	497	79.27	1.05
2	\$0.00 or Less	903	692	76.63	1.01
3	ZZ	364	276	75.82	1.00
4	\$3,261.01 or Greater	764	563	73.69	0.97
5	\$1,580.01 to \$3,261.00	765	560	73.20	0.97
Total		3423	2588	75.61	1.00

Notes:

1. Missing values are found in category "ZZ".

**California State University, Stanislaus
High School Graduation Year**

Rank	Value	Total Number	Number Persisted	Persistence Rate (%)	Lift
1	2008	3	3	100.00	1.32
2	2007	1	1	100.00	1.32
3	2012	1075	831	77.30	1.02
4	2013	1150	878	76.35	1.01
5	2011	1175	864	73.53	0.97
6	2010	14	9	64.29	0.85
7	2009	5	2	40.00	0.53
Total		3423	2588	75.61	1.00

**California State University, Stanislaus
Admit Type**

Rank	Value	Description	Total Number	Number Persisted	Persistence Rate (%)	Lift
1	C	Conditionally Admitted	11	10	90.91	1.20
2	A	Regularly Admitted	3124	2378	76.12	1.01
3	P	Provisionally Admitted	288	200	69.44	0.92
Total			3423	2588	75.61	1.00

**California State University, Stanislaus
Official ACT Scores Flag**

Rank	Value	Total Number	Number Persisted	Persistence Rate (%)	Lift
1	1	1153	897	77.80	1.03
2	0	2270	1691	74.49	0.99
Total		3423	2588	75.61	1.00

**California State University, Stanislaus
Service Learning 1st year**

Rank	Value	Description	Total Number	Number Persisted	Persistence Rate (%)	Lift
1	Y	Service Learning (1st year)	839	657	78.31	1.04
2	N	Not Service Learning	2584	1931	74.73	0.99
Total			3423	2588	75.61	1.00

**California State University, Stanislaus
Total Financial Aid Package (Equal Bins)**

Rank	Value	Total Number	Number Persisted	Persistence Rate (%)	Lift
1	\$5,476.01 to \$6,412.00	780	607	77.82	1.03
2	\$2,736.01 to \$5,476.00	722	551	76.32	1.01
3	\$2,736.00 or Less	835	637	76.29	1.01
4	ZZ	310	234	75.48	1.00
5	\$6,412.01 or Greater	776	559	72.04	0.95
Total		3423	2588	75.61	1.00

Notes:

1. Missing values are found in category "ZZ".

**California State University, Stanislaus
Placement Math (Optimal Binning)**

Rank	Value	Total Number	Number Persisted	Persistence Rate (%)	Lift
1	17 and below	21	17	80.95	1.07
2	ZZ	1052	842	80.04	1.06
3	Higher than 19	2331	1721	73.83	0.98
4	17 to 19	19	8	42.11	0.56
Total		3423	2588	75.61	1.00

Notes:

1. Missing values are found in category "ZZ".

**California State University, Stanislaus
Avg. Household Income**

Rank	Value	Total Number	Number Persisted	Persistence Rate (%)	Lift
1	02:\$36,678.00-\$74,655.00	659	518	78.60	1.04
2	04:\$129,813.00-high	891	681	76.43	1.01
3	03:\$74,655.00-\$129,813.00	949	709	74.71	0.99
4	01:low-\$36,678.00	797	590	74.03	0.98
5	ZZ	127	90	70.87	0.94
Total		3423	2588	75.61	1.00

Notes:

1. Missing values are found in category "ZZ".

**California State University, Stanislaus
SAT Critical Reading Score (Equal Bins)**

Rank	Value	Total Number	Number Persisted	Persistence Rate (%)	Lift
1	511 or Greater	660	530	80.30	1.06
2	401 to 450	676	517	76.48	1.01
3	400 or Less	811	604	74.48	0.99
4	451 to 510	735	541	73.61	0.97
5	ZZ	541	396	73.20	0.97
Total		3423	2588	75.61	1.00

Notes:

1. Missing values are found in category "ZZ".

**California State University, Stanislaus
Subdivision or College**

Rank	Value	Description	Total Number	Number Persisted	Persistence Rate (%)	Lift
1	COS	College of Science	1493	1153	77.23	1.02
2	COE	College of Education	263	203	77.19	1.02
3	CAHSS	College of the Arts Humanities & Social Sciences	723	536	74.14	0.98
4	CBA	College of Business Administration	354	262	74.01	0.98
5	UNDECL	Undeclared	590	434	73.56	0.97
Total			3423	2588	75.61	1.00

**California State University, Stanislaus
Placement Math**

Rank	Value	Total Number	Number Persisted	Persistence Rate (%)	Lift
1	ZZ	1052	842	80.04	1.06
2	04:50-high	687	520	75.69	1.00
3	03:40-50	655	492	75.11	0.99
4	02:34-40	451	329	72.95	0.96
5	01:low-34	578	405	70.07	0.93
Total		3423	2588	75.61	1.00

Notes:

1. Missing values are found in category "ZZ".

**California State University, Stanislaus
Independent Status Flag**

Rank	Value	Total Number	Number Persisted	Persistence Rate (%)	Lift
1	0	2953	2245	76.02	1.01
2	ZZ	374	284	75.94	1.00
3	1	96	59	61.46	0.81
Total		3423	2588	75.61	1.00

Notes:

1. Missing values are found in category "ZZ".

**California State University, Stanislaus
ACT Math Score (Equal Bins)**

Rank	Value	Total Number	Number Persisted	Persistence Rate (%)	Lift
1	23.1 or Greater	242	200	82.64	1.09
2	17.1 to 19.0	221	174	78.73	1.04
3	19.1 to 23.0	296	232	78.38	1.04
4	ZZ	2270	1691	74.49	0.99
5	17.0 or Less	394	291	73.86	0.98
Total		3423	2588	75.61	1.00

Notes:

1. Missing values are found in category "ZZ".

**California State University, Stanislaus
Placement English (Equal Bins)**

Rank	Value	Total Number	Number Persisted	Persistence Rate (%)	Lift
1	ZZ	1261	994	78.83	1.04
2	141 to 145	547	416	76.05	1.01
3	146 or Greater	512	377	73.63	0.97
4	135 or Less	584	428	73.29	0.97
5	136 to 140	519	373	71.87	0.95
Total		3423	2588	75.61	1.00

Notes:

1. Missing values are found in category "ZZ".

**California State University, Stanislaus
Expected Family Contribution > 0 Flag**

Rank	Value	Total Number	Number Persisted	Persistence Rate (%)	Lift
1	1	1752	1346	76.83	1.02
2	ZZ	364	276	75.82	1.00
3	0	1307	966	73.91	0.98
Total		3423	2588	75.61	1.00

Notes:

1. Missing values are found in category "ZZ".

**California State University, Stanislaus
Gender Flag**

Rank	Value	Total Number	Number Persisted	Persistence Rate (%)	Lift
1	0	2242	1716	76.54	1.01
2	1	1181	872	73.84	0.98
Total		3423	2588	75.61	1.00

**California State University, Stanislaus
FMP flag**

Rank	Value	Description	Total Number	Number Persisted	Persistence Rate (%)	Lift
1	N	Not FMP	3278	2488	75.90	1.00
2	Y	FMP flag	145	100	68.97	0.91
Total			3423	2588	75.61	1.00

**California State University, Stanislaus
Parent income**

Rank	Value	Total Number	Number Persisted	Persistence Rate (%)	Lift
1	02:\$23,106.00-\$42,954.00	705	544	77.16	1.02
2	04:\$72,427.00-high	706	543	76.91	1.02
3	03:\$42,954.00-\$72,427.00	705	542	76.88	1.02
4	01:low-\$23,106.00	705	525	74.47	0.98
5	ZZ	602	434	72.09	0.95
Total		3423	2588	75.61	1.00

Notes:

1. Missing values are found in category "ZZ".

**California State University, Stanislaus
EOP flags**

Rank	Value	Description	Total Number	Number Persisted	Persistence Rate (%)	Lift
1	N	Not EOP	3103	2358	75.99	1.01
2	Y	EOP flag	320	230	71.88	0.95
Total			3423	2588	75.61	1.00

**California State University, Stanislaus
ACT Composite Score**

Rank	Value	Total Number	Number Persisted	Persistence Rate (%)	Lift
1	04:22-high	299	242	80.94	1.07
2	01:low-16	196	154	78.57	1.04
3	02:16-19	340	261	76.76	1.02
4	03:19-22	318	240	75.47	1.00
5	ZZ	2270	1691	74.49	0.99
Total		3423	2588	75.61	1.00

Notes:

1. Missing values are found in category "ZZ".

**California State University, Stanislaus
Total Gift Funds**

Rank	Value	Total Number	Number Persisted	Persistence Rate (%)	Lift
1	03:\$4,686.00-\$6,287.00	677	522	77.10	1.02
2	02:\$1,750.00-\$4,686.00	777	597	76.83	1.02
3	ZZ	311	234	75.24	1.00
4	01:low-\$1,750.00	775	580	74.84	0.99
5	04:\$6,287.00-high	883	655	74.18	0.98
Total		3423	2588	75.61	1.00

Notes:

1. Missing values are found in category "ZZ".

**California State University, Stanislaus
Official SAT Scores Flag**

Rank	Value	Total Number	Number Persisted	Persistence Rate (%)	Lift
1	1	2882	2192	76.06	1.01
2	0	541	396	73.20	0.97
Total		3423	2588	75.61	1.00

**California State University, Stanislaus
Percent of Need Met (Equal Bins)**

Rank	Value	Total Number	Number Persisted	Persistence Rate (%)	Lift
1	80.1 to 100.0	1448	1110	76.66	1.01
2	ZZ	364	276	75.82	1.00
3	63.1 to 80.0	828	624	75.36	1.00
4	63.0 or Less	783	578	73.82	0.98
Total		3423	2588	75.61	1.00

Notes:

1. Missing values are found in category "ZZ".

**California State University
Race Flag**

Rank	Value	Total Number	Number Persisted	Persistence Rate (%)	Lift
1	1	1837	1404	76.43	1.01
2	0	1586	1184	74.65	0.99
Total		3423	2588	75.61	1.00

**California State University, Stanislaus
Percent of Need Met**

Rank	Value	Total Number	Number Persisted	Persistence Rate (%)	Lift
1	04:100-high	900	691	76.78	1.02
2	ZZ	364	276	75.82	1.00
3	02:63-80	750	568	75.73	1.00
4	03:80-100	674	510	75.67	1.00
5	01:low-63	735	543	73.88	0.98
Total		3423	2588	75.61	1.00

Notes:

1. Missing values are found in category "ZZ".

**California State University, Stanislaus
Flag Hispanic**

Rank	Value	Description	Total Number	Number Persisted	Persistence Rate (%)	Lift
1	Y	Hispanic ethnicity	1837	1404	76.43	1.01
2	N	Not Hispanic ethnicity	1586	1184	74.65	0.99
Total			3423	2588	75.61	1.00

**California State University, Stanislaus
ACT Composite Score (Equal Bins)**

Rank	Value	Total Number	Number Persisted	Persistence Rate (%)	Lift
1	22.1 or Greater	228	183	80.26	1.06
2	19.1 to 22.0	279	220	78.85	1.04
3	16.0 or Less	302	235	77.81	1.03
4	16.1 to 19.0	344	259	75.29	1.00
5	ZZ	2270	1691	74.49	0.99
Total		3423	2588	75.61	1.00

Notes:

1. Missing values are found in category "ZZ".

**California State University, Stanislaus
Flag Pell Eligible**

Rank	Value	Description	Total Number	Number Persisted	Persistence Rate (%)	Lift
1	N	Not Pell Eligible	668	515	77.10	1.02
2	ZZ	Missing Values	593	454	76.56	1.01
3	Y	Pell Eligible	2162	1619	74.88	0.99
Total			3423	2588	75.61	1.00

Notes:

1. Missing values are found in category "ZZ".

**California State University, Stanislaus
ACT Science Score (Equal Bins)**

Rank	Value	Total Number	Number Persisted	Persistence Rate (%)	Lift
1	19.1 to 22.0	331	266	80.36	1.06
2	22.1 or Greater	219	172	78.54	1.04
3	17.0 or Less	368	285	77.45	1.02
4	ZZ	2275	1696	74.55	0.99
5	17.1 to 19.0	230	169	73.48	0.97
Total		3423	2588	75.61	1.00

Notes:

1. Missing values are found in category "ZZ".

**California State University, Stanislaus
Flag Athlete**

Rank	Value	Description	Total Number	Number Persisted	Persistence Rate (%)	Lift
1	N	Not an athlete	2141	1625	75.90	1.00
2	ZZ	Missing Values	1107	839	75.79	1.00
3	Y	Athlete	175	124	70.86	0.94
Total			3423	2588	75.61	1.00

Notes:

1. Missing values are found in category "ZZ".

**California State University, Stanislaus
Honors Scholarship flag**

Rank	Value	Description	Total Number	Number Persisted	Persistence Rate (%)	Lift
1	Y	Honors Scholarship flag	111	89	80.18	1.06
2	N	Not Honors	3312	2499	75.45	1.00
Total			3423	2588	75.61	1.00

**California State University, Stanislaus
ACT Reading Score (Equal Bins)**

Rank	Value	Total Number	Number Persisted	Persistence Rate (%)	Lift
1	23.1 or Greater	234	184	78.63	1.04
2	19.1 to 23.0	278	217	78.06	1.03
3	15.1 to 19.0	348	271	77.87	1.03
4	15.0 or Less	293	225	76.79	1.02
5	ZZ	2270	1691	74.49	0.99
Total		3423	2588	75.61	1.00

Notes:

1. Missing values are found in category "ZZ".

**California State University, Stanislaus
ACT English Score (Equal Bins)**

Rank	Value	Total Number	Number Persisted	Persistence Rate (%)	Lift
1	15.1 to 18.0	233	183	78.54	1.04
2	21.1 or Greater	278	218	78.42	1.04
3	15.0 or Less	367	286	77.93	1.03
4	18.1 to 21.0	275	210	76.36	1.01
5	ZZ	2270	1691	74.49	0.99
Total		3423	2588	75.61	1.00

Notes:

1. Missing values are found in category "ZZ".

**California State University, Stanislaus
Avg. Household Income (Equal Bins)**

Rank	Value	Total Number	Number Persisted	Persistence Rate (%)	Lift
1	\$36,678.01 to \$74,655.00	927	725	78.21	1.03
2	\$129,813.01 or Greater	701	535	76.32	1.01
3	\$36,678.00 or Less	838	623	74.34	0.98
4	\$74,655.01 to \$129,813.00	830	615	74.10	0.98
5	ZZ	127	90	70.87	0.94
Total		3423	2588	75.61	1.00

Notes:

1. Missing values are found in category "ZZ".

**California State University, Stanislaus
FAFSA Position**

Rank	Value	Description	Total Number	Number Persisted	Persistence Rate (%)	Lift
1	10	FAFSA Position 10	5	5	100.00	1.32
2	9	FAFSA Position 9	4	4	100.00	1.32
3	8	FAFSA Position 8	10	9	90.00	1.19
4	2	FAFSA Position 2	402	308	76.62	1.01
5	ZZ	Missing Values	225	172	76.44	1.01
6	4	FAFSA Position 4	116	88	75.86	1.00
7	1	FAFSA Position 1	2342	1768	75.49	1.00
8	5	FAFSA Position 5	63	47	74.60	0.99
9	3	FAFSA Position 3	205	152	74.15	0.98
10	7	FAFSA Position 7	18	13	72.22	0.96
11	6	FAFSA Position 6	33	22	66.67	0.88
Total			3423	2588	75.61	1.00

Notes:

1. Missing values are found in category "ZZ".

**California State University, Stanislaus
Parent income (Equal Bins)**

Rank	Value	Total Number	Number Persisted	Persistence Rate (%)	Lift
1	\$23,107.00 to \$42,954.00	705	543	77.02	1.02
2	\$42,955.00 to \$72,427.00	705	543	77.02	1.02
3	\$72,428.00 or Greater	705	542	76.88	1.02
4	\$23,106.00 or Less	702	522	74.36	0.98
5	ZZ	606	438	72.28	0.96
Total		3423	2588	75.61	1.00

Notes:

1. Missing values are found in category "ZZ".

**California State University, Stanislaus
Flag First Generation**

Rank	Value	Description	Total Number	Number Persisted	Persistence Rate (%)	Lift
1	ZZ	Missing Values	271	212	78.23	1.03
2	Y	First Generation	2574	1950	75.76	1.00
3	N	Not First Generation	578	426	73.70	0.97
Total			3423	2588	75.61	1.00

Notes:

1. Missing values are found in category "ZZ".

**California State University, Stanislaus
Years since HS Graduation**

Rank	Value	Total Number	Number Persisted	Persistence Rate (%)	Lift
1	5	1	1	100.00	1.32
2	6	1	1	100.00	1.32
3	1	39	30	76.92	1.02
4	0	3365	2547	75.69	1.00
5	3	4	3	75.00	0.99
6	2	13	6	46.15	0.61
Total		3423	2588	75.61	1.00

**California State University, Stanislaus
Total Gift Funds (Equal Bins)**

Rank	Value	Total Number	Number Persisted	Persistence Rate (%)	Lift
1	\$1,750.01 to \$4,686.00	781	598	76.57	1.01
2	\$4,686.01 to \$6,287.00	932	705	75.64	1.00
3	\$6,287.01 or Greater	619	466	75.28	1.00
4	ZZ	311	234	75.24	1.00
5	\$1,750.00 or Less	780	585	75.00	0.99
Total		3423	2588	75.61	1.00

Notes:

1. Missing values are found in category "ZZ".

**California State University, Stanislaus
In-State Tuition Eligibility Flag**

Rank	Value	Total Number	Number Persisted	Persistence Rate (%)	Lift
1	1	3398	2570	75.63	1.00
2	0	25	18	72.00	0.95
Total		3423	2588	75.61	1.00

**California State University, Stanislaus
FAFSA Received Flag**

Rank	Value	Total Number	Number Persisted	Persistence Rate (%)	Lift
1	0	364	276	75.82	1.00
2	1	3059	2312	75.58	1.00
Total		3423	2588	75.61	1.00