

Graduation Rate Report  
March 18, 2016  
Victor Luevano  
Center for Excellence in Graduate Education

## **General Notes**

These data are drawn from the Enrollment Reporting System (Student, and Degree) files available through PeopleSoft from 2000-2015.

The “Matriculation Term” was used as the start date to determine time to graduation and graduation rates. Of the options explored, this was the most consistently available and least ambiguous. However, it likely overestimates the time to degree for some students. In some cases it appears as though the stated matriculation term might refer to when the student started at CSU Stanislaus as an undergraduate rather than as a graduate or post-baccalaureate student. Unfortunately, there does not appear to be straightforward way to determine when that would be the case in these data.

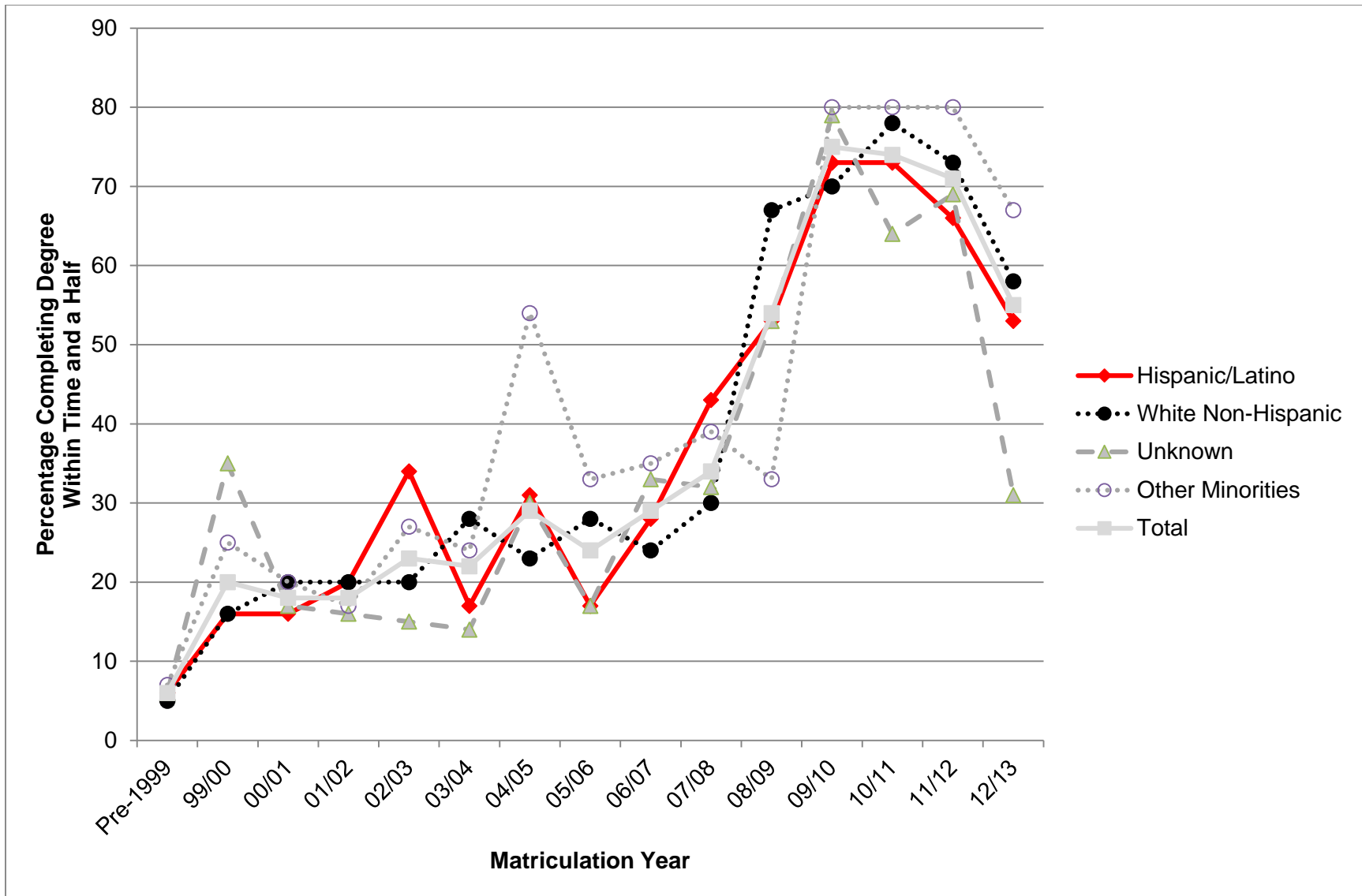
Graduation rates are based on the number of students that completed the degree within “time and a half.” What would constitute finishing “on time” (roughly equivalent to finishing a baccalaureate degree in four years; “time and a half” being roughly equivalent to six years) was calculated using the number of units required for the particular graduate degree program. After consultation with the Graduate Council, graduation rates were computed in two ways. The first, which is consistent with how the baseline data were originally assessed, calculates the expected time to degree based on 6 units per semester (12 per year). For many programs this produced values that matched the expected time reported by the program directors. The second method calculated the expected time based on 12 units per semester (24 per year). This method obviously provides a smaller window for finishing a degree “on time,” but fits better with the way graduate students in some programs take courses.

Tables 1 and 2 show the data used to make Figures 1 and 2, along with the number of students who completed the degree “late” or have yet to complete the degree at all. Additionally, these tables provide information for those with matriculation dates during the 2013/2014 and 2014/2015 academic years.

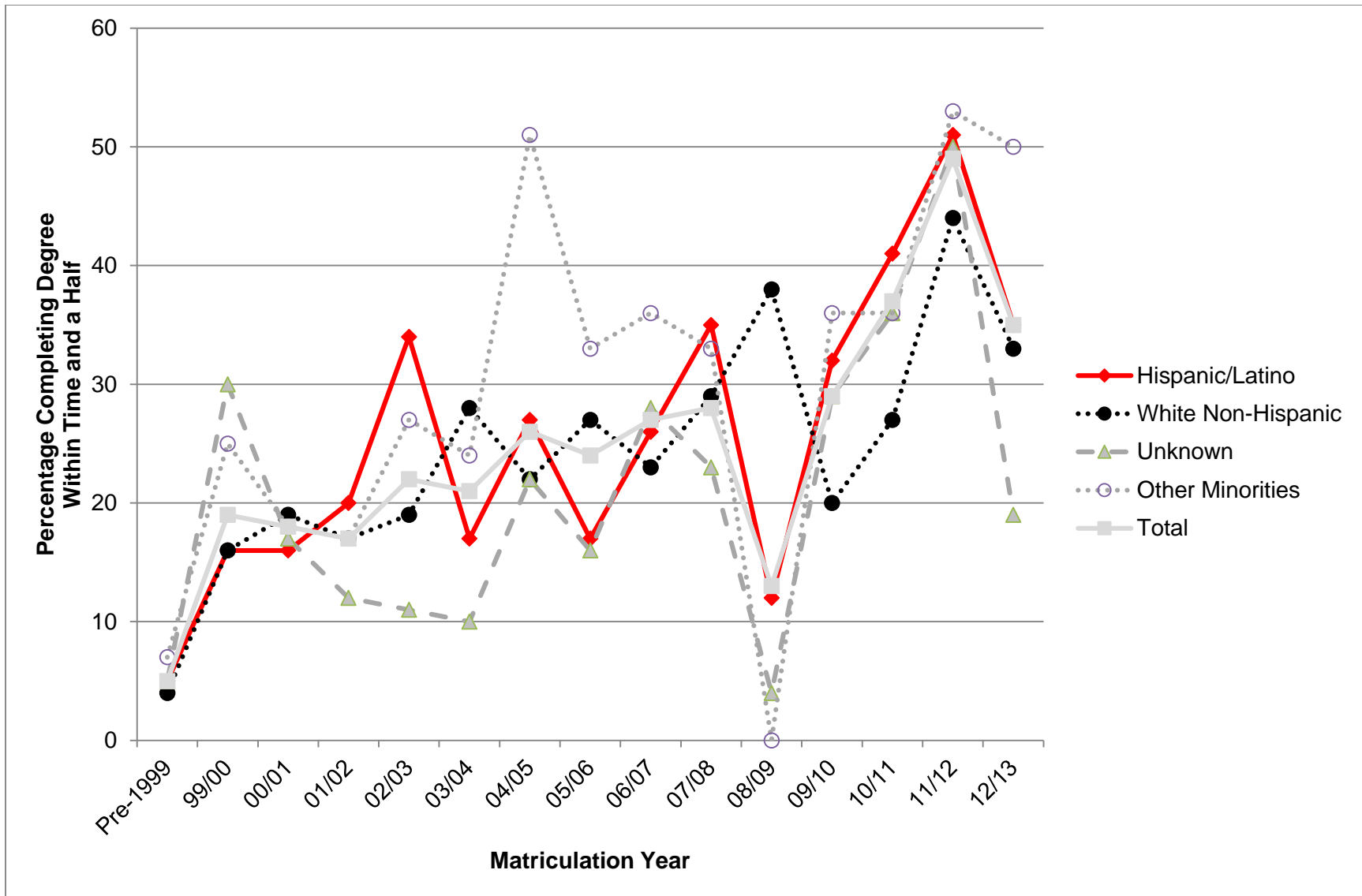
## **Summary**

The baseline data report, which was based on the ten years prior to the implementation of CEGE included graduation rates for those with matriculation dates up to the 2007/2008 academic year. Figures 1 and 3 include the next five years. As can be seen in Figure 1, the graduation rates were substantially improved starting among those who started in 2008/2009 (the first group that would certainly be served by CEGE, which started in 2010). The graduation rates were even higher among those who started during the next few academic years. These data certainly suggest that the programs offered by CEGE improved graduation rates for all students, including Latino students. Using the more stringent method for graduation rates (Figure 2) provides a similar, but certainly less striking pattern of results.

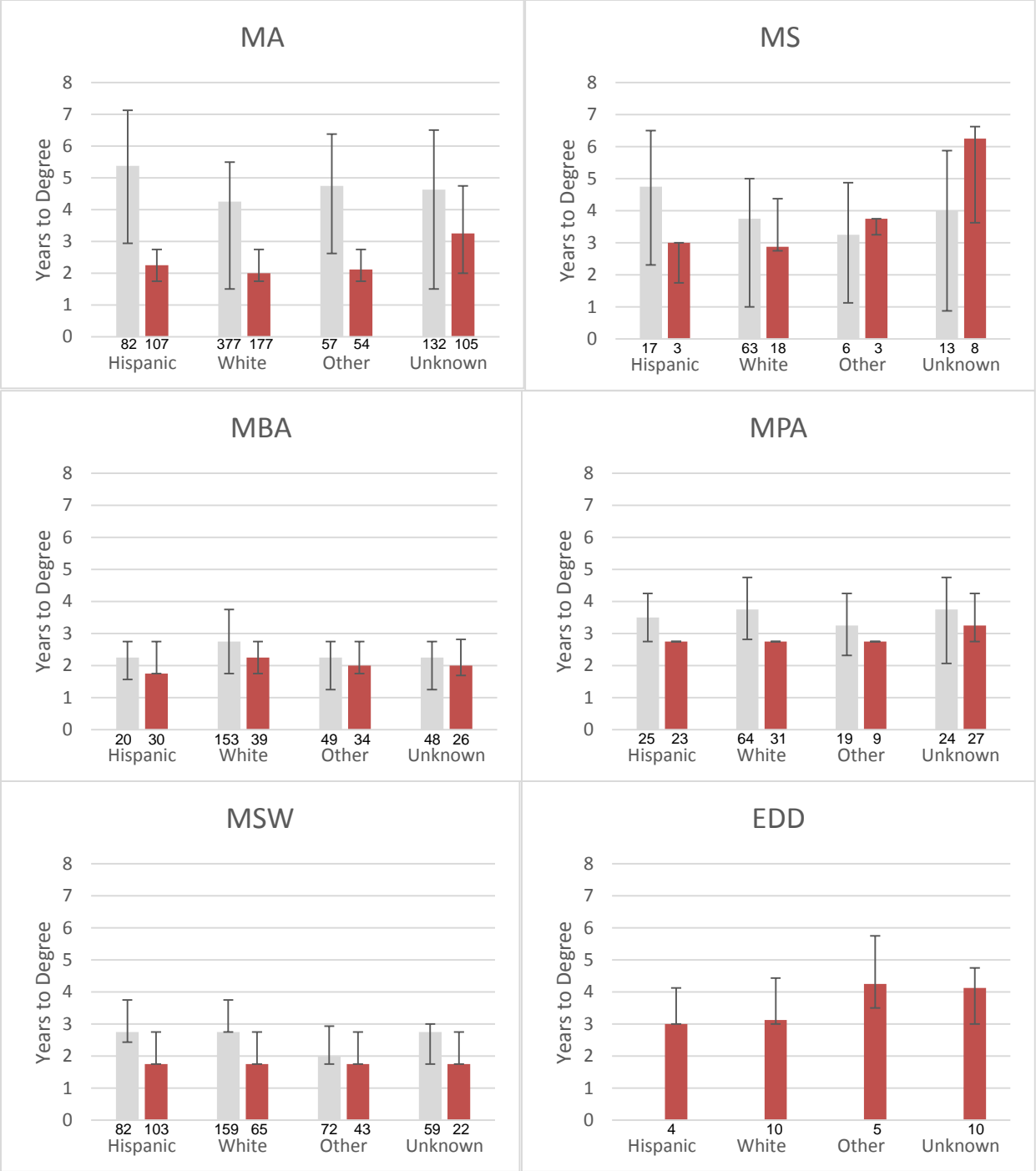
An examination of the median time to earn a degree (see Figure 3) also provides evidence that the programs put on by CEGE were effective. Across all degree types, but particularly for the MA degrees, median time to degree tended to be lower during the five years that CEGE was in effect compared to the previous ten years. This also appears to be true for the MS degrees, even though two MS programs (both in Psychology) increased from 50 to 60 units in 2012. There are no comparison data for the EDD programs since no EDD degrees were awarded during the baseline period.



**Figure 1.** Graduation rates (using 6 units per semester) by ethnic category across matriculation years.



**Figure 2.** Graduation rates (using 12 units per semester) by ethnic category across matriculation years.



**Figure 3.** Median time to degree by degree type and ethnicity. Error bars capture middle 50%. Light grey bars show degrees awarded between the 1999/2000 and 2009/2010 academic years. Red bars show degrees awarded between the 2010/2011 and 2014/2015 academic years. The small numbers under each bar are the number of observations in each category.

**Table 1.**

Number, and percentage, of students completing the degree on-time (OT; within the time and a half window), completing the degree late (LT; earned after the time and a half window), and not earning the degree (ND) by ethnicity organized by matriculation year

Matriculation Year		Hispanic/Latino			White Non-Hispanic			Unknown			Other Minorities			Total		
		OT	LD	ND	OT	LT	ND	OT	LT	ND	OT	LT	ND	OT	LD	ND
Pre-99	#	<b>5</b>	39	44	<b>16</b>	168	133	<b>6</b>	52	38	<b>4</b>	26	32	<b>31</b>	285	247
	%	<b>6</b>	44	50	<b>5</b>	53	42	<b>6</b>	54	40	<b>7</b>	42	52	<b>6</b>	50	44
99/00	#	<b>6</b>	12	20	<b>21</b>	74	40	<b>15</b>	18	10	<b>6</b>	9	9	<b>48</b>	113	79
	%	<b>16</b>	32	53	<b>16</b>	55	30	<b>35</b>	42	23	<b>25</b>	38	38	<b>20</b>	47	33
00/01	#	<b>10</b>	16	38	<b>34</b>	71	68	<b>9</b>	22	23	<b>8</b>	13	19	<b>61</b>	122	148
	%	<b>16</b>	25	59	<b>20</b>	41	39	<b>17</b>	41	43	<b>20</b>	33	48	<b>18</b>	37	45
01/02	#	<b>10</b>	19	22	<b>34</b>	71	68	<b>9</b>	17	32	<b>7</b>	16	19	<b>55</b>	118	130
	%	<b>20</b>	37	43	<b>20</b>	41	39	<b>16</b>	29	55	<b>17</b>	38	45	<b>18</b>	39	43
02/03	#	<b>21</b>	12	28	<b>37</b>	70	75	<b>8</b>	20	26	<b>16</b>	18	26	<b>82</b>	120	155
	%	<b>34</b>	20	46	<b>20</b>	39	41	<b>15</b>	37	48	<b>27</b>	30	43	<b>23</b>	34	43
03/04	#	<b>7</b>	6	29	<b>29</b>	25	51	<b>7</b>	20	24	<b>10</b>	12	19	<b>53</b>	63	123
	%	<b>17</b>	14	69	<b>28</b>	24	49	<b>14</b>	39	47	<b>24</b>	29	46	<b>22</b>	26	52
04/05	#	<b>17</b>	10	28	<b>35</b>	51	67	<b>19</b>	18	26	<b>19</b>	9	7	<b>90</b>	88	128
	%	<b>31</b>	18	51	<b>23</b>	33	44	<b>30</b>	29	41	<b>54</b>	26	20	<b>29</b>	29	42
05/06	#	<b>9</b>	12	31	<b>36</b>	31	64	<b>10</b>	22	26	<b>13</b>	6	20	<b>68</b>	71	141
	%	<b>17</b>	23	60	<b>28</b>	24	49	<b>17</b>	38	45	<b>33</b>	15	51	<b>24</b>	25	50
06/07	#	<b>20</b>	7	45	<b>30</b>	15	78	<b>27</b>	17	38	<b>16</b>	7	22	<b>93</b>	46	183
	%	<b>28</b>	10	63	<b>24</b>	12	63	<b>33</b>	21	46	<b>35</b>	16	49	<b>29</b>	14	57
07/08	#	<b>21</b>	6	22	<b>25</b>	22	36	<b>31</b>	25	41	<b>15</b>	3	21	<b>92</b>	56	120
	%	<b>43</b>	12	45	<b>30</b>	27	43	<b>32</b>	26	42	<b>39</b>	8	54	<b>34</b>	21	45
08/09	#	<b>9</b>	1	7	<b>16</b>	0	8	<b>24</b>	13	8	<b>4</b>	1	7	<b>53</b>	15	30
	%	<b>53</b>	6	41	<b>67</b>	0	33	<b>53</b>	29	18	<b>33</b>	8	58	<b>54</b>	15	31
09/10	#	<b>27</b>	1	9	<b>28</b>	3	9	<b>19</b>	2	3	<b>20</b>	2	3	<b>94</b>	8	24
	%	<b>73</b>	2.7	24	<b>70</b>	7.5	23	<b>79</b>	8	14	<b>80</b>	8	12	<b>75</b>	6	19
10/11	#	<b>58</b>	2	20	<b>81</b>	4	19	<b>30</b>	4	13	<b>31</b>	1	7	<b>200</b>	11	59
	%	<b>73</b>	3	25	<b>78</b>	4	18	<b>64</b>	9	28	<b>80</b>	3	18	<b>74</b>	4	22
11/12	#	<b>55</b>	0	29	<b>64</b>	0	24	<b>18</b>	0	8	<b>31</b>	1	7	<b>168</b>	0	70
	%	<b>66</b>	0	35	<b>73</b>	0	27	<b>69</b>	0	31	<b>80</b>	3	18	<b>71</b>	0	29
12/13	#	<b>53</b>	0	48	<b>61</b>	0	44	<b>8</b>	0	18	<b>28</b>	0	14	<b>150</b>	0	124
	%	<b>53</b>	0	48	<b>58</b>	0	42	<b>31</b>	69	0	<b>67</b>	33	0	<b>55</b>	0	45
13/14	#	<b>41</b>	0	83	<b>33</b>	0	80	<b>8</b>	0	26	<b>16</b>	0	40	<b>98</b>	0	229
	%	<b>33</b>	0	67	<b>29</b>	0	71	<b>24</b>	0	77	<b>29</b>	0	71	<b>30</b>	0	70
14/15	#	<b>0</b>	0	96	<b>5</b>	0	105	<b>1</b>	0	18	<b>1</b>	0	45	<b>7</b>	0	264
	%	<b>0</b>	0	100	<b>5</b>	0	96	<b>5</b>	0	95	<b>2</b>	0	98	<b>3</b>	0	97
Total	#	<b>321</b>	191	599	<b>580</b>	600	958	<b>249</b>	250	378	<b>245</b>	123	319	<b>1443</b>	1116	2254
	%	<b>29</b>	17	54	<b>27</b>	28	45	<b>28</b>	29	43	<b>36</b>	18	46	<b>30</b>	23	47
	# Missing data		139			288		108				290		825		

**Table 2.**

Based on 12 units per semester. Number, and percentage, of students completing the degree on-time (OT; within the time and a half window), completing the degree late (LT; earned after the time and a half window), and not earning the degree (ND) by ethnicity organized by matriculation year

Matriculation Year	Hispanic/Latino			White Non-Hispanic			Unknown			Other Minorities			Total			
	OT	LD	ND	OT	LT	ND	OT	LT	ND	OT	LT	ND	OT	LT	ND	
Pre-99	#	<b>4</b>	40	44	<b>14</b>	170	133	<b>5</b>	53	38	<b>4</b>	26	32	<b>27</b>	289	247
	%	<b>5</b>	46	50	<b>4</b>	54	42	<b>5</b>	55	40	<b>7</b>	52	42	<b>5</b>	51	44
99/00	#	<b>6</b>	12	20	<b>21</b>	74	40	<b>13</b>	20	10	<b>6</b>	9	9	<b>46</b>	115	79
	%	<b>16</b>	32	53	<b>16</b>	55	30	<b>30</b>	47	23	<b>25</b>	38	38	<b>19</b>	48	33
00/01	#	<b>10</b>	16	38	<b>33</b>	72	68	<b>9</b>	22	23	<b>7</b>	14	19	<b>59</b>	124	148
	%	<b>16</b>	25	59	<b>19</b>	42	39	<b>17</b>	41	43	<b>18</b>	35	48	<b>18</b>	38	45
01/02	#	<b>10</b>	19	22	<b>26</b>	69	57	<b>7</b>	19	32	<b>7</b>	16	19	<b>50</b>	123	130
	%	<b>20</b>	37	43	<b>17</b>	45	38	<b>12</b>	33	55	<b>17</b>	38	45	<b>17</b>	41	43
02/03	#	<b>21</b>	12	28	<b>35</b>	72	75	<b>6</b>	22	26	<b>16</b>	18	26	<b>78</b>	124	155
	%	<b>34</b>	20	46	<b>19</b>	40	41	<b>11</b>	41	48	<b>27</b>	30	43	<b>22</b>	35	43
03/04	#	<b>7</b>	6	29	<b>29</b>	25	51	<b>5</b>	22	24	<b>10</b>	12	19	<b>51</b>	65	123
	%	<b>17</b>	14	69	<b>28</b>	24	49	<b>10</b>	43	47	<b>24</b>	29	46	<b>21</b>	27	52
04/05	#	<b>15</b>	12	28	<b>33</b>	53	67	<b>14</b>	23	26	<b>18</b>	10	7	<b>80</b>	98	128
	%	<b>27</b>	22	51	<b>22</b>	35	44	<b>22</b>	37	41	<b>51</b>	29	20	<b>26</b>	32	42
05/06	#	<b>9</b>	12	31	<b>35</b>	32	64	<b>9</b>	23	26	<b>13</b>	6	20	<b>66</b>	73	141
	%	<b>17</b>	23	60	<b>27</b>	24	49	<b>16</b>	40	45	<b>33</b>	15	51	<b>24</b>	26	50
06/07	#	<b>19</b>	8	45	<b>28</b>	17	78	<b>23</b>	21	38	<b>16</b>	7	22	<b>86</b>	53	183
	%	<b>26</b>	11	63	<b>23</b>	14	63	<b>28</b>	26	46	<b>36</b>	16	49	<b>27</b>	17	57
07/08	#	<b>17</b>	10	22	<b>24</b>	23	36	<b>22</b>	34	41	<b>13</b>	5	21	<b>76</b>	72	120
	%	<b>35</b>	20	45	<b>29</b>	28	43	<b>23</b>	35	42	<b>33</b>	13	54	<b>28</b>	27	45
08/09	#	<b>2</b>	8	7	<b>9</b>	7	8	<b>2</b>	35	8	<b>0</b>	5	7	<b>13</b>	55	30
	%	<b>12</b>	47	41	<b>38</b>	29	33	<b>4</b>	78	18	<b>0</b>	42	58	<b>13</b>	56	31
09/10	#	<b>12</b>	16	9	<b>8</b>	23	9	<b>7</b>	14	3	<b>9</b>	13	3	<b>36</b>	66	24
	%	<b>32</b>	43	24	<b>20</b>	58	23	<b>29</b>	58	13	<b>36</b>	52	12	<b>29</b>	52	19
10/11	#	<b>33</b>	27	20	<b>35</b>	50	19	<b>17</b>	17	13	<b>14</b>	18	7	<b>99</b>	112	59
	%	<b>41</b>	34	25	<b>27</b>	24	49	<b>36</b>	36	28	<b>36</b>	46	18	<b>37</b>	42	22
11/12	#	<b>43</b>	12	29	<b>39</b>	25	24	<b>13</b>	5	8	<b>21</b>	10	9	<b>116</b>	52	70
	%	<b>51</b>	14	35	<b>44</b>	28	27	<b>50</b>	19	31	<b>53</b>	25	23	<b>49</b>	22	29
12/13	#	<b>35</b>	18	48	<b>35</b>	26	44	<b>5</b>	3	18	<b>21</b>	7	14	<b>96</b>	54	124
	%	<b>35</b>	18	48	<b>33</b>	25	42	<b>19</b>	12	69	<b>50</b>	17	33	<b>35</b>	20	45
13/14	#	<b>38</b>	3	83	<b>31</b>	2	80	<b>8</b>	0	26	<b>16</b>	0	40	<b>93</b>	5	229
	%	<b>31</b>	2	67	<b>27</b>	2	71	<b>24</b>	0	77	<b>29</b>	0	71	<b>28</b>	2	70
14/15	#	<b>0</b>	0	96	<b>5</b>	0	105	<b>1</b>	0	18	<b>1</b>	0	45	<b>7</b>	0	264
	%	<b>0</b>	0	100	<b>5</b>	0	96	<b>5</b>	0	95	<b>2</b>	0	98	<b>3</b>	0	97
Total	#	<b>281</b>	231	599	<b>440</b>	740	958	<b>166</b>	333	378	<b>192</b>	176	319	<b>1079</b>	1480	2254
	%	<b>25</b>	21	54	<b>21</b>	35	45	<b>19</b>	38	43	<b>28</b>	26	46	<b>22</b>	31	47