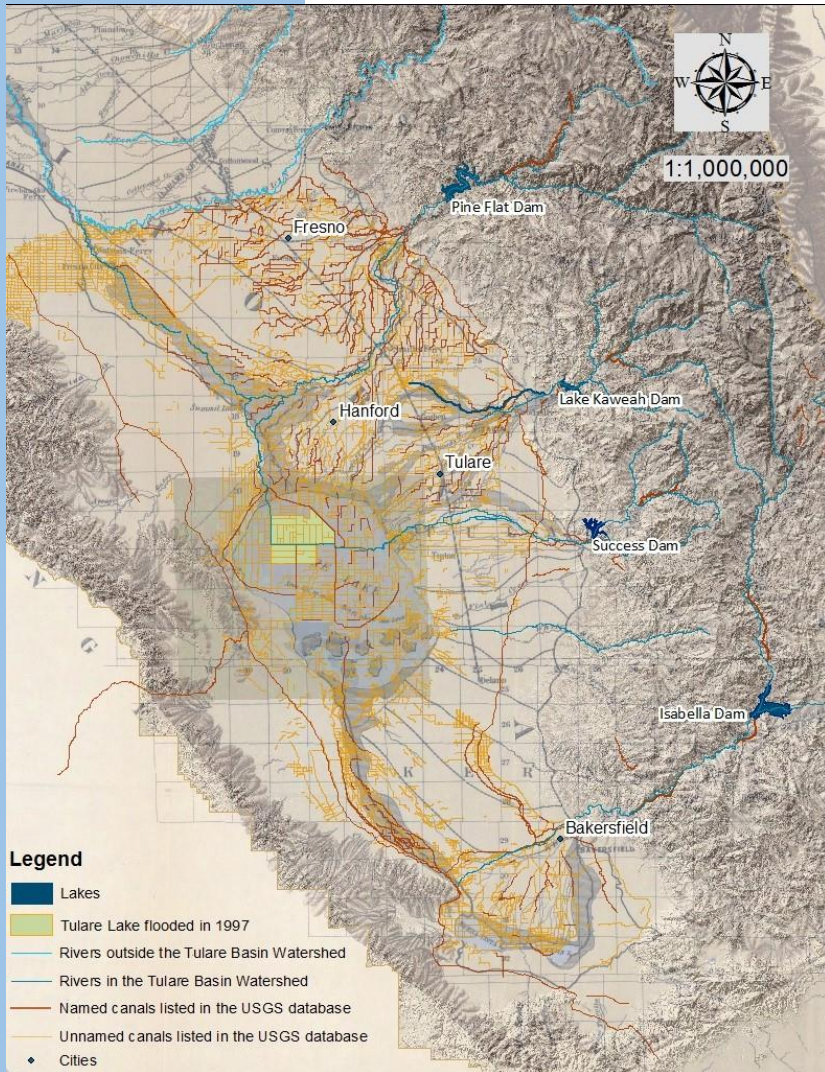


The Tulare Basin Watershed

A Map of the Manmade Canal Systems

Today Tulare is a dry lake bed of occupied primarily by farmland. Over 8,000 miles of manmade canals convey irrigation water throughout the region. In 2015, the combined agricultural production of Tulare, Kern and Fresno Counties exceeded \$20 billion.



In the 1860's settlers began to divert water from the natural courses to provide for early agriculture.

Between 1954 and 1962 a number of dams were built on the four main rivers. These dams formed Pine Flat Lake, Lake Kaweah, Lake Success and Lake Isabella.

There are years in which Tulare lake reappears. In 1997 the lake covered an area of 64 square miles. As a precaution to agricultural losses, many miles of levees have been constructed to contain the floods. In 2017, concerns of flooding in the city of Corcoran led to a \$14 million levee improvement project.

There are concerns regarding the overuse of water resources in the region including the loss of ground water, land subsidence and the loss of domestic water for residents of rural communities in the region.

It is estimated that the State of California has spent more than \$148 million bringing domestic drinking water to communities in Tulare County.



1997 satellite imagery



Pine Flat Dam, Kings River



Bridge over the Faint-Kern Canal