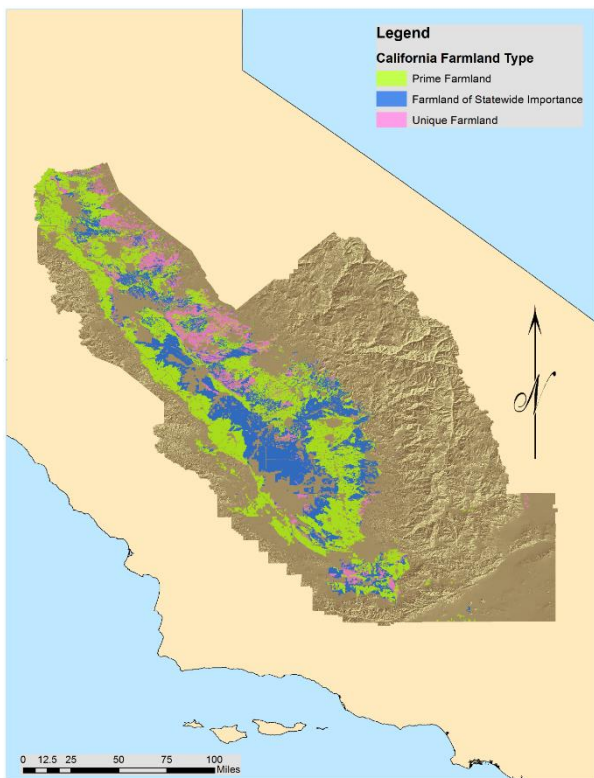


San Joaquin Valley Agriculture



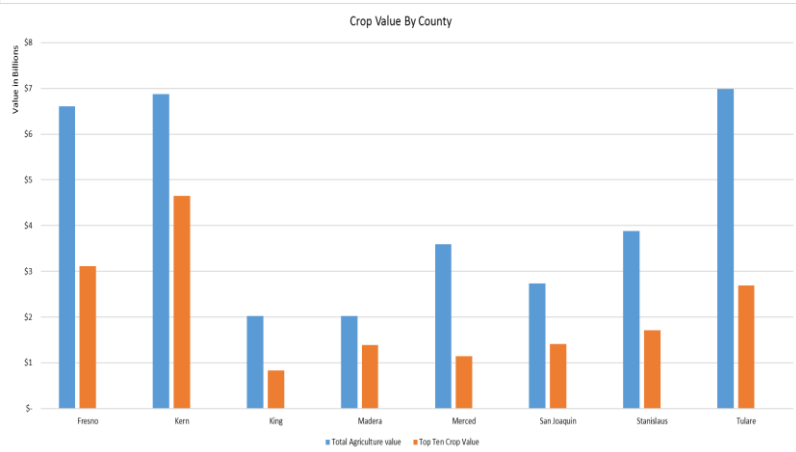
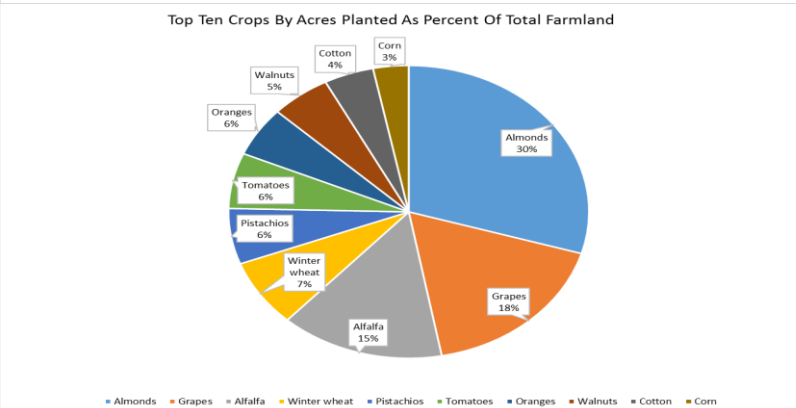
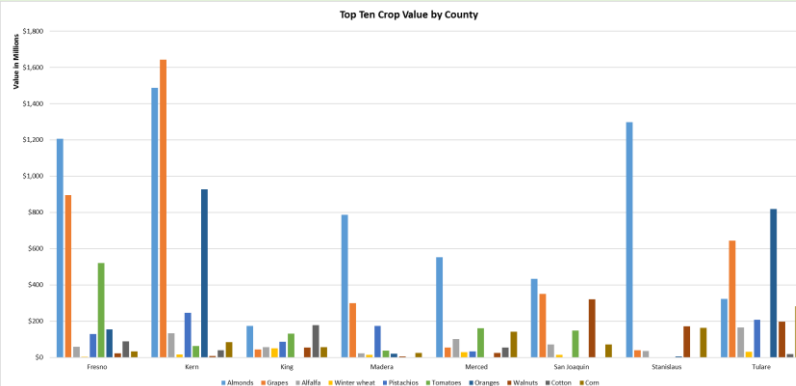
Above: Map showing the location of the three types of farmland designated by the California Department of Conservation.

Right Top: Graph showing the top ten crop values by county.

Right Middle: Graph showing Total Agriculture value and the value of the top ten crops.

Right Bottom: Pie chart showing acreage by crop type of the San Joaquin Valley.

The Graphs and Charts are based on 2015 Crop Reports produced by the counties.



The San Joaquin Valley is home to some of the premier agricultural land in the United States. Our region produces a wide variety of Agriculture products that are exported around the world. The agriculture industry is a huge part of the economy of the San Joaquin Valley. According to the 2015 crop reports for the 8 counties in our region, the total value of agriculture products was \$34,706,819,390. The top ten crops of the region in order are; Almonds, Grapes, Alfalfa, Wheat, Pistachios, Tomatoes, Oranges, Walnuts, Cotton, and Corn. These ten products contribute \$ 16,575,261,000 or 48% to the total value of Agricultural products. The importance of Agriculture to the economy of the San Joaquin Valley cannot be overstated.

The San Joaquin Valley is approximately 27,478 square miles in area. Of this area, 7948 square miles are considered Prime Farmland, Farmland of Statewide Importance, or Unique Farmland. These classifications are based upon research done by the California Department of Conservation: Farmland Mapping and Monitoring Program. These designations are based on soil, climate, and terrain quality as it pertains to crop yields. The total acres of farmland is 5,087,200, of which 3,752,302 or 74% is planted with one of the top ten crops.