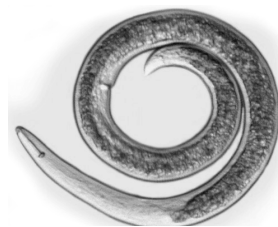


GENERAL BIOLOGY I (LAB)
BIOL 1050 SECTIONS 002, 004, 008 SPRING 2012



Where: N211

When: T 9:00-11:50 am (002), Th 9:00-11:50 am (004), W 6:00-8:50pm (008)

Instructor: Katherine M. Schroeder

Office: N263

Office Hours: T, Th 12:00-1:00pm

Contact Information: kschroeder@csustan.edu

Scope of lab course: Introduction for biology majors to the fundamental aspects of cellular and molecular biology: cellular structure and function, genetics, microevolution and speciation. Satisfies G.E.

Required Materials: Symbiosis Lab Manual (only available in the Bookstore)

Note: Lab titles in Italics are not in Manual- separate handout or online copy will be provided.

Notepaper, Calculator (You cannot use your Phone!)

Blackboard site: I will post lab information for my sections on the Blackboard site.

Lab Schedule

Week Of	Topic
Jan 26-29	No lab meeting
Jan 31- Feb 2	Student Survey, Lab Safety, Be sure you attend class if you want to keep your seat!
Feb 7-9	Lab 1 Scientific Investigation Write up due next week
Feb 14-16	Lab 2 Review Scientific investigation, student graphs, Microscopes and Cells
Feb 21-23	Lab 3 Finish Microscopes and Cells, Osmosis Exercise Write up due next week
Feb 28- Mar 1	Lab 4 Enzymes <i>Set up seed germination</i>
Mar 6-8	Lab 5 Collect and analyze data from seeds, Respiration/Fermentation Write up due next week
Mar 13-15	Lab 6 Photosynthesis Write up due next week
Mar 20-22	Lab 7 Mitosis, Meiosis
Mar 27-29	Lab 8 Solving genetics problems
Apr 3-5	Lab 9 <i>Bioinformatics, Introduction to Worm Biology</i> Write up due next lab meeting
Apr 10-12	Spring break- no lab
Apr 17-19	Lab 10 <i>Pipetting, DNA Isolation (worm picking), PCR</i>
Apr 24-26	Lab 11 Evolution (dress for outdoors), <i>Gel Electrophoresis</i> Write up due next week
May 1-3	Lab 12: Population Genetics: Hardy –Weinberg
May 8-10	Lab 13: <i>Personal Genomics</i>
May 15-17	Comprehensive Lab Practical 100 points



Quizzes/Journals/Exams:

- There will be a 10 point quiz every week, starting week of Feb 14. Each quiz will cover previous week's lab exercises and test preparation for current week.
- Your lowest quiz score will be dropped.
- Journals (lab write-ups) are due the following week after they are assigned. Be sure to follow your instructor's directions when doing the write-ups. These are not Chem Lab style write-ups. Journals are due at the beginning of class. (Format to be discussed in class.)



<u>Assignment</u>	<u>Points</u>
Quizzes (11 x 10 points)	110
Lab Write-ups (6 x 15 points)	90
Lab Final Practical Exam	100
TOTAL POINTS	300



Make-up:

If you know you have a conflict on the day of the Lab final exam, please see me beforehand so we can discuss the situation. If something comes up unexpectedly on the day of the exam, please e-mail me. Don't 'let it ride' and plan on discussing it with me later. If I don't hear from you promptly, you get a 0.

Lab Write-ups

Lab Write-ups are due at the beginning of the lab. See the lab schedule for the due dates. Late lab reports are penalized 5 pts. per day. **Lab write-ups are not group activities.** Do your own work and don't copy the answers from someone else's report. Save your lab reports. They are valuable study guides.

Student Conduct:

Plan on working with a partner. Most labs will run the full three hours. Attendance is required. Do not enroll in this class if you have conflicts or other commitments during your lab period. Be on time for class. During the first few minutes of each class period we will discuss the day's activities and take the quiz. Attendance will be considered when rounding your grades up or down. Do not leave the classroom in the middle of a discussion. **Do not use cell phones, iPods, or other electronic devices during class.** Computers are only allowed in class as a tool for note taking or class exercises.