

# Biology 1020 World of Biology Laboratory (Spring 2012)



**Instructor: Roxana Guardado**

**Office:** N-253

**Office Hours:** Monday 11- 12pm

**Contact Information:** rguardado@csustan.edu

**Required Text:** *World of Biology 1020 Laboratory Workbook*, 4th Edition

## II. Course Description and GE Goals

World of Biology is designed to provide students with laboratory and field experience in various biological areas. We will explore many of the topics that are covered in Biology 1010, but in 1020 we have the luxury of actually doing some of the experiments discussed in lecture. Many students find the interactive, hands-on component of 1020 to be exciting, and enjoy working collaboratively on projects with other students and the instructor.

1. Provide an overview of basic knowledge, principles, methodologies, theories, and perspectives in biology.
2. Offer opportunities to work in groups with other students to practice effective communication about concepts and issues in biology.
3. Provide a broad understanding and appreciation of biology and encourage continuous inquiry and lifelong learning.
4. Provide the framework to critically evaluate and use information from various scientific sources to answer questions relevant to biology.
5. Understand the relationships between the fields of biology, chemistry, physics, geology and other sciences.
6. Appreciate the interdependence of humans, natural ecosystems, and the diversity of life on earth.
7. Develop more informed and responsible citizens with respect to issues concerning the living world.

## III. Grading

Grades will be based on laboratory write-ups, quizzes, final exam (optional), and microscope care. The final will be comprehensive and stress concepts addressed in each lab. We will be using microscopes for four laboratories. During these labs, up to 5 points per lab may be deducted if microscopes and slides are not handled or stored properly.

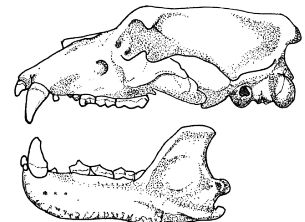
90 Quizzes (10@ 10 points per quiz, lowest will be dropped)

Laboratory write-ups (11 @ 10 pts. per lab.)

110

**Total**

**200\***



\*The Final Exam is optional and can be worth up to 20 points extra credit.

### Grade Calculations

Grades will be based on the percentage of points earned:

**A 90-100% B 80-89% C 70-79% D 60-69% F 0-59%**

**If you take the credit/no credit option: CR (70-100%), NC (0-69%)**

**February 22nd** is the last day you may change your grading option to credit/no credit. To do so you must have your instructor sign a yellow add/drop form. It is your responsibility to turn this form in to Admissions and Records. Consult with your advisor before making your decision. Grades will not be changed once they have been submitted. The last day to drop the course entirely is also February 22nd. Please note that Biology 1020 and Biology 1010 are graded separately.

#### **IV. Laboratory Policies**

World of Biology is a laboratory course and as such requires your presence. Your grade is based on laboratory write-ups, quizzes, and microscope care. You can only get points for lab write-ups and quizzes if you attend lab. Because the laboratory setups change from class to class, it is not possible to makeup missed laboratories. Unexcused absences will result in no points for lab write-ups and also in no points for the quiz given that day. You can drop your lowest quiz, but there is no way to make up for missed labs.

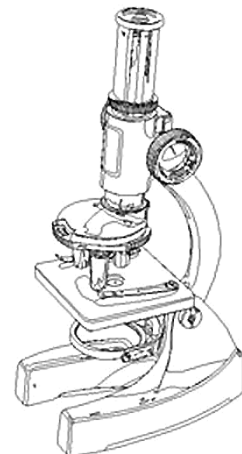
Labs are due at the beginning of the next class. For example, turn in your Scientific Method lab write-up at the beginning of the lab on Cells and Microscopes. I do not accept late labs, that said you get one free pass to turn in a late lab and get credit. For most of the laboratories, you will work in groups of two or four students. However, each student should turn in his/her own write-up for each laboratory. Do not simply write the same answers as your lab partner. Instead, synthesize results and put your answers in your own words. Write-ups will be graded based on completeness, accuracy, and legibility.

Quizzes will begin promptly at the beginning of lab. If you are late you will have less time to complete your quiz. If you arrive after a quiz has been collected you will not be able to take that quiz.

I have a no-tolerance policy for cheating. Students cheating on quizzes or exams, representing the work of others as their own, or turning in lab assignments for labs not attended will certainly receive a zero for that assignment and will receive an F for the class and the matter will be turned over to the appropriate student disciplinary committee.

#### **V. Laboratory Schedule**

<b>Thurs</b>	<b>LAB TOPIC</b>
Feb 2	Attendance, Safety
Feb 9	Nature of Science
Feb 16	Cells & Microscopes
Feb 23	Transport
March 1	Metabolism
March 8	Mitosis
March 15	Genetics
March 22	Human Physiology
March 29	Plant Biology
April 5	Animal Adaptations
April 12	Spring Break- NO LAB



April 19	Evolution*
April 26	Populations
May 3	Ecology
May 10	Final Exam (optional)

\*The Evolution Lab will be conducted outside. Please come prepared for the weather. Bring a calculator.

