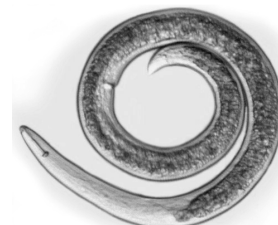


BIOL 1050-002, FALL 2012



Instructor: Dr. Katherine M. Schroeder

Office: N252

Office Hours: Tues 1-3, or by appointment

Contact Information: kschroeder@csustan.edu, 667-3838

Required Materials: Symbiosis Lab Manual (only available in the Bookstore)

Notepaper, Calculator (You cannot use your phone on a quiz or lab exam.)

Blackboard site: I will post lab information on the Blackboard site. Check it weekly!

Lab Schedule

Week Of	Topic
Aug 28	Student Survey, Lab Safety, Be sure you attend class if you want to keep your seat!
Sept 4	Lab 1 Scientific Investigation Write up due next week
Sept 11	Lab 2 Microscopes and Cells
Sept 18	Lab 3 Osmosis Exercise <i>Set up seed germination</i> Write up due next week
Sept 25	Lab 4 Collect and analyze data from seeds, Enzyme Exercise
Oct 2	Lab 5 , Respiration/Fermentation Exercise, Demonstrate ability to use microscope Write up due next week
Oct 9	Lab 6 Photosynthesis (no class on Wed*) Write up due in two weeks
Oct 16	Lab 7 Mitosis, Meiosis
Oct 23	Lab 8 Solving genetics problems
Oct 30	Lab 9 Bioinformatics, Introduction to Worm Biology Write up due next lab meeting
Nov 6	Lab 10 Pipetting, DNA Isolation (worm picking), PCR
Nov 13	Lab 11 Evolution (dress for outdoors), <i>Gel Electrophoresis</i> Write up due next week
Nov 20	No class
Nov 27	Lab 12: Population Genetics: Hardy –Weinberg
Dec 4	Lab 13: Comprehensive Lab Practical 100 points
Dec 11	No Lab meeting. Reading Day

Quizzes/Write-ups/Exams

- There will be an 11-point quiz every week (except day of Comprehensive Lab Practical), starting with Lab 2. Each quiz will cover previous week's lab exercises and may test preparation for the current week. The lowest quiz grade will be dropped.
- Lab write-ups are usually due the following week after they are assigned. See the lab schedule for the due dates. They are due at the **beginning** of the lab and are penalized 5 pts. per day late. Be sure to follow your instructor's directions when doing the write-ups. These are not Chem Lab style write-ups. **Lab write-ups are not group activities.** Do your own work and don't copy the answers from someone else's report. Save your lab reports. They are valuable study guides.



<u>Assignment</u>	<u>Points</u>
Quizzes (10 x 11 points)	110
Lab Write-ups (6 x 15 points)	90
Lab Final Practical Exam	100
TOTAL POINTS	300



Make-up

If you know you have a conflict on the day of the Lab final exam, please see me beforehand so we can discuss the situation. If something comes up unexpectedly on the day of the exam, please e-mail me. Don't 'let it ride' and plan on discussing it with me later. If I don't hear from you promptly, you get a 0.

Student Conduct

Plan on working with a partner. Most labs will run the full three hours. Attendance is required. Do not enroll in this class if you have conflicts or other commitments during your lab period. Be on time for class. During the first few minutes of each class period we will discuss the day's activities and take the quiz. Attendance will be considered when rounding your grades up or down. Do not leave the classroom in the middle of a discussion. **Do not use cell phones, iPods, or other electronic devices during class.** Computers are only allowed in class as a tool for note taking or class exercises.

If you are repeating the class- Don't repeat your mistakes! Don't assume you can skip or leave early. You are actually at more risk of failing than a new student.