

California State University | Sta

ZOOL 2235, HUMAN PHYSIOLOGY

SPRING 2018

Instructor:	Nora Hallquist-Hulse, Ph.D.	Office Hours:	R 9:30-10:30
Office:	N254		Or by appointment
Phone:	(209) 667-3476	Class Meeting Days:	TR
E-Mail:	nhallquisthulse@csustan.edu	Class Meeting Hours:	8:00-9:15
Website:	Http://www.csustan.edu/hallquist	Class Location:	N101
Corequisite:	ZOOL 2235 Laboratory		

COURSE INFORMATION

University Course Catalog Description

Principles of functional physiology of organ systems with special reference to human physiology. (Lecture, 3 hours; laboratory, 3 hours)

Course Prerequisites/Requirements

Prerequisites: ZOOL 2250 with a C- or better, CHEM 1000 or CHEM 2100 or equivalent. Students must also be enrolled in ZOOL 2235 lab.

Required Texts and Materials

Anatomy and Physiology is an open source book available to view online or download as a PDF here:

<https://openstax.org/details/books/anatomy-and-physiology>

You may also pick up a copy in the bookstore or order a hard copy online.

Publisher: OpenStax College; 1st edition (January 1, 2013)

ISBN-10: 1938168135

ISBN-13: 978-1938168130

iClicker class response system

ISBN: 9781464120152

Supplementary/Recommended Texts and Materials

Anatomy and Physiology student supplementary materials

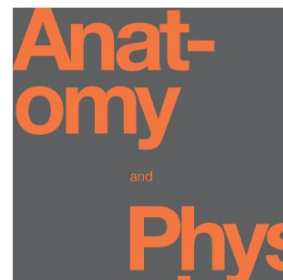
<https://openstax.org/details/books/anatomy-and-physiology#student-resources-section>

Pocket Companion to Guyton and Hall Textbook of Medical Physiology, 13e (Guyton Physiology) 13th Edition

Publisher: Saunders; 13 edition (June 4, 2015)

ISBN-10: 145577006X

ISBN-13: 978-1455770069



Course Learning Outcomes -

1. Describe how the body works, from the molecular level to organ systems and to the whole body
2. Explain the importance of physiology in modern medicine.
3. Examine the role of the scientific method in the study of physiology as it relates to evaluating evidences and drawing logical conclusions.
4. Examine the tissue level of organization and interpret the role of tissues in human systems. Compare and contrast the location, organization and function of the four basic classifications of human tissues.
5. Define homeostasis and explain how this concept is used in physiology and medicine.
6. Describe the nature of negative and positive feedback loops and explain how these mechanisms act to maintain homeostasis.
7. Distinguish between intrinsic and extrinsic regulation and the roles of nervous and endocrine systems.
8. Examine and describe the major features and functions of the cardiovascular, respiratory, muscular, digestive, immune, reproductive, and renal systems and their contributions to homeostasis.
9. Describe the relationship between homeostatic imbalance and diseases in each of the organ systems.

COURSE ASSIGNMENTS AND GRADING

The lecture grade will be based on in class iClicker responses and three exams. The laboratory will be graded separately as outlined by your laboratory instructor and the points added to your final grade.

Class attendance is highly recommended; missing classes may result in poor performance in the course. You are responsible for any information or assignments you missed in your absence. You will also miss on iclicker points for questions given during lecture; there is no making up missed iclicker points. I highly recommend reading the assigned chapters before coming to class.

iClicker questions: Each lecture, you will be asked to respond to a number of questions using the iClicker student response system. The questions will come from lecture material that was covered previously, so it is in your best interest to keep up with the material. You will receive one point for answering the questions asked each day and an additional point for each correct answer. Your final iclicker grade will be based on the percentage of points you have earned out of the total possible. You will then be awarded points out of a total of 50 corresponding to your percentage points earned.

Exams: There will be three exams during the term, the first two worth 100 pts. each (50 pts. online and 50 pts. written in class) and the final worth 150 pts. (50 pts. online and 100 pts. Written in class). The final will be comprehensive. They may consist of any of the following: multiple choice, definitions, fill in the blank, matching, and short answer essay questions.

There will be no make-up exams: Failure to appear at exam time without 24 hours prior notice to instructor with an appropriate excuse, or an appropriately documented emergency, will result in zero points for that exam.

Course Grading

Your grades will be assigned as follows:

Assessment	Total Points
iClicker responses	50
Online Exams	150
Exams	200
Laboratory	150
Total	550

I will use plus/minus grading.

Grading Scale (%)	
94-100	A
90-93	A-
87-89	B+
84-86	B
80-83	B-
77-79	C+
74-76	C
70-73	C-
67-69	D+
64-66	D
60-63	D-
0 - 59	F

Course Policies: University catalog

Academic Dishonesty and Misconduct: Exams, reports, and presentations are indicators of individual performance. Copying off another student's exam, plagiarized reports, presentations or papers constitutes cheating. There is zero tolerance for cheating. Cheating in any capacity in this class will result in penalties ranging from a minimum of a zero on the assignment or exam to a maximum of expulsion from California State University, Stanislaus as indicated by the official University Policy regarding dishonesty and misconduct.

Grades of "Incomplete"

From The University Catalog –

An Incomplete signifies (1) that a portion of required coursework has not been completed and evaluated in the prescribed time period due to unforeseen but fully justified reasons beyond the student's control, and (2) that there is still a possibility of earning credit. It is the responsibility of the student to bring pertinent information to the attention of the instructor and to determine from the instructor the remaining course requirements which must be satisfied to remove the Incomplete. The conditions for removal of the Incomplete shall be put in writing by the instructor and given to the student, with a copy placed on file with the department chair. A final grade will be assigned when the work agreed upon has been completed and evaluated.

Any Incomplete must be made up within the time limit set by the instructor; in any case, no more than one calendar year following the end of the term in which the Incomplete was assigned. An Incomplete should never be used to (1) give a failing student an opportunity to redo unsatisfactory work or complete additional work; or (2) give a student more time to complete his/her work when the reasons for the delay have been within his/her control. This limitation prevails whether or not the student maintains continuous enrollment. Failure to complete the assigned work will result in an incomplete reverting to a grade of NC for grading options 1 and 2, and to a grade of IC for grading option 3. (See the Academic Standards section of this catalog and the Schedule of Classes Informational Guide for grading options.)

In cases of prolonged illness or any emergency which necessitates an extension of time to complete the course, the student may petition through the academic department where the course was offered. Students may not be permitted to graduate until all Incompletes are removed or evaluated as "IC" grades. Students are not to reregister in courses in which they have an Incomplete.

http://catalog.csustan.edu/content.php?catoid=12&navoid=541&returnto=search#indi_stud_cour

Email

Please direct questions regarding course materials to me at nhallquisthulse@csustan.edu. Please put ZOOL 2235 in the subject line as I get many emails every day and I want to be sure to respond to yours quickly. For issues with BlackBoard, please contact the helpdesk, linked from the BlackBoard login page.

Netiquette

Please review and follow the netiquette provided at the following link:

<http://www.csustan.edu/blackboard/Netiquette.html>.

COURSE POLICIES: PLAGIARISM

University Academic Conduct Policy

There will be zero-tolerance for plagiarism/cheating. Plagiarism and/or cheating will result in a 0.0 for the class. For further information, please see the CSU Stanislaus catalog for Student Code of Conduct

http://catalog.csustan.edu/content.php?catoid=3&navoid=115#stud_cond

RESOURCES

Disability Resource Services

CSU Stanislaus respects all forms of diversity. By university commitment and by law, students with disabilities are entitled to participate in academic activities and to be tested in a manner that accurately assesses their knowledge and skills. They also may qualify for reasonable accommodations that ensure equal access to lectures, labs, films, and other class-related activities. Please see the instructor if you need accommodations for a registered disability. Students can contact the Disability Resource Services office for additional information. The Disability Resource Services website can be accessed at <http://www.csustan.edu/DRS/>

Phone: (209) 667-3159

Recording Policy:

Audio or video recording of classes (tape and digital format) or use of cameras/phones to photograph or record lectures is not permitted. An exception is made for students registered with Disability Resource Services, who are approved for this accommodation. In such exceptions, DRS students will be asked to sign a "Recording

Agreement” which disallows them from sharing recordings with other individuals unless approved by the DRS program.

COURSE SCHEDULE

Tentative Lecture Schedule

Materials will be active online with due dates, please check Blackboard periodically to make sure you don't miss any assignments.

DATE	TOPIC	Chapter
Jan 25	Introduction: The Meaning of Physiology The Human Body-Levels of Organization Homeostasis	1
Jan 30, Feb 1	Chemical Compositions of the Body Enzymes and Energy	2
Feb 6	The Plasma Membrane: Functions	3
Feb 8	Energetics	
Feb 13	Fundamentals of the Nervous System	12
Feb 15	Central Nervous System	13
Feb 20, 22	The Autonomic Nervous System	15
Feb 27	EXAM 1	
Mar 1	Endocrine System	17
Mar 6	Muscle	10
Mar 8, 13	Cardiovascular System - Blood	18
Mar 15, 20	The Heart	19
Mar 22	Physiology of Circulation	20
Mar 27, 29	Immune System	21
Apr 10	Exam 2	
Apr 12	The Respiratory System	22
Apr 17, 19	The Digestive System	23
Apr 24, 26	Nutrition, Metabolism, and Body Temperature	14
May 1, 3	The Urinary System	25
May 8	Fluid and Electrolyte balance	26
May 10, 15	Reproductive System	27
May 17	Final Exam 8:30-10:30	