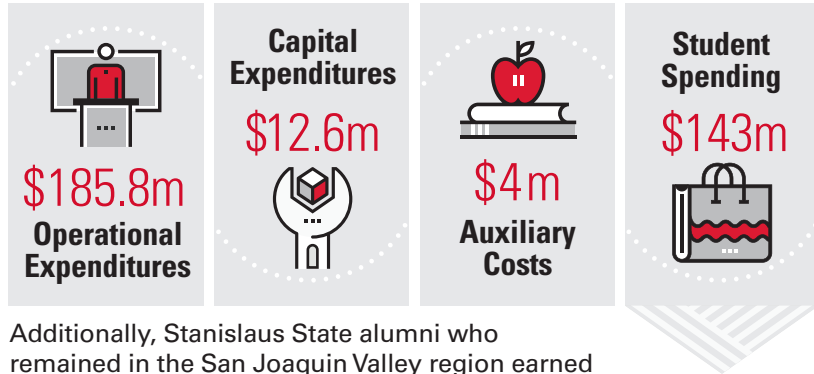


Stanislaus State



INPUTS:

In the 2018-19 academic year, the Stanislaus State campus spent a total of **\$345.3 million**, made up of

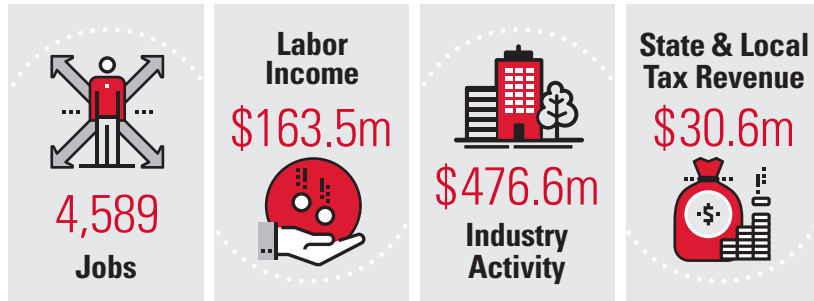


Additionally, Stanislaus State alumni who remained in the San Joaquin Valley region earned an additional **\$1.2 billion** in earnings attributable to their CSU degree, and alumni who remained in the state earned an additional **\$1.45 billion** in 2019.

\$345.3m

REGIONAL OUTPUT:

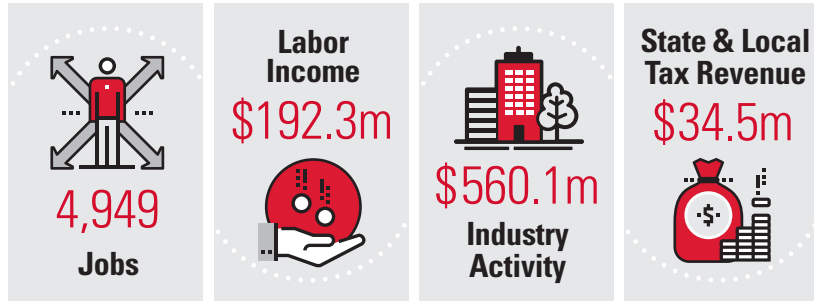
Within the San Joaquin Valley region, Stanislaus State-related activity supported



In addition, Stanislaus State alumni in the region supported an additional **7,855 jobs**, **\$487.2 million** in labor income, **\$1.5 billion** in industry activity, and **\$97.7 million** in state and local tax revenue.

STATE-LEVEL OUTPUT:

Within California, Stanislaus State direct spending supported



Stanislaus State alumni who are still in California supported an additional **9,706 jobs**, **\$601.9 million** in labor income, **\$1.8 billion** in industry activity, and **\$120.8 million** in state and local tax revenue.



Stanislaus State



ONE UNIVERSITY CIRCLE
TURLOCK, CALIFORNIA 95382
(209) 667-3122
www.csustan.edu

RETURN ON INVESTMENT:

In 2018-19, the state's investment in Stanislaus State (operating and average capital appropriations) totaled **\$75.6 million**.

For every dollar invested
by the state in the campus

\$7.41

in statewide
Industry Activity
is generated



When the impact of the enhanced
alumni earnings is included

\$31.26

in statewide
Industry Activity
is generated



RESEARCH:



HEALTH Paving the Way to Work Through Wellness

WellnessWORKs! is a local partnership between Stanislaus State, San Joaquin County Mental Health Services, and the county's Human Services Agency.

Since 2000, the university has provided one-week and three-week holistic courses with the goal of moving participants from welfare to wellness to work. The partnership has served more than 10,000 welfare recipients to foster positive self-esteem, improve self-care, and enhance personal empowerment and well-being.



AGRICULTURE Monitoring the Spread of Invasive Aquatic Snails

Graduate student Christina Robinson is studying the distribution and population dynamics of the mud snail, a non-native species that has invaded streams

that support threatened and endangered species. By sampling streams in the vicinity, Robinson is comparing the current aquatic community composition to historical data to determine how far the snail has spread and its effects on other aquatic animals, as well as the snail population's susceptibility to drought and floods.



BIOMEDICAL Boosting Agriculture Production Through Microbiology

Research conducted by a team of Stanislaus State students could help cut agriculture costs and speed up production of a vital ingredient in livestock feed.

"Nothing reinforces the concepts learned in a classroom like the actual real-life experiences one may obtain while working in a laboratory. Working on a project such as this one, and working on a research team, is an invaluable experience that any student who is interested in science should have."

— UNDERGRADUATE STUDENT CARLA ANTYPAS