



Brio Plug-in Installation

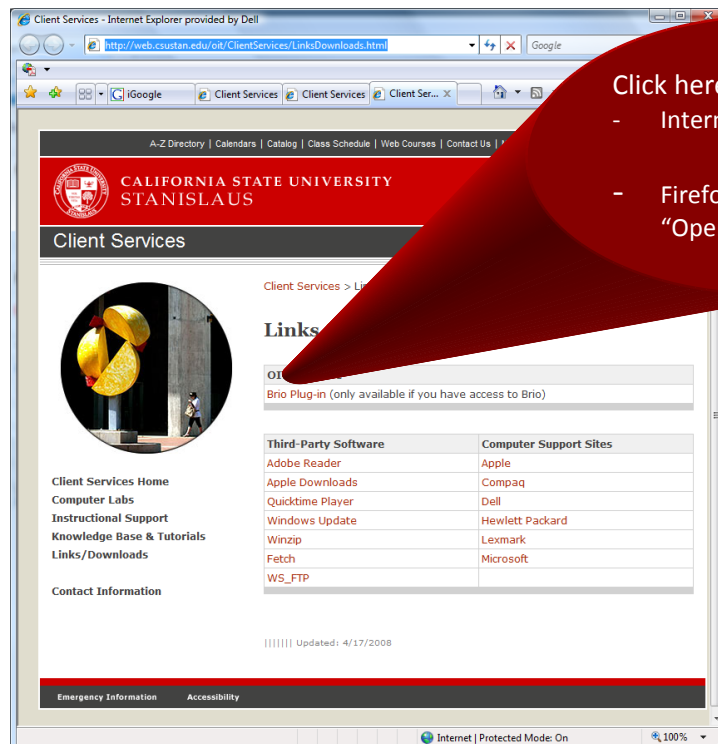
Office of Information Technology – Help Desk

www.csustan.edu/oit
helpdesk@csustan.edu
(209) 667-3687

To access Hyperion OnDemand (Brio) you must install the appropriate plug-in on your computer. This is only required the first time you use Brio; it should not be necessary to re-install this plug-in after the first installation. However, please be advised that this plug-in is user dependant, meaning that each unique user who uses the computer will have to install this plug-in for his or her account.

Note: During the installation process, you may be prompted by Windows to allow the installation program to run, select “YES” or “OK” to all Windows prompts during the installation. Additionally, please be mindful of any pop-ups that may be blocked by your web-browser during installation.

1. [Click here](#) or choose “Brio plug-in Install – Click here” from the Brio entry page (<https://oitweb3.csustan.edu/>).
2. From the OIT Links and Downloads page, select “Brio Plug-in”.
 - a. If you are using Internet Explorer, choose “Run” to start the installation program.
 - b. If you are using FireFox, choose “Save File” and then “Open” the BrioInstall.exe program to start the installation program.





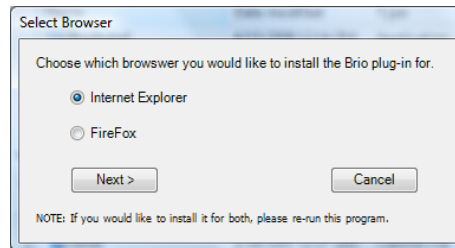
Brio Plug-in Installation

Office of Information Technology – Help Desk

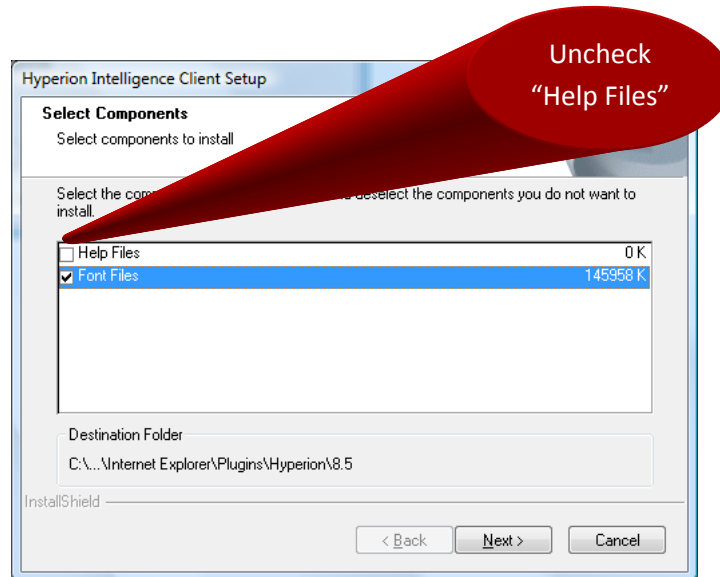
www.csustan.edu/oit
helpdesk@csustan.edu
(209) 667-3687

3. A black window will appear and after about 30 seconds you will be prompted to select your preferred browser as shown below.

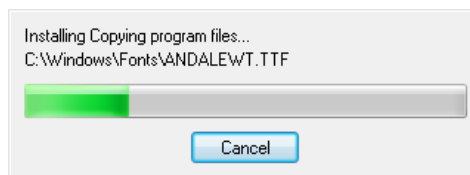
Note: If you use both browsers to access Brio you will need to re-run this installation and install the plug-in for the alternate web browser.



4. The Hyperion Intelligence Client Setup program will begin. Uncheck the “Help Files” and select “Next”.



5. The plug-in will then start installing.



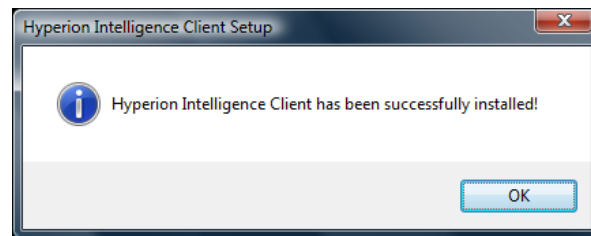


Brio Plug-in Installation

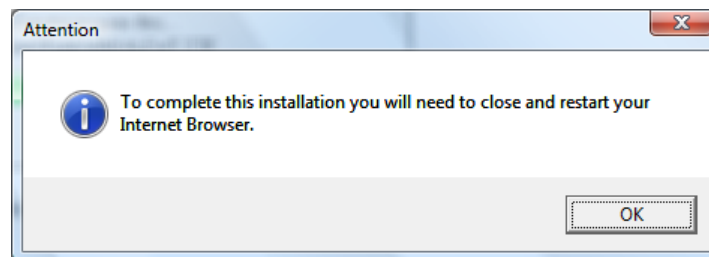
Office of Information Technology – Help Desk

www.csustan.edu/oit
helpdesk@csustan.edu
(209) 667-3687

- The installation may take several minutes to finish depending on the speed of your connection and the speed of your computer. When the installation is complete, select “OK”



- To finish configuring your Brio plug-in you will need to close and re-open your web browser.



- You now have successfully installed and configured the Brio plug-in. Remember, if you use both Internet Explorer and FireFox, you will need to re-run the installation program and select the alternate browser.
- To log on to Brio, select the Logon button on the Brio web site (<https://oitweb3.csustan.edu/>)



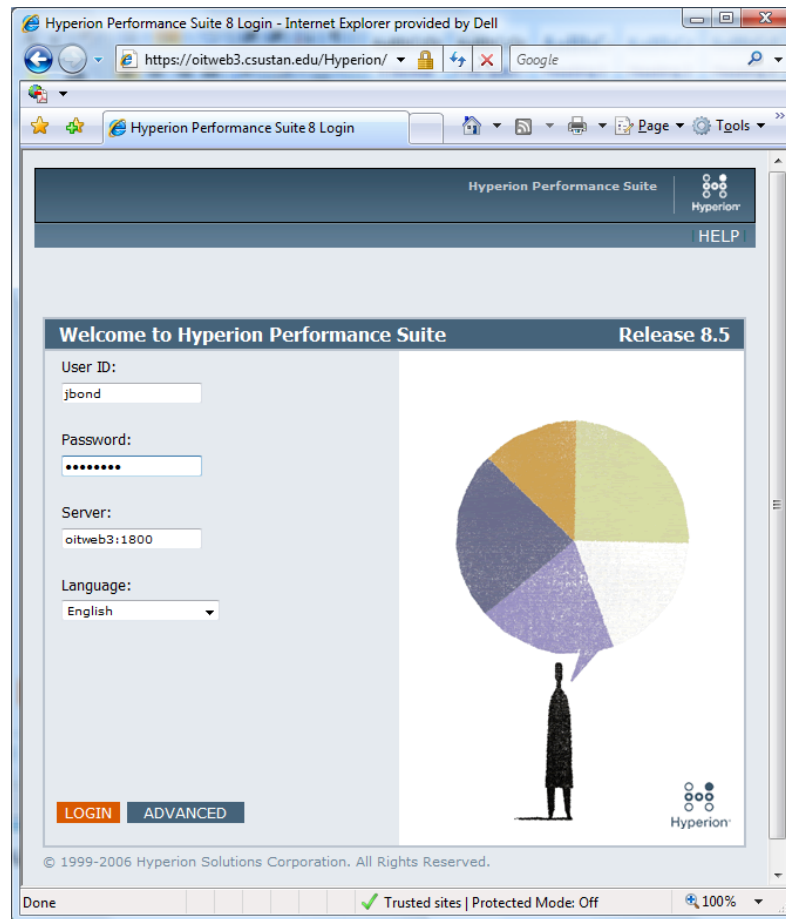


Brio Plug-in Installation

Office of Information Technology – Help Desk

www.csustan.edu/oit
helpdesk@csustan.edu
(209) 667-3687

10. The system has now been integrated into the campus-wide directory service system. Therefore you will use the same User ID and Password that you use to log onto your computer. (This is the first portion of your CSUStan e-mail address, before “@csustan.edu”: Ex. “jbond@csustan.edu” would use “jbond” as the username.



11. If you have any problems getting logged onto Brio please contact the Information Technology Help Desk at 667-3687 or helpdesk@csustan.edu. For help with specific reports or to request additional reports, please see the contact information on the left of the Brio entry page (<https://oitweb3.csustan.edu/>)