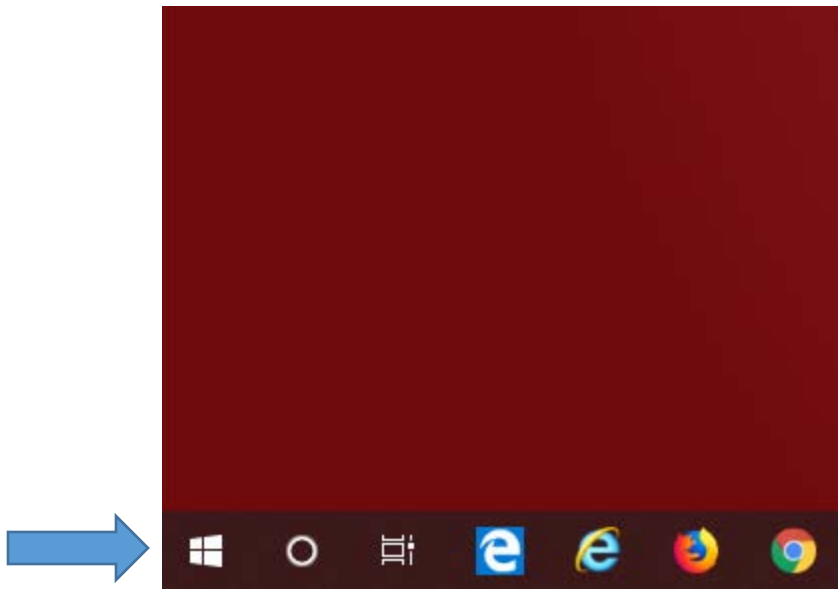


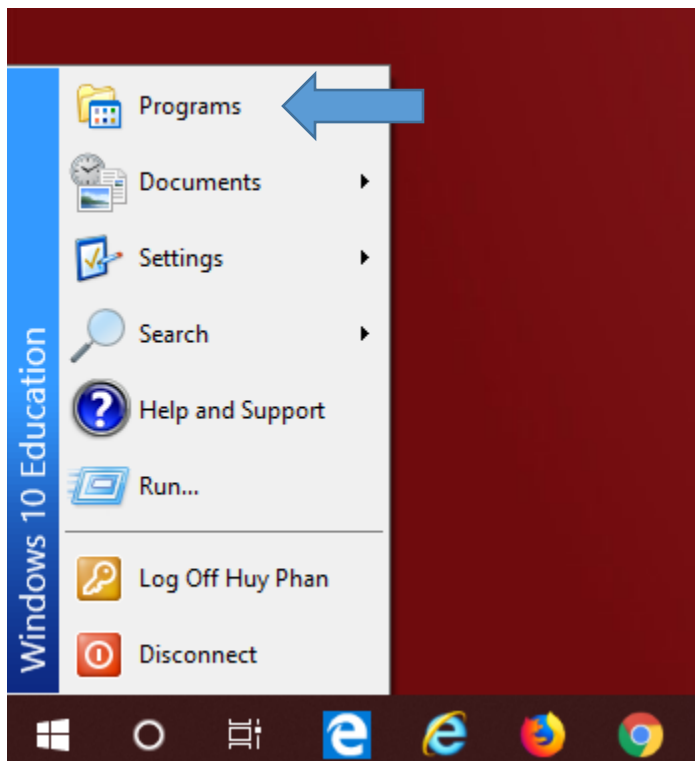


Instructions for Using Adobe Creative Cloud Applications in Computer Labs

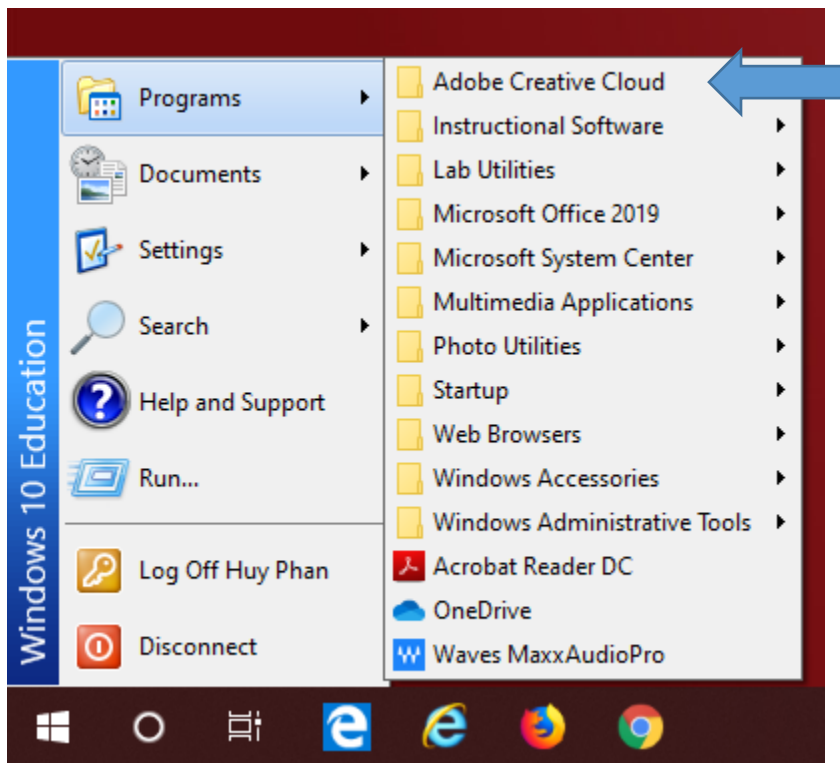
- 1) From the Windows desktop, click on the “Start” icon in the lower left-hand corner.



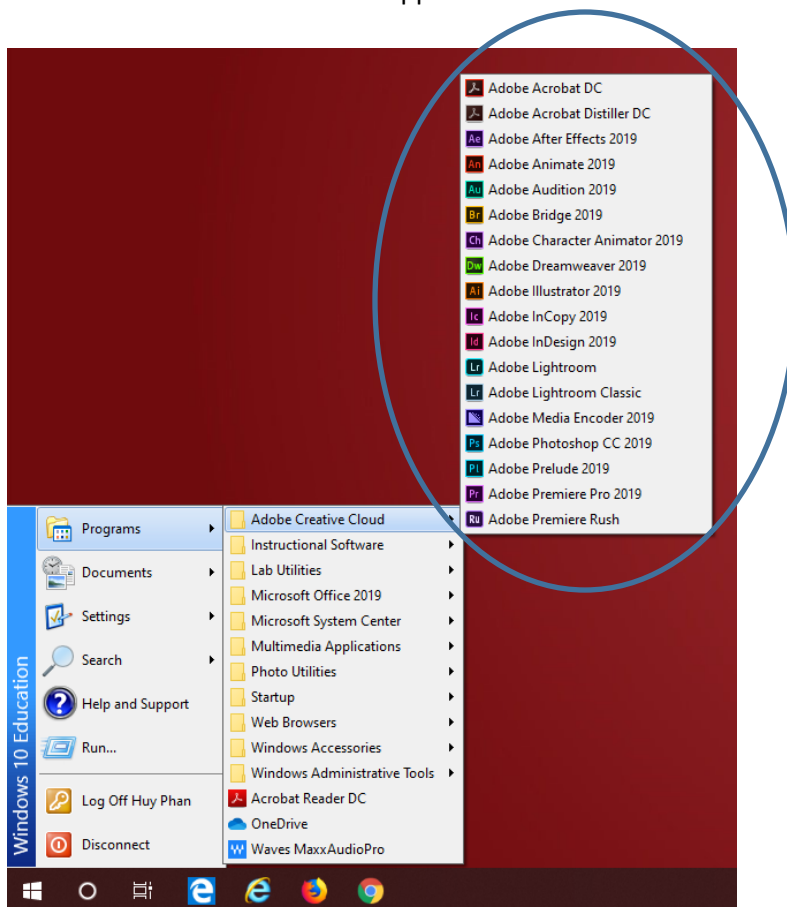
- 2) Click on “Programs”.



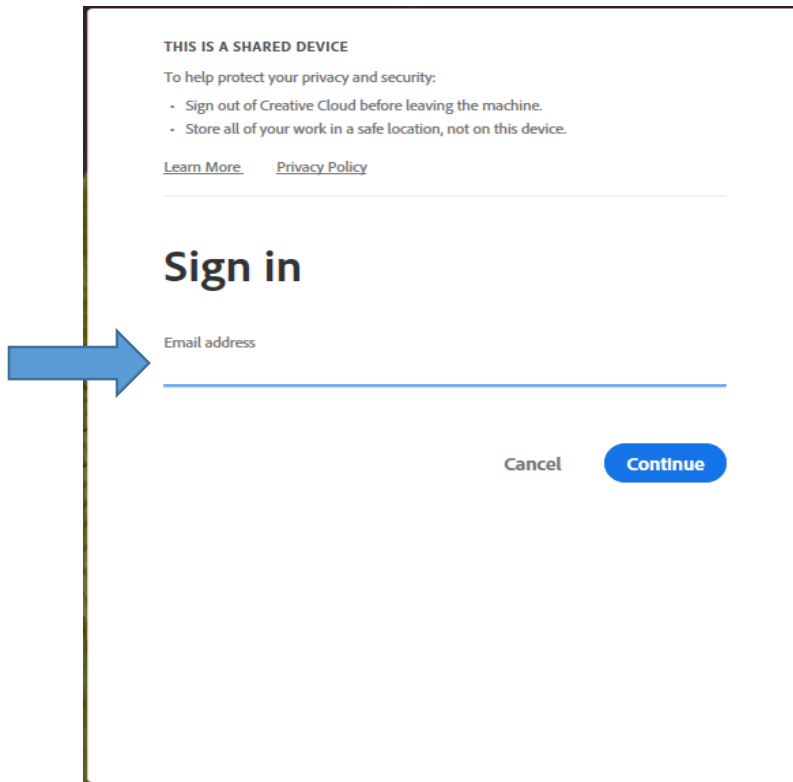
3) Click on "Adobe Creative Cloud".



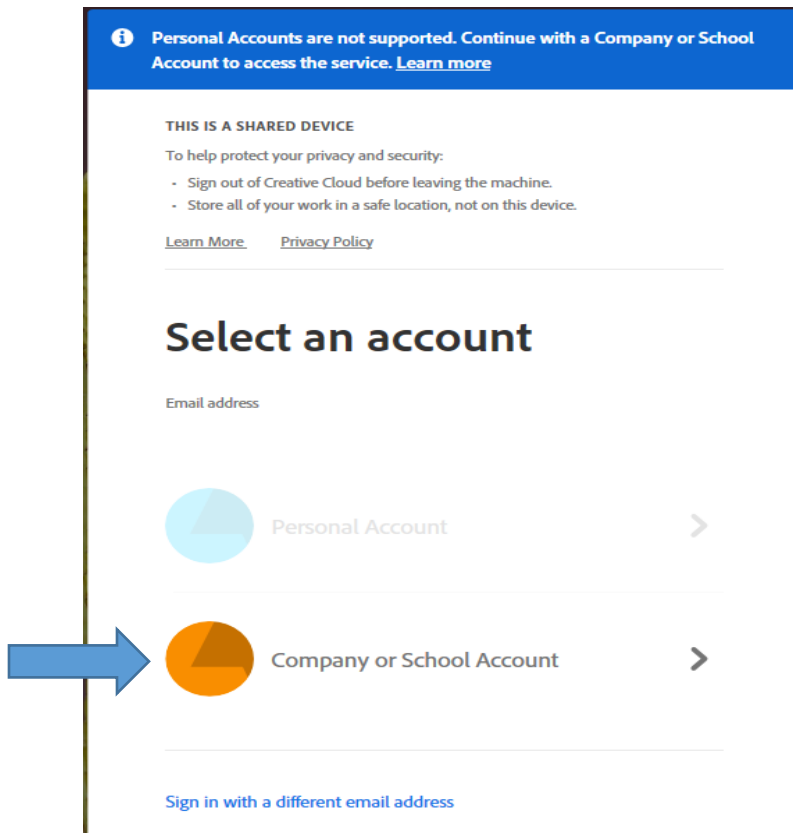
4) Select an Adobe Creative Cloud application.



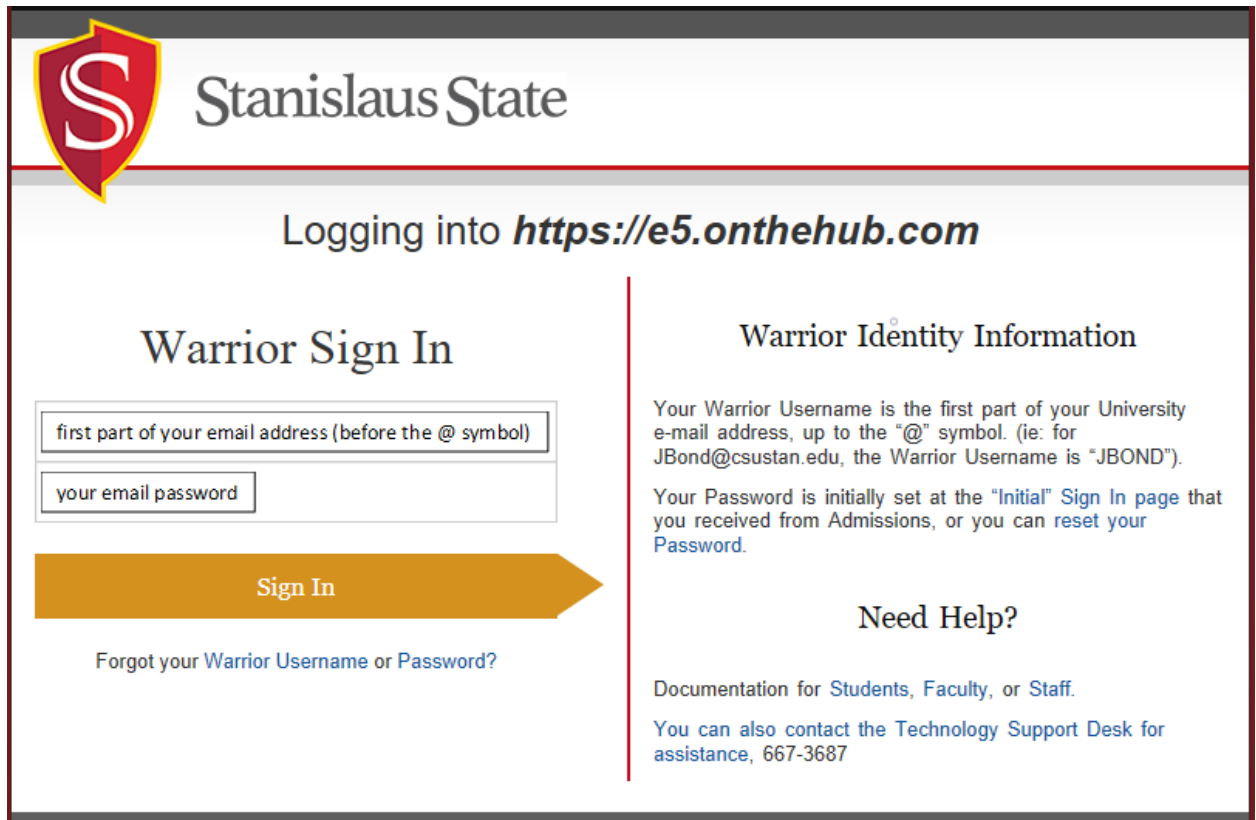
5) Enter your Stan State email address on the following screen:



6) Select the “Company or School Account” option on the next screen:



- 7) At the Stan State Warrior Sign In screen, enter the first part of your email address (before the @ symbol) and your email password, then click on "Sign In".



The image shows the Stanislaus State Warrior Sign In screen. At the top left is the Stanislaus State logo, a red shield with a white 'S'. To its right is the text "Stanislaus State". Below this is a red horizontal line. Underneath the line, the text "Logging into <https://e5.onthehub.com>" is displayed. The screen is divided into two main sections by a vertical red line. The left section is titled "Warrior Sign In" and contains two input fields: the first is labeled "first part of your email address (before the @ symbol)" and the second is labeled "your email password". Below these fields is a large orange arrow pointing right with the text "Sign In" inside it. Underneath the arrow is a link: "Forgot your [Warrior Username](#) or [Password](#)". The right section is titled "Warrior Identity Information" and contains two paragraphs of text. The first paragraph explains that the Warrior Username is the first part of the University e-mail address, up to the "@" symbol, and provides an example: "JBond@csustan.edu, the Warrior Username is 'JBOND'". The second paragraph explains that the Password is initially set at the "Initial" Sign In page and provides a link to "reset your Password". Below this information is a section titled "Need Help?" which contains a link to "Documentation for [Students](#), [Faculty](#), or [Staff](#)." and another link: "You can also contact the [Technology Support Desk](#) for assistance, 667-3687".

- 8) The Adobe Creative Cloud application that you selected (from step 4) will now open.