

Accessing Student Network Folders from Off-Campus

**In order to use this service, Java needs to be installed on your personal computer. If Java is not installed, please visit <http://www.java.com/en/>
After Java is installed, you may proceed to the following:

- 1) From a web browser, enter the following URL: <https://files.csustan.edu>
- 2) Enter your campus username/password and click on "Login".

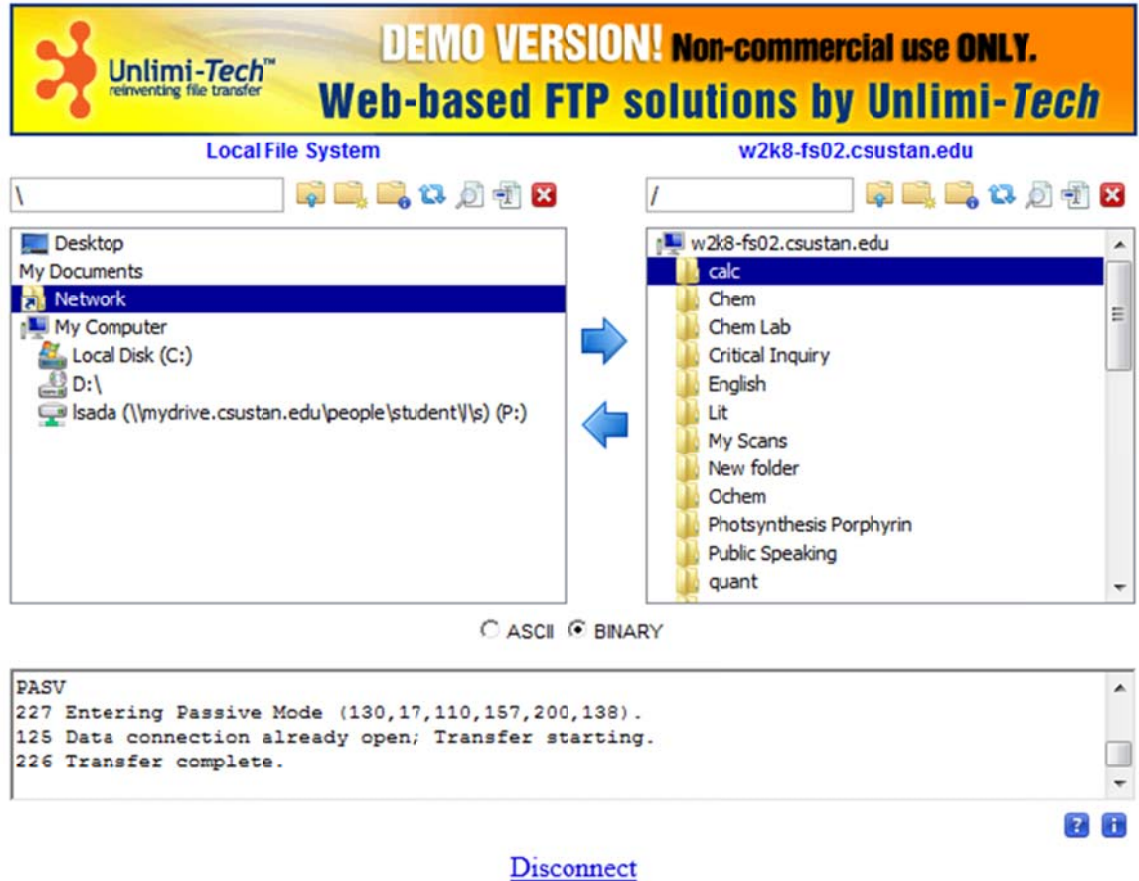


UnlimitedFTP Login	
Please enter your Campus ID and password	
Username:	<input type="text" value="Enter username here"/>
Password:	<input type="password" value="Enter password here"/>
<input type="button" value="Login"/>	

Click on the "Login" button

[Back To Index](#)

3) You will then see the following screen, showing contents of your personal computer on the left-hand side and contents of your network folder on the right-hand side.



- 4) To transfer a file to your personal computer, highlight the file on the right-hand side. Then, double-click on "Desktop" on the left-hand side. Finally, click on the left-facing blue arrow.

Unlimi-Tech™
re inventing file transfer

DEMO VERSION! Non-commercial use ONLY.
Web-based FTP solutions by Unlimi-Tech

Local File System w2k8-fs02.csustan.edu

1) Highlight file to transfer

2) Double-click on "Desktop"

3) Click on the left-facing blue arrow

ASCI BINARY

```
PASV
227 Entering Passive Mode (130,17,110,157,200,138).
125 Data connection already open; Transfer starting.
226 Transfer complete.
```

[Disconnect](#)

5) The file is now saved to your computer desktop.

