

# Inaugural BRASS DAY

Saturday, November 15, 2014

## Who is Brass Day designed for?

- All high school and college students as well as all freelance brass players
- All music educators wanting to learn more about brass

## Goals

- Exposure to challenging ensemble repertoire and other excellent musicians
- Focus on the fundamental skills required for good ensemble playing
- Offer clinics and masterclasses designed to develop student's abilities on their chosen instruments

## What to bring

- Instrument
- All-State audition music
- Paper and pencil for notes
- A great attitude
- Bring concert attire  
Men: Dress slacks, collared shirt  
Women: Dress slacks or skirt and blouse, or a long dress

## FEES

<b>Early Bird Registration:</b>	\$20 (August 30 - September 30, 2014)
<b>Registration:</b>	\$25 (October 1 - November 6, 2014)
Registration Fee includes: Admission to the event, CSU Stanislaus Brass Day Wristband and 1 Complimentary Ticket to the Concert*	
<b>Evening Concert</b>	\$12 General Admission \$8 Students, Faculty/Staff, Seniors

**Free Parking in Lot 3.**

\* Complimentary ticket available at the box office prior to the concert.

## Schedule

12:15 p.m.	Registration
1:00 p.m.	Welcome and Opening Session
1:40 - 2:40 p.m.	All-State Music Clinics, Warm-Ups and Techniques (Trumpet, Horn, Trombone, Tuba and Euphonium)
2:40 p.m.	Break
2:50 - 4:50 p.m.	Masterclasses (High Brass and Low Brass)
4:50 p.m.	Break
5:00 - 6:00 p.m.	Mass Brass Rehearsal
6:00 p.m.	Dinner Break and Change into Concert Attire
7:30 p.m.	Concert

\*Schedule subject to change without notice.

## Performances

Mass Brass Ensemble featuring CSU Stanislaus Brass Students

CSU Stanislaus Brass Faculty including Joe Mazzaferro, Jamie Dubberly and Elisha Wilson

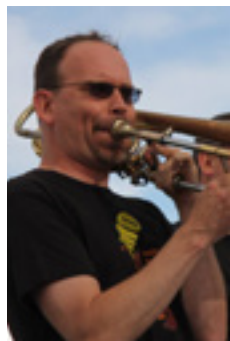
Guest Artists including Nathan Johnson, Dr. Tom Heibert and Ryan Black

## FEATURED ARTISTS



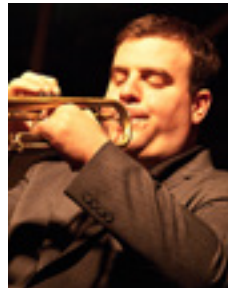
**Thomas Hiebert** is Professor of Music at California State University, Fresno, where he has taught since 1987. He has performed widely as a recitalist on both valved and natural horn. Dr. Hiebert has also performed as a member of many orchestras, including the Boston Lyric Opera, Wisconsin Chamber Orchestra, Nebraska Chamber Orchestra, Lincoln Symphony, and the Junge Deutsche Philharmonie. He has been principal horn of Fresno's Orpheus Chamber Ensemble since 1987 and has performed as acting principal horn of the Fresno Philharmonic. His solo performing experience is wide ranging—from a concerto performance of Richard Strauss' Horn Concerto No.1 with the Tulare County Symphony to a concert of solo works performed on Baroque natural horn by G.P. Telemann and others at the 25th Musical Instrument Symposium in Michaelstein, Germany.

**Elisha Wilson** is a versatile musician with an eclectic background of 29 years in the performing art, including extensive study in music, dance and theater. Early in her career, Mrs. Wilson was fortunate to perform as a horn player and dancer in the Tony Award winning Broadway show, Blast!, between 2001 and 2003 while traveling all over the United States on a national tour. Elisha is currently the Conductor and Musical Director of the Visalia Opera Company. She also teaches on the faculties of California State University, Stanislaus, College of Sequoias in Visalia, CA, and Fresno City College in Fresno, CA. She has been featured as a soloist with various groups, including Franz Strauss' Horn Concerto in C Minor and as a guest artist of the Fresno Pacific University Pacific Artists Series in 2013. Her current orchestral accomplishments include Principal Horn with the Tulare County Symphony and Third Horn with the Merced Symphony.



**Jamie Dubberly** is a trombonist, composer, educator, and bandleader originally from coastal Georgia. He has been in northern California since 2003, when he moved from New York City to Modesto, CA. Since then, Jamie has been quite active in the Bay Area and Central Valley latin, jazz and orchestral music scenes, and is currently a member of the following prominent ensembles: Avance, Pacific Mambo Orchestra, Realistic Orchestra, Townsend Opera Orchestra, Brian Andres' Afro Cuban Jazz Cartel, and Orquesta Dharma (leader). He also works frequently with noted Bay Area bands, including Mazacote (Louie Romero) and the Tommy Igoe Big Band. Jamie is currently on the faculty of California State University Stanislaus and University of the Pacific. As an orchestral bass trombonist, he has performed with: Hartford Symphony Orchestra and Brooklyn Philharmonic. Jamie has performed extensively in musical theater touring orchestras across Europe, Asia, and the U.S. He has performed with jazz and latin artists such as Bobby Shew, Ernie Watts, Steve Davis (trombone), Arturo O'Farrill, Doug Beavers, Alan Ferber, Pete Escovedo, Paul Contos, and Mic Gillette. Recently, Jamie's performance on the Pacific Mambo Orchestra's release of "Pacific Mambo Orchestra" earned a Grammy award in 2014, in the category "best tropical latin album."

Trumpeter, Educator, Composer, and Arranger, **Joe Mazzaferro** has been active in the Sacramento, Stockton, and Central Valley jazz scenes since 2002. He holds a Bachelor's of Music in Music Education from the University of the Pacific and a Masters of Music in Jazz and Studio Music from the University of Tennessee, Knoxville. As a student at UT, he served as a Graduate Teaching Assistant for the jazz program and arranged music for the University Big Band. In addition, he studied improvisation and composition with former Jazz Messenger pianist Donald Brown, Mark Boling, and Vance Thompson. Joe became Coordinator of Jazz Studies at California State University Stanislaus in 2012 where he teaches jazz courses and directs the CSU Stanislaus Jazz Ensemble. Throughout his career, Joe has had the opportunity to perform with many jazz greats, including: Wycliffe Gordon, Jeff Clayton, Ingrid Jensen, Lewis Nash, Donald Brown, Montez Coleman, Jim Snidero, Patrick Langham, Simon Rowe, Joe Gilman, Capital Jazz Project, and the Knoxville Jazz Orchestra. Currently, Joe serves as the Musical Director and Co-Founder of the Sacramento Jazz Orchestra and teaches regularly at Cazadero Music Camp.



**Nathan Johnson** is a trumpeter from Fresno, California currently living in Los Angeles. Equally at home with jazz and classical music styles, he graduated from the Eastman School of Music in Rochester, New York in 2008. While at Eastman, Nathan performed and recorded with the famed Canadian Brass as a member of the Eastman Wind Ensemble on the album called, "Manhattan Music". After receiving his degree from Eastman, Nathan moved to Eugene, Oregon to perform with the Oregon Bach Festival, Eugene Symphony Orchestra, Eugene Concert Choir and the Emerald City Jazz Kings. Nathan currently lives and works in the Los Angeles area, where he has performed with ensembles such as the Burbank Philharmonic Orchestra, Downey Symphony Orchestra and the Santa Clarita Master Chorale Orchestra. Most recently, Nathan returned from Australia as a member of the Glenn Miller Orchestra, touring around country throughout the summer of 2014.

As a multi-low brass instrumentalist, **Ryan Black** appears in many scenes, from the classical world to salsa, often on tenor trombone, bass trombone, euphonium, or tuba. Ryan has performed with the San Francisco Opera and Ballet orchestras as well as Orquesta Sinfonica UANL in Monterrey, Mexico on bass and tenor trombone. He is often seen playing with touring Broadway musicals in San Francisco and Sacramento on bass trombone and tuba. He is currently working with Avance, Tommy Igoe Big Band, Marcus Shelby Orchestra, and the Fil Lorenz Orchestra. He has performed in horn sections for Natalie Cole, Sheila E., the O'Jays, and Wayne Newton, while also performing in the orchestra backing Frank Sinatra Jr. and Idina Menzel. Ryan can be heard on a variety of recordings on each low brass instrument, from jazz to video game music. He can also be heard on the Grammy winning album of Pacific Mambo Orchestra's self titled cd. With a studio of trombone, euphonium and tuba students at Bridgepoint Music in Menlo Park, Ryan keeps a studio that ranges in age from 7-70.





# Inaugural BRASS DAY

Saturday, November 15, 2014

## APPLICATION FORM

Participants Name

Address

City

State

Zip

Phone

Fax

Email

I acknowledge that a release of liability is required for each participant and must be submitted with the registration form.

Go to <http://www.csustan.edu/music/forms-publications> for the liability form. Please email [risk@csustan.edu](mailto:risk@csustan.edu) with any questions.

I am interested in performing in the Masterclass

High Brass

Low Brass

Once registered, you will be contacted by the Director, Elisha Wilson, via email

### Application Fees

\$25 Early Bird Registration (Aug. 30 - Sep.30)

\$30 Registration (Oct. 1 - Nov. 6)

### Evening Concert:

\$12 General Admission

\$8 Student, Faculty/Staff, Seniors

Participant Signature

Date

Parent/Guardian Signature (for participants under 18)

Date

Make checks payable to:  
CSUS Department of Music

SEND REGISTRATION FORM  
AND PAYMENT TO:

CSU Stanislaus  
Attn: Cashiers Office  
CSU Stanislaus Brass Day  
One University Circle  
Turlock, CA 95382

QUESTIONS?  
Elisha Wilson, director  
phone: (209) 667-3421  
email: [ewilson4@csustan.edu](mailto:ewilson4@csustan.edu)  
[www.csustan.edu/music](http://www.csustan.edu/music)

FOR OFFICE USE ONLY

T849

CASHIER INITIALS \_\_\_\_\_

AMOUNT \_\_\_\_\_

(PLEASE ATTACH RECEIPT)

Deadline for early bird registration is Tuesday, September 30, 2014.  
Payment Must be Received by Thursday, November 6, 2014.

Mail the registration form, liability forms and check payment (made payable to CSUS Department of Music) to the address to the right. You will receive confirmation of your festival registration by email. Detailed information including performance times, maps, clinicians, and more will be mailed prior to the festival.