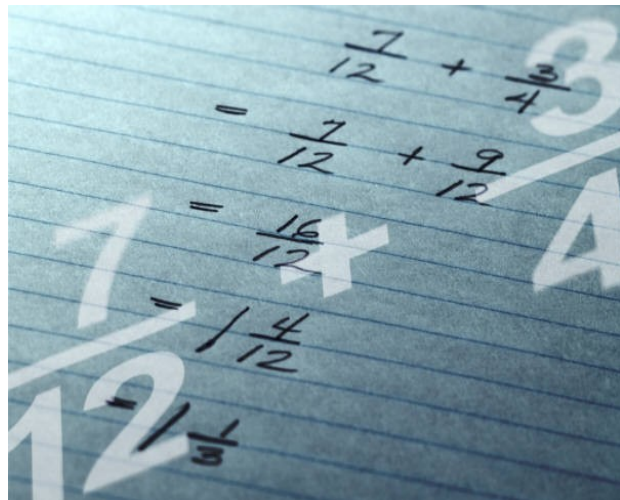


# Strengthening Mathematics Instruction (SMI) Trainings

CSU faculty, K-12 Math teachers, and state curriculum specialists have developed a math curriculum, Strengthening Mathematics Instruction (SMI), designed to present a variety of strategies for teaching students how to solve complex mathematical problems.

## Highlights of module contents:

- Presentation of a variety of strategies for teaching students how to solve complex problems
- Instruction on developing cognitively complex problems
- Looking at student misconceptions
- Teaching strategies to:
  - ◊ Promote mathematical and numeric flexibility
  - ◊ Incorporate alternative representations
  - ◊ Help students extend known procedures and generalize patterns
- Support to improve student performance on CSTs, the EAP, SATs and ACTs, AP exams, and other tests as well as classroom instruction



To set up an SMI Training,  
please contact:

Erin Cross  
ecross@stancoe.org  
(209) 238-1310