
Stanislaus State Alternative Transportation Committee

— May 22, 2023 —



WALKER
CONSULTANTS

TDM Plan & Parking Feasibility Study

Tasks and Activities

- Kick-off
- Engagement
- Mobility and Commuting Survey
- Parking Needs Assessment
- Transportation Demand Management (TDM) Analysis
- Pedestrian and Bicycle Plan
- Financial Analysis
- Final Study Document



WALKER
CONSULTANTS

TDM Plan & Parking Feasibility Study

Overview & Schedule

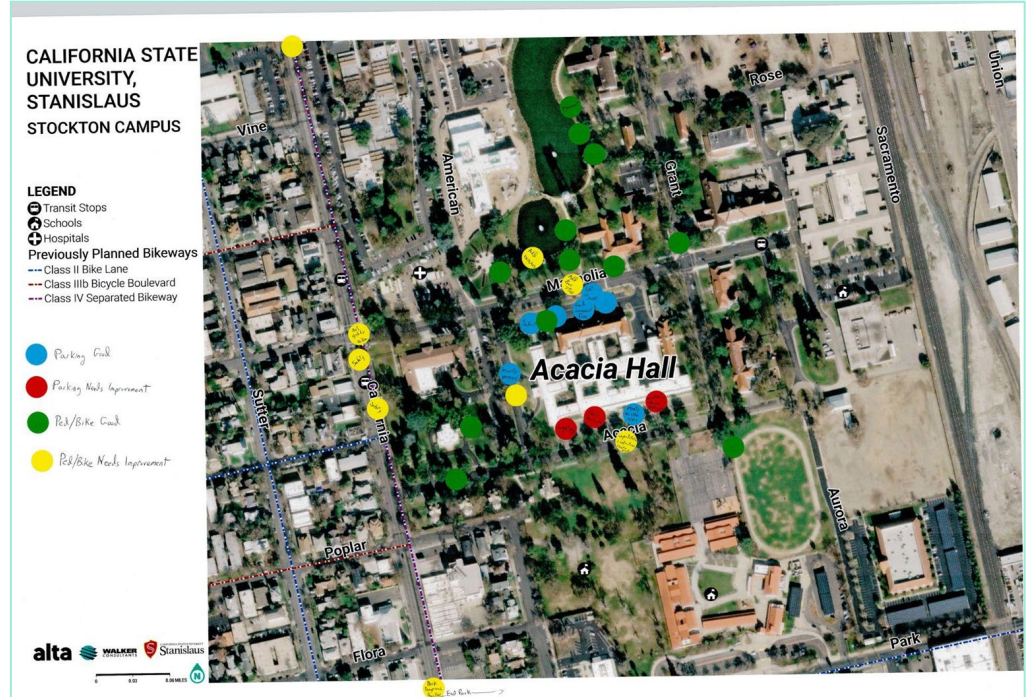
Kick-off and engagement	March 2023
Data collection	Spring 2023
Data analysis	Summer 2023
Survey and additional engagement	Fall 2023
Draft deliverable & ATC Meeting	December 2023
Final deliverable & ATC Meeting	February 2024

Recap the Site Visit - Turlock

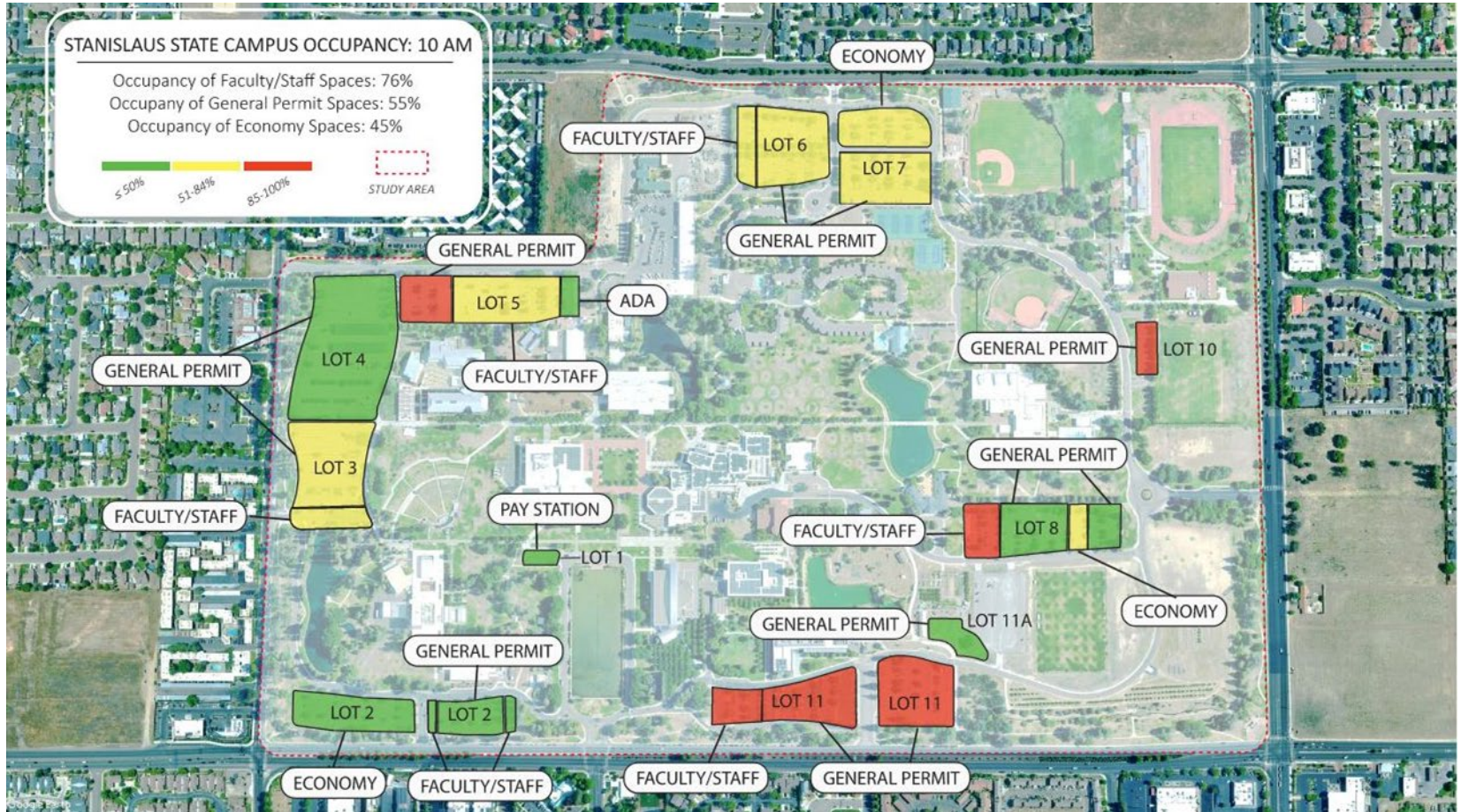
- Stakeholder meetings
- Warrior Wednesday
- Parking occupancy data collection



Recap the Site Visit - Stockton



Parking Inventory/Occupancy



one image of peak demand (that illustrates that parking demand isn't overwhelming at this point). An implication of the low occupancy rates is that it suggests that many people get to campus by means other than a car with a parking permit. How can this significant population be better served for convenience, safety, and choices?

Transit

- Transport between campuses
 - Shuttle to Amtrak
 - Direct Shuttle?
- Increase awareness of transit options
- Can commutes from Modesto and Merced be improved?



Bicycle & Pedestrian Plan Subtask

- Improve pedestrian crossings of edge roads surrounding the Turlock campus
- Construct protected bike lanes near both campuses
- Identify locations for additional bike parking
- Consider a shared bike system on Turlock campus



Survey

Comprehensive online survey of commuting, mobility, and parking preferences, attitudes, and behaviors.

- All Turlock/Stockton campus community members invited to respond
- Late September or early October
- Open for two weeks
- Will inform recommendations
- Peer and constituent encouragement is vital to response rates