

## BENEFITS OF MEMBERSHIP

- Student leadership opportunities to serve the chapter including Vice Presidents, Coordinator for Student Affairs and Assistant Coordinator for Student Affairs
- Alumni leadership opportunities to serve the chapter including the Coordinator for Alumni Affairs and Assistant Coordinator for Alumni Affairs
- Opportunity to apply for awards and grants totaling \$1 million each biennium
- Career assistance through the Career Center
- Membership verification letters for graduate school admissions packets and employment applications
- Exclusive discounts from Dell, Apple, Lenovo, AT&T, GEICO, LifeLock, Carbonite, Becker Professional Education, The Princeton Review, Enterprise Rent-A-Car and many more
- Mentor Match program that pairs students and young professionals with members accomplished in their various fields
- Podcasts on educational and career-related topics
- Online communities for professional and social networking
- Logo graphics for your CV or résumé
- Subscription to the Society's award-winning quarterly magazine, *Phi Kappa Phi Forum*
- Graduation stoles, cords and medallions



*New Phi Kappa Phi initiates are presented with a Society key and medallion, which represents the various branches of general education and the bond that unites members in a common love of learning. The medallion is to be worn at commencement, signifying your membership in the Society.*

**LEARN MORE** [phikappaphi.org/whyjoin](http://phikappaphi.org/whyjoin)



### CONTACT US

**THE HONOR SOCIETY OF PHI KAPPA PHI CHAPTER 282**

California State University, Stanislaus

One University Circle

Building MSR 368

Turlock, CA 95382

[WWW.CSUSTAN.EDU/PKP](http://WWW.CSUSTAN.EDU/PKP)

California State University | Stanislaus



THE HONOR  SOCIETY OF  
**PHI KAPPA PHI**

## MEMBERSHIP & ELIGIBILITY



### Standards for election in Phi Kappa Phi are extremely high.

Membership is by invitation only to the top 7.5 percent of second-term juniors and the top 10 percent of seniors and graduate students. Outstanding faculty, professional staff and alumni who have achieved scholarly distinction may also qualify. Because Phi Kappa Phi is highly selective, membership is a stamp of excellence that is recognized by graduate and professional school admissions committees and employers alike.

*Eligibility details to join the CSU Stanislaus Chapter:*

### JUNIORS

Must rank in upper 7.5 percent of major  
Minimum cumulative GPA of 3.75

### SENIORS

Must rank in upper 10 percent of major  
Minimum cumulative GPA of 3.75

### GRADUATE STUDENTS

Must rank in upper 10 percent of major  
Earned Classified Status  
Minimum cumulative GPA of 3.85  
Minimum cumulative undergraduate GPA of 3.6

## AWARDS & GRANTS

The Society awards **\$1 million each biennium** to outstanding students and members through its various programs:

### FELLOWSHIPS

Fifty-one Fellowships of \$5,000 each and six of \$15,000 each are awarded to members entering their first year of graduate or professional study.

### LOVE OF LEARNING

One hundred forty-seven awards, at \$500 each, are given annually to members for post-baccalaureate studies and career development.

### STUDY ABROAD

Fifty grants are awarded annually to undergraduates for study abroad experiences. Members and non-members are eligible to apply.

### LITERACY

Grants of up to \$2,500 are available to members and chapters seeking to champion literacy initiatives in their communities.

### SCHOLAR & ARTIST

A \$1,000 honorarium for both the Scholar and Artist award is given once a biennium to those individuals who demonstrate the ideals of the Society.

### DISTINGUISHED SERVICE

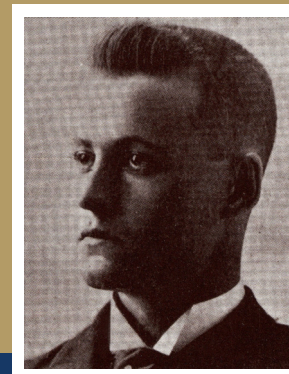
A \$1,000 honorarium is awarded once a biennium to an individual who has provided sustained, non-compensated volunteer service beyond the realm of academia.

### CHAPTER STUDENT SCHOLARSHIP

Two scholarships in the amount of \$500 each are awarded each year; one to an undergraduate, and one to a graduate active Phi Kappa Phi student who will be continuing their education at California State University, Stanislaus.

## History at CSU Stanislaus

As a multi-disciplinary honor society, students from every major, striving for academic excellence can also strive for initiation into Phi Kappa Phi. Our California State University, Stanislaus Chapter 282 was chartered in 1999 and has been active since its induction. In the year that our charter was granted, we were one of just three universities out of more than 60 that applied. It was a very lengthy and thorough screening process.



*"I was looking for something which would be an inspiration to all students to work for high rank, and I believed that uniting those who were interested would be helpful."*

Marcus L. Urann,  
in his proposal to establish The  
Honor Society of Phi Kappa Phi

## OUR MISSION

To recognize and promote academic excellence  
in all fields of higher education and to engage  
the community of scholars in service to others.

**Founded in 1897** at the University of Maine, Phi Kappa Phi is the nation's oldest and most selective all-discipline honor society. The Society inducts approximately 32,000 members annually from more than 300 colleges and universities in North America and the Philippines each year.