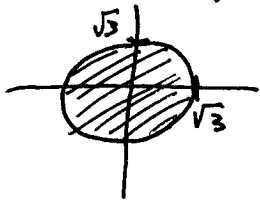
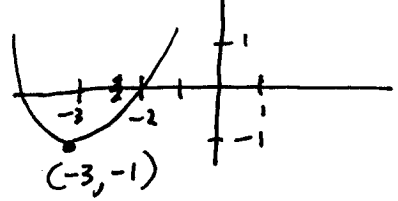


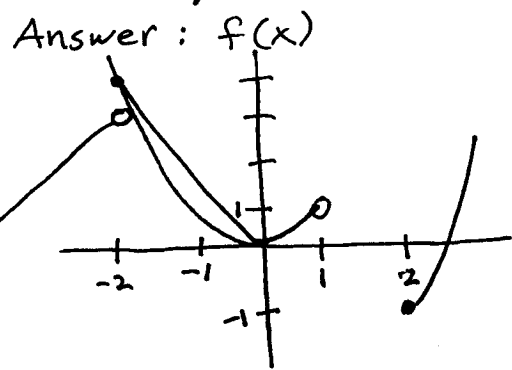
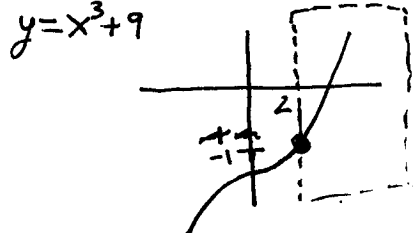
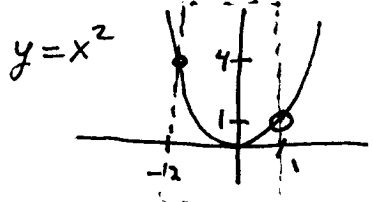
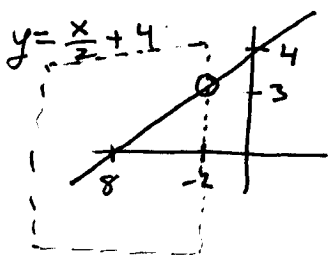
10h) $\{(x,y) \mid x^2 + y^2 \leq 3\}$



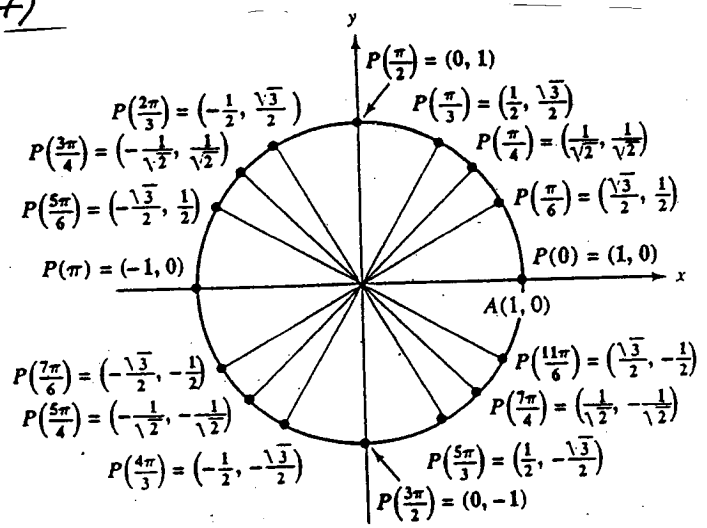
10i) $y = (x+3)^2 - 1$



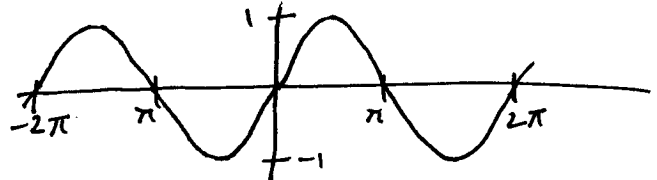
14)
$$f(x) = \begin{cases} \frac{x+4}{2} & \text{if } x < -2 \\ x^2 & \text{if } -2 \leq x < 1 \\ x^3 + 9 & \text{if } x \geq 1 \end{cases}$$



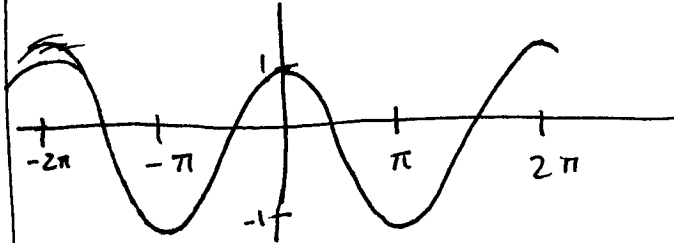
17)



27) $\sin \theta$



$\cos \theta$



$\tan \theta$

