



CALIFORNIA STATE UNIVERSITY  
STANISLAUS

Common Management System (CMS)

# **Student Administration**

**Faculty Advisory Workgroup Session**

February 6, 2008



CALIFORNIA STATE UNIVERSITY  
STANISLAUS

Common Management System (CMS)

Thank You!



# Agenda

- Introductions
- Project Background
- Project - Current Status
- Student Administration Project
- What does this mean to you?
- Faculty Advisory Workgroup - Partnership
- Demo – Faculty Center
- Overview – Academic Advising/Degree Audit
- Opportunities for Business Process Improvements
- Next steps
- Questions



# Background

## ➤ What is CMS?

- Began in 1998
- The Common Management Systems (CMS) is an initiative that involves all 23 CSU campuses and the implementation of PeopleSoft/Oracle Human Resources, Financials, and Student Administration software.

## ➤ Objective:

- Provide efficient, effective, high quality service to students, faculty, and staff.
- Campus implementations must be complete by Fall 2008.

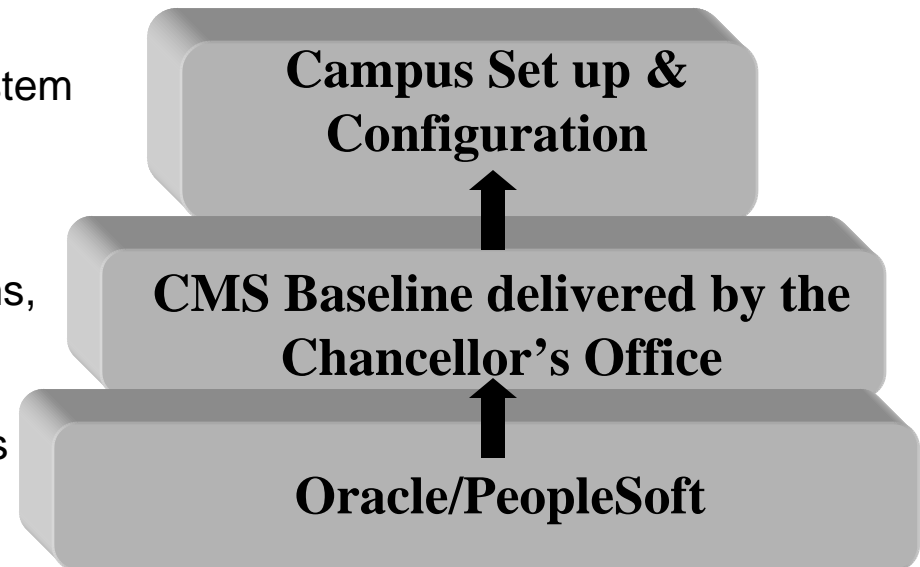
## ➤ Implementation Approach:

- Implementation in two phases (waves)
  - First wave: 11 campuses
  - Second wave: 12 campuses
    - CSU Stanislaus is part of wave 2



## ➤ What are the Benefits of CMS?

- Integrated software suite based on Oracle/PeopleSoft applications
- Campus collaboration throughout CSU system
- Common baseline software
- Single maintenance organization
- Single data center
  - Common hardware, operating systems, database software
  - Campuses have separate databases
- Flexibility in meeting unique campus needs
- Sharing of administrative best practices
- Expanded Web-based self service





## CMS - CSU Implementation Status

As of Fall 2007:

- All twenty-three (23) campuses are live with Human Resources application;
- Twenty-two (22) campuses are live with Financial application + CO; and
- Fourteen (14) are live with Student Administration, 7 in process of implementation to meet the Fall 2008 deadline.

Deployment Status	2001	2002	2003	2004	2005	2006	2007	2008
HR Baseline	11 campuses live			23 campuses live			24 campuses live	
Finance Baseline	11 campuses live			22 campuses live			24 campuses live	
Student Administration Baseline	5 campuses live			10 campuses live			23 campuses live	

Note: 24 for HR and Finance includes the Chancellor's Office



## CMS – CSU Related Initiatives

Following are a few examples of key initiatives that are extremely relevant to the CSU and the CMS project:

### **1) SCO 21<sup>st</sup> Century Project - New payroll system at the State Controller's Office (SCO):**

The State Controller's Office (SCO) is the pay agent for the California State University (CSU). Basically they generate the pay checks for all CSU employees. The current payroll system called PIMS is a very old system and there is an initiative in place to replace this system with a new payroll system. This initiative is referred to as the SCO 21st Century project. What this means is that all CSU campuses must be on the same Human Resources (HR) system in order to give relevant information to the SCO's payroll system to generate paychecks. The HR system is part of the CMS application set. To learn more about the SCO 21st Century Project, please use the link below.

SCO 21st Century Project:

[http://cms.calstate.edu/06\\_Projects-Initiatives/06A\\_HRPROJ\\_21stCentury/CMS\\_06A\\_00\\_HRPROJ\\_21Cent.asp](http://cms.calstate.edu/06_Projects-Initiatives/06A_HRPROJ_21stCentury/CMS_06A_00_HRPROJ_21Cent.asp)

### **2) Graduation Initiative:**

In 2003, the CSU Board of Trustees adopted a vigorous initiative to: (1) help students to matriculate as CSU freshmen well-prepared for university-level work; (2) enable students working on lower-division courses of study at California Community Colleges to follow optimal pathways in pursuing their undergraduate major; and (3) encourage and support students in following efficient pathways to the degree during their careers at CSU campuses. The Student Administration system is part of the CMS application set that will support parts of this initiative. To learn more about the Graduation Initiative, please use the link below.

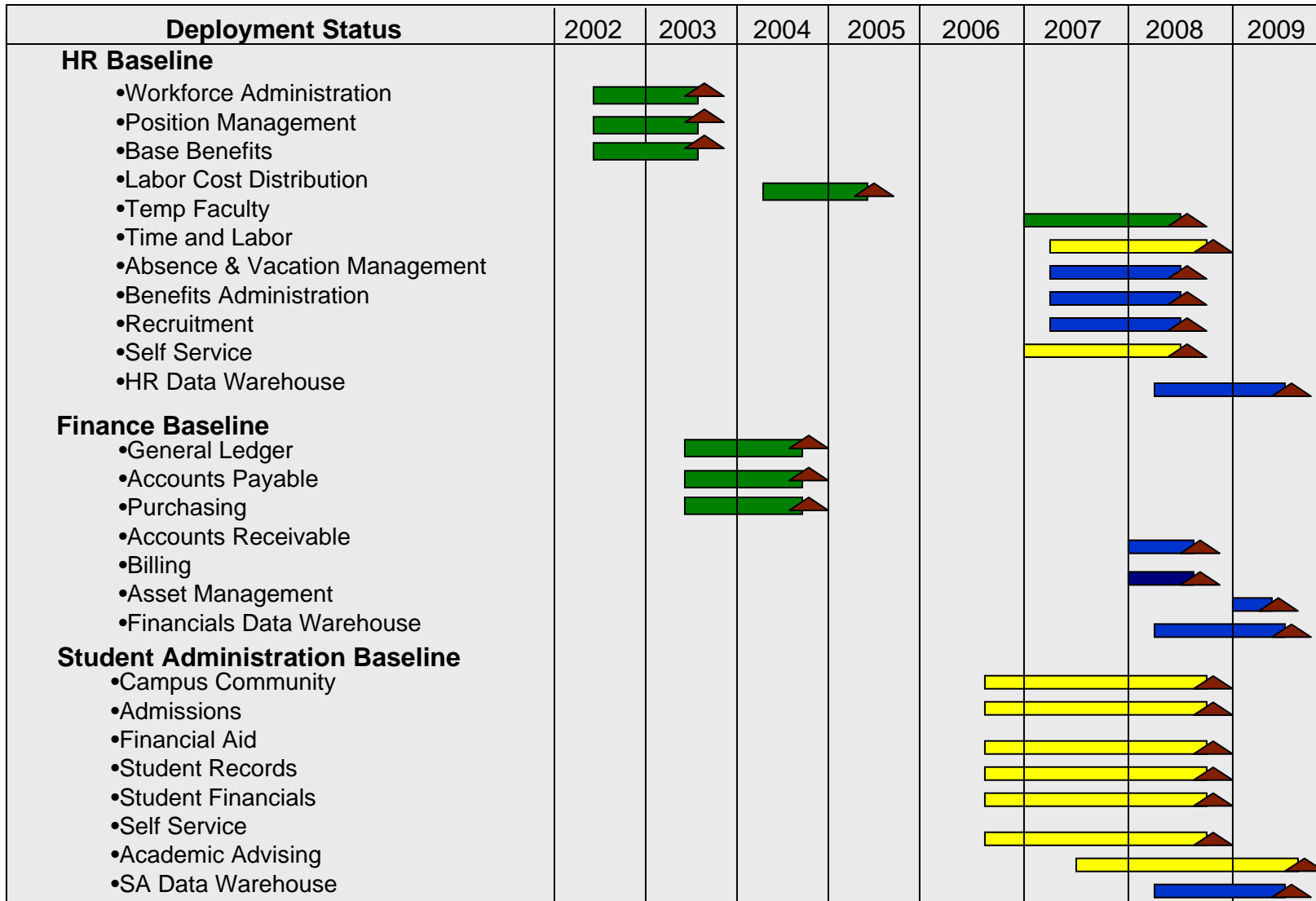
Graduation Initiative:

[http://cms.calstate.edu/06\\_Projects-Initiatives/06B\\_SAPROJ\\_FacGrad/CMS\\_06B\\_00\\_SAPROJ\\_FacGrad.asp](http://cms.calstate.edu/06_Projects-Initiatives/06B_SAPROJ_FacGrad/CMS_06B_00_SAPROJ_FacGrad.asp)

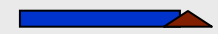


# CSU Stanislaus Implementation Status

CMS Projects



**SCO 21<sup>st</sup> Century Project** (State Controller's Office new payroll system)





## Student Administration (SA) Implementation

Five CSU campuses agreed to partner and collaborate for the implementation of the Oracle /PeopleSoft **Student Administration Module**



CSU Bakersfield



CSU Stanislaus



### Objectives and Benefits of the Collaborative are:

- Replace the existing Student SCT/Banner system with the CSU Oracle/PeopleSoft Student administration software
- Reduce risk associated with a single campus software implementation
- Reduce costs by leveraging campus resources through collaboration
- Share best practices
- Minimize duplication of efforts
- Teamwork



# Campus SA Project Organization

Campus CMS Steering Committee

Student Administration Project Management

SA Functional Management

CMS Project Director

SA Project Manager

Student Administration Project Implementation Team

Campus  
Community

Admission &  
Recruitment

Student Records  
&  
Catalog/Schedules

Financial  
Aid

Student  
Financials

Academic  
Advising /  
Evaluations

Reporting

Security

Technical

Campus Constituents

Faculty Advisory Workgroup

Students

Faculty

Business Users

Community



## Project Communications

- CMS Steering Committee
- Project charter
- Project plan and updates
- Project team meetings at various organizational levels
- Presentations and demonstrations
- Focus groups/advisory groups
- Project web site and newsletters
- Other opportunities to share project goal and status



[A-Z Directory](#) > [OIT](#) > [Common Management System](#)

## Welcome...

**What's the newest & greatest on our campus?**

Are you tired of filling out forms?? Do you want information at your fingertips?? Self-Service is just around the corner!

### Soon you will be able to do these online:

- View and update information yourself such as your address, phone number, etc.
- Apply to the University, check your application status, and enroll in classes online

### Need training? Our new training calendar is available:

- Check out the courses and dates available
- Register online now

PeopleSoft **Log-in**

### CMS Information

[Acronyms & Definitions.pdf](#)  
[Questions & Answers.pdf](#)

### CMS Resources

#### System Access:

[Information Access Request Form.pdf](#)

#### System:

[Maintenance Notification Project Status.pdf](#)

#### Training:

[Campus Community Professional Development.ppt](#)

#### CSU:

[CMS Central](#)   
[CMS Related Projects](#)   
[21st Century Project](#)

**CMS Home**

**Application Documentation**

**Application: Human Resources**

**Application: Student Administration**

**Application: Finance**

**Self Service**

**Contact Information**



## High Level – SA Go Live Schedule/Timeline

### Phased Implementation

Module	Timeline
■ Admit Students	October 2007 For Fall '08
■ Process Financial Aid	February 2008
■ Process Enrollments	Spring 2008
■ Tuition Calculation/Process Payments	Spring/Summer 2008
■ Process Degree Audit <ul style="list-style-type: none"><li>• Transfer credit articulation</li><li>• Academic Advising</li></ul>	Fall 2008 and later



## Application Benefits

Following are a few of the new application benefits:

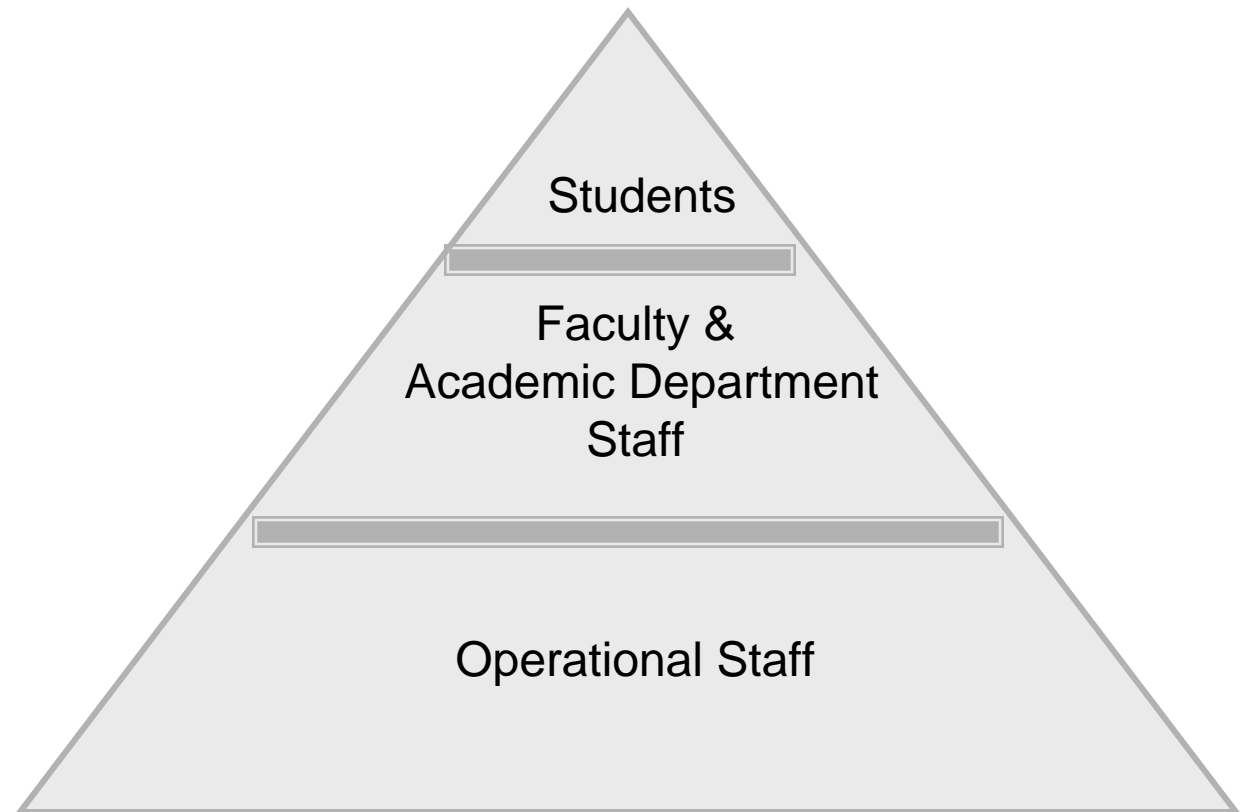
- Extensive Self Service Functionality for:
  - Students
  - Faculty
  - Staff
  
- Streamlined processes through new technical capabilities (more automation) and appropriate business process changes for best practices
  
- Enhanced automated processes for tracking and reporting required by the Chancellor's Office (i.e. English & Math remediation tracking)
  
- New functionality:
  - Transfer credit articulation at detail level
  - Academic Advising/degree audit
  
- Functionality to support the Graduation initiative proposed by the CSU Board of Trustees



## What Does This Mean To You?

The new application will have a different level of impact to the various campus audience:

- Learning curve
- New terminology
- Training
- Possible changes in business practices





## Faculty Advisory Workgroup

### **Partnership!**

As part of the SA implementation, partner & work with us to make this a win-win in the following areas:

- Identify key current processes conducted by faculty members as they relate to administrative tasks and opportunities for improvements, efficiencies, automation, etc. This includes application usage as well as forms, reports, etc.;
- Partner with us in conducting reviews/testing (system and process) and provide input to ensure we are optimizing and taking advantage of potential functionality and technology;
- Guide us for identifying best approaches and tools in introducing the new system functionality/processes to faculty colleagues; and
- Other



## Next steps

- Testing:
  - Faculty Center (April timeframe)
  
- Opportunity to improve business processes, forms, etc.
  - Current
  - Future
  
- Training:
  - Approach
  - Tools
  
- Other



*Coming together is a beginning,  
Keeping together is progress,  
Working together is success!*

By Henry Ford