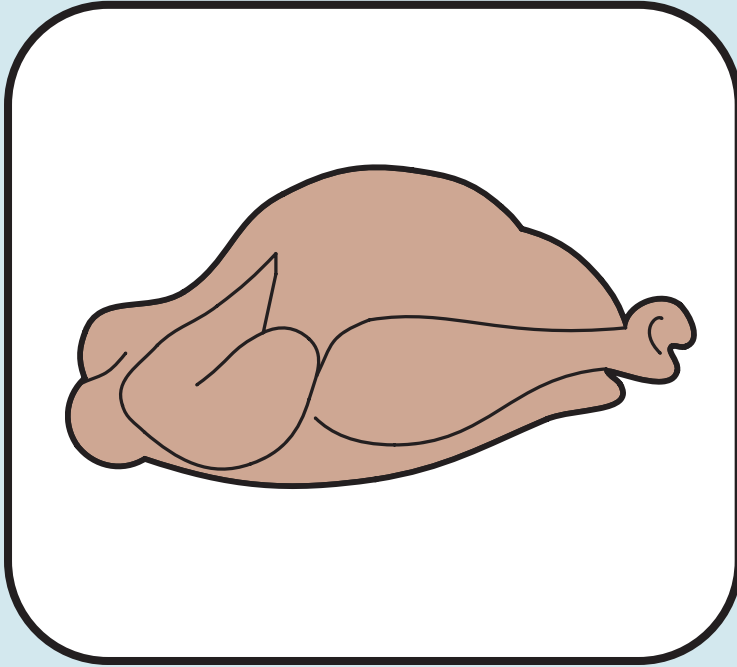


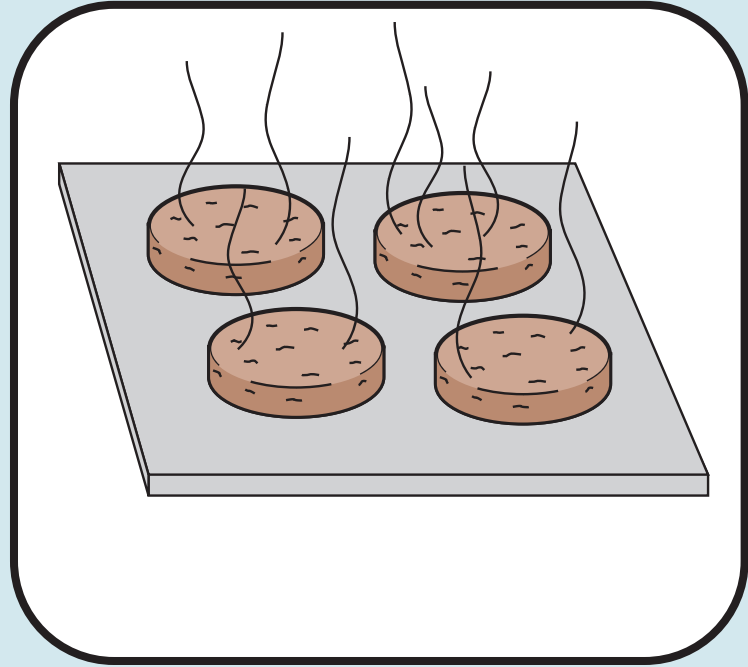
# MINIMUM INTERNAL COOKING TEMPERATURES

## WHOLE AND GROUND POULTRY



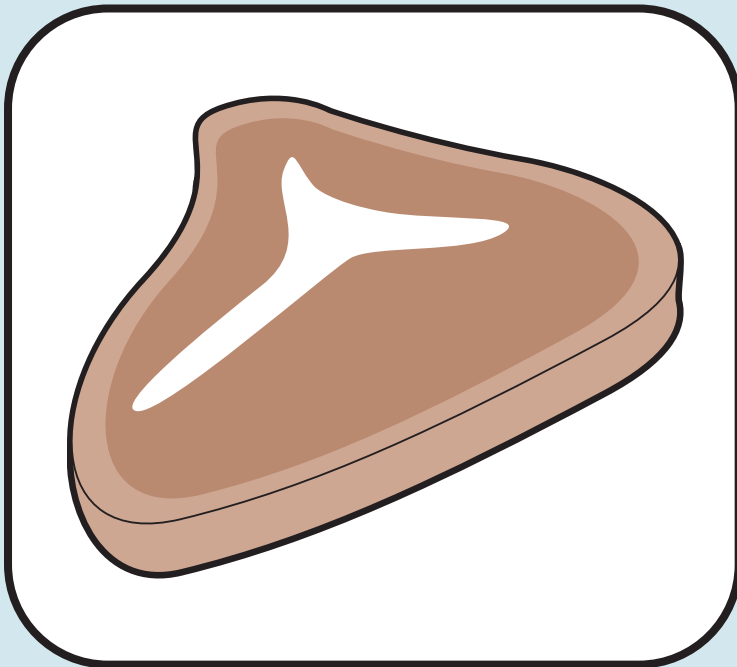
Cook to  
165°F (74°C) for  
15 seconds

## GROUND MEATS AND FISH



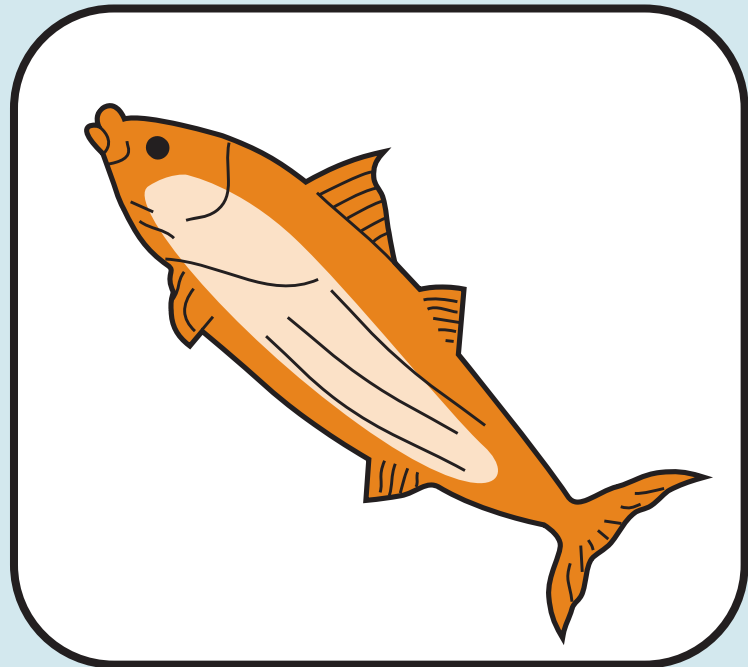
Cook to  
155°F (68°C) for  
15 seconds

## PORK AND BEEF



Cook to  
145°F (63°C) for  
15 seconds

## FISH



Cook to  
145°F (63°C) for  
15 seconds

