

Graduate School

Admission Information Checklist:

New and Returning Graduate Applicants

Send the following items to the Graduate School:

1. Online Admission Application
2. Official Transcripts
3. DD214 or DD295 – Veterans Only
(Veterans' educational benefits)

Students with Secondary or Collegiate Education Outside of the United States:

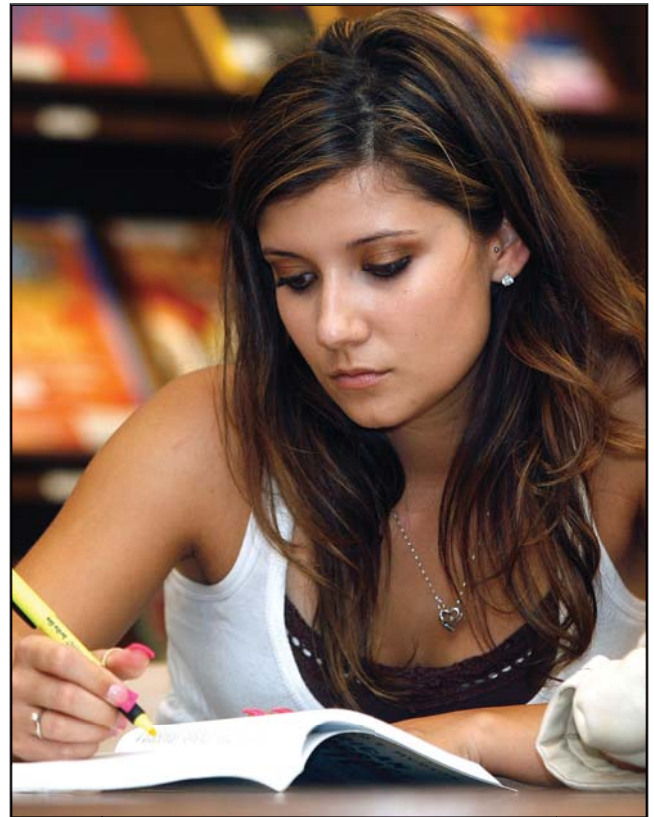
1. Proof of California Residency
2. Test Of English as a Foreign Language (TOEFL)
3. Evaluation of Academic Credentials

Send the following items to your Program:

Not all items are required by each program; to determine your specific program's requirements go to the Graduate School website and select your program:

<http://www.csustan.edu/Grad/>

1. Program Admission Application
2. Test Scores (GMAT, GRE, MAT, etc.)
3. Letters of Recommendation
4. Personal Statement
5. Other



Admission Checklist for Graduate Applicants

We want to help you in the admission process every step of the way. The process for getting into CSU Stanislaus consists of completing and submitting the following items for university and program admission:

- 1. Online Admission Application** - Submit an online admissions application for Graduate School admissions: www.csumentor.edu
There is a \$55 non-refundable application fee that must be paid before your application will be processed.
- 2. Official Transcripts**
 - a. If you **are** a CSU Stanislaus graduate **and have not attended elsewhere** since your graduation, the Graduate School **does not need** an additional copy of your transcripts for admission.
 - b. If you **are not** a CSU Stanislaus graduate, or are a graduate who has attended elsewhere since your graduation, please submit the following:
 - i. **One official transcript from ALL colleges you have attended or are attending.** *Official* refers to transcripts that are submitted to the Graduate School in a sealed envelope. Your transcripts must indicate degrees earned.
- 3. Educational Benefits for Military Veterans** - A copy of your DD214 or DD295 is required if you desire Veterans' educational benefits.

Students with Secondary or Collegiate Education Outside of the United States

- 1. Proof of California residency is required if born outside the United States** - if issued an Alien Registration Card, please submit a photocopy of both sides.
- 2. Test Of English as a Foreign Language (TOEFL) requirement**
 - a. All graduate and post baccalaureate applicants, regardless of citizenship, whose native language is not English and whose preparatory education was principally in a language other than English, must demonstrate competence in English. Those who do not possess a bachelor's degree from a postsecondary institution where English is the principal language of instruction must receive a minimum 550 total score and 54 part score on the Test of English as a Foreign Language (TOEFL). Some programs require a higher score. Applicants taking the Computer-Based TOEFL must present a 213 total score and 21 part score or above. Applicants taking the Internet-Based TOEFL must present a 79 total score and minimum part scores of 20 Reading, 19 Listening, 16 Writing. The International English Language Testing System (IELTS) will substitute for TOEFL, with a minimum Band score of 6.5. Some programs may require a higher score.
- 3. Evaluation of Academic Credentials** - All students with coursework from countries other than the United States need to seek an outside determination of course work and degree equivalency to U.S. standards. Follow the instructions contained in the International Graduate Student Applicant Checklist.



www.csustan.edu/grad

Program Admission

In addition to Graduate School admission, program admission is required to pursue a graduate degree or post baccalaureate credential. Many programs employ a referral system and students must be admitted to the program before they will be admitted to the Graduate School. In this case students should apply concurrently to the program and the Graduate School. Program admissions are competitive and many have specific application deadlines. Some programs have one admission date per year. For these reasons and to ensure full consideration, students are encouraged to apply to the program as early as possible. All master's degree and credential program applicants may also be required to provide additional transcripts and test scores to their graduate program department or the Credentials Office.

To determine your specific program's requirements go to the Graduate School website and select your program:

<http://www.csustan.edu/Grad/>

If you have any further questions or concerns regarding the items you need to submit to your program, please contact the Program Coordinator. Contact information can be found at: www.csustan.edu/Grad/programcontacts

Contact Information

CSU Stanislaus
Graduate School
One University Circle
Turlock, CA 95382
(209) 667-3129 phone
(209) 664-7025 fax
email to: Graduate_School@csustan.edu